

# **Section 9:**

# **Municipal**

# **Improvement District**

**This page left intentionally blank**

***Municipal Improvement District***

***BETHEL ISLAND MUNICIPAL IMPROVEMENT DISTRICT***

*(Bethel Island Municipal Improvement District Act, 1960 State Legislature First Extraordinary Session, Chapter 22)*

<u>Location of office</u>	3085 Stone Road, Bethel Island
<u>Mailing address</u>	P.O. Box 244
	Bethel Island, CA 94511
<u>Telephone numbers</u>	(925) 684-2210
<u>FAX number</u>	(925) 684-0724
<u>Web page</u>	<a href="http://www.bimid.com">www.bimid.com</a>
<u>E-mail address</u>	<a href="mailto:respinoza@bimid.com">respinoza@bimid.com</a>

**BOARD OF DIRECTORS**

Five members elected at large for four-year terms

Meetings: 2<sup>nd</sup> Thursday of each month

<u>District Board Members</u>	<u>Began serving</u>	<u>Expiration of term</u>
Tom Knorr, Jr., President	2020	12/2028
Anthony Berzinas, Vice President	2016	12/2028
Lisa Kirk, Secretary	2016	12/2028
Vignesh Rama, Treasurer	2022	12/2026
Bruce Smith, Board Member	2014	12/2026

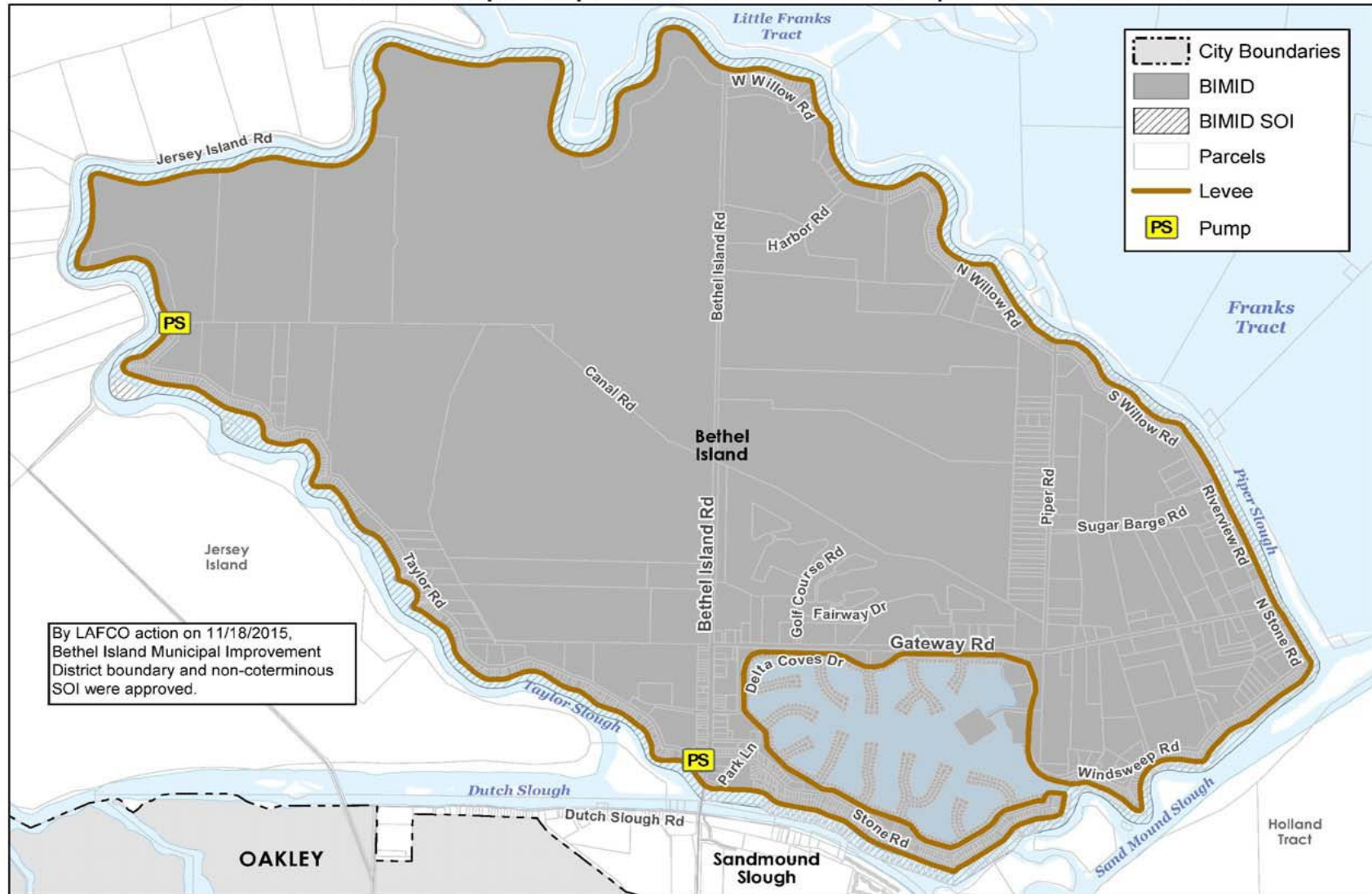
**STAFF**

Regina Espinoza	District Manager
Denece Bixby	District Clerk
Dave Larsen	Legal Counsel

**INFORMATION**

<u>Year Formed:</u>	1960
<u>Area Served:</u>	Bethel Island
<u>Population Served:</u>	2,130 per the 2020 census, the population nearly doubles during the summer months due to recreational activities.
<u>Registered Voters:</u>	1,320 as of May 2025
<u>Size:</u>	5.47 square miles
<u>Services provided:</u>	Levee maintenance, drainage maintenance

## Bethel Island Municipal Improvement District and Sphere of Influence



Map created 11/02/2015  
by Contra Costa County Department of  
Conservation and Development, GIS Group  
30 Main Road, Martinez, CA 94553  
37.59 41.791N 122.07 03.756W

This map or dataset was created by the Contra Costa County Department of Conservation and Development with data from the Contra Costa County GIS Program. Some base data, primarily City Limits, is derived from the CA State Board of Equalization's tax rate areas. While obligated to use this data the County assumes no responsibility for its accuracy. This map contains copyrighted information and may not be altered. It may be reproduced in its current state if the source is cited. Users of this map agree to read and accept the County of Contra Costa disclaimer of liability for geographic information.

0 2,000 4,000 8,000 Feet

Exhibit A

