

Section 2:

Cemetery Districts

This page left intentionally blank

Cemetery District

ALAMO-LAFAYETTE CEMETERY DISTRICT

(Health and Safety Code §9000 et seq.)

Location 3285 Mt. Diablo Blvd, Lafayette 94549
130 El Portal, Danville 94526
Mailing address P.O. Box 1955
Lafayette, CA 94549-1955
Telephone numbers (925) 284-1353
FAX number (925) 284-4144
Web page <https://www.alamolafayettecemetery.com/>
E-mail address dm@alcdist.org

BOARD OF DIRECTORS

3 members appointed by Board of Supervisors for four-year terms

Meetings: 2nd Monday of each month, 1:00 PM

<u>District Board Members</u>	<u>Began serving</u>	<u>Expiration of term</u>
Nancy J. Flood	2006	11/2023
Mary McCosker	2014	09/2026
Carolyn Thiessen	2009	01/2025

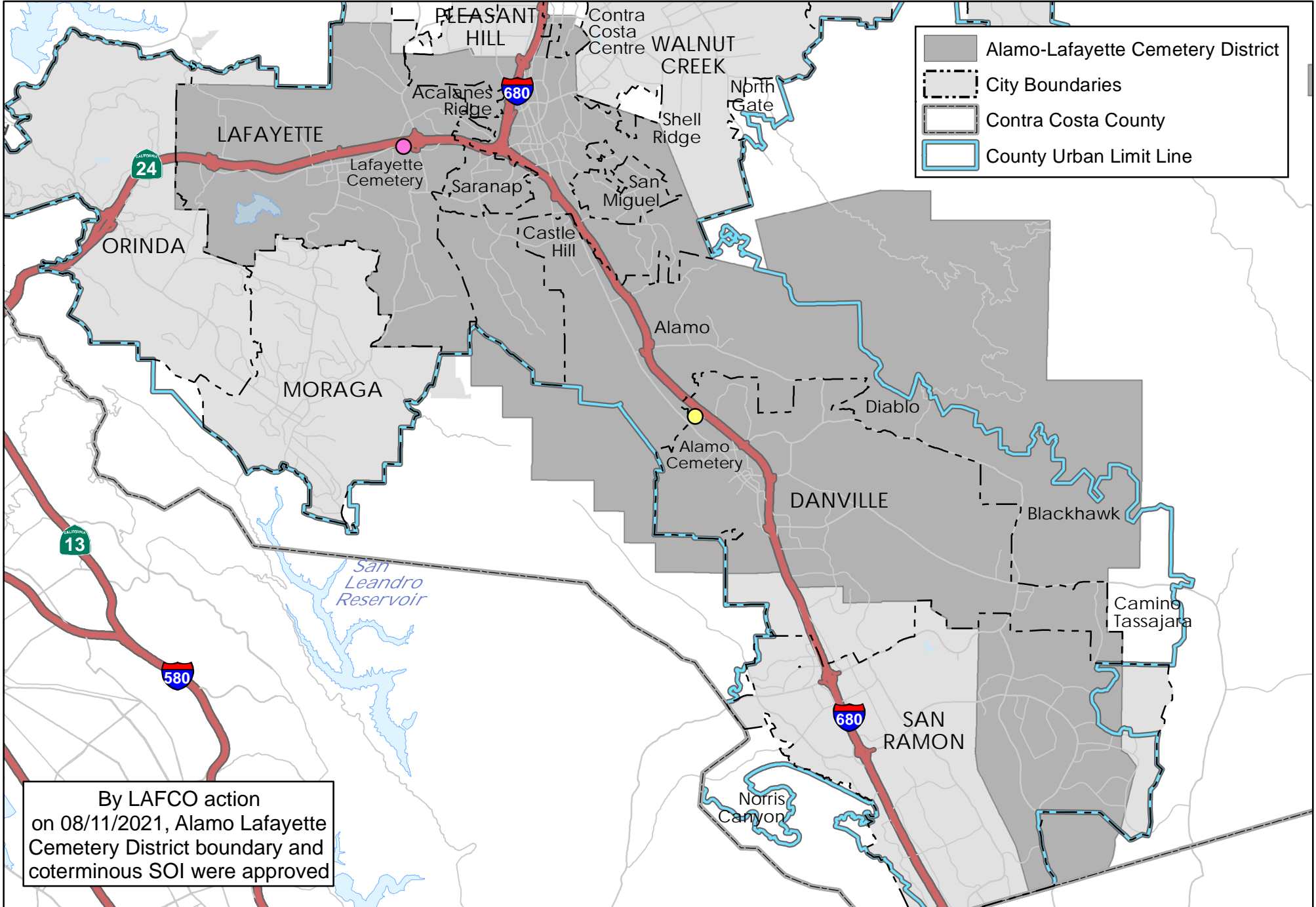
STAFF

Patricia Howard	District Manager
Emz Rich	District Assistant

INFORMATION

Year of First Burial: 1854
Year of Formation: 1937
Area Served: Alamo, Blackhawk, Danville, Diablo, Lafayette, Rossmoor and portions of Walnut Creek and San Ramon
Population Served: 172,424 per CCC Dept. of Conservation & Development
Size: 84.09 square miles
Services provided: Interments, graves maintenance, record upkeep

Alamo-Lafayette Cemetery District and Coterminous SOI



By LAFCO action on 08/11/2021, Alamo Lafayette Cemetery District boundary and coterminous SOI were approved



Cemetery District

BYRON-BRENTWOOD-KNIGHTSEN UNION CEMETERY DISTRICT
(B-B-K Union Cemetery District)
(Health and Safety Code §9000 et seq.)

Location of office 11545 Brentwood Boulevard, Brentwood
Mailing address P.O. Box 551
Brentwood, CA 94513
Telephone numbers (925) 634-4748
FAX number (925) 634-9783
Web page <https://www.bbku.cd.org/>
E-mail address dm@bbku.cd.org

BOARD OF TRUSTEES

Appointed by Board of Supervisors for four-year terms of office
Terms run from January 1 to December 31 four years later

Meetings: Third Wednesday at 3:00 PM, at District office

<u>District Board Members</u>	<u>Began serving</u>	<u>Expiration of term</u>
Patricia Bristow, Chair	2014	12/2026
Emil Geddes	2022	10/2026
Michael Walko	2022	12/2022

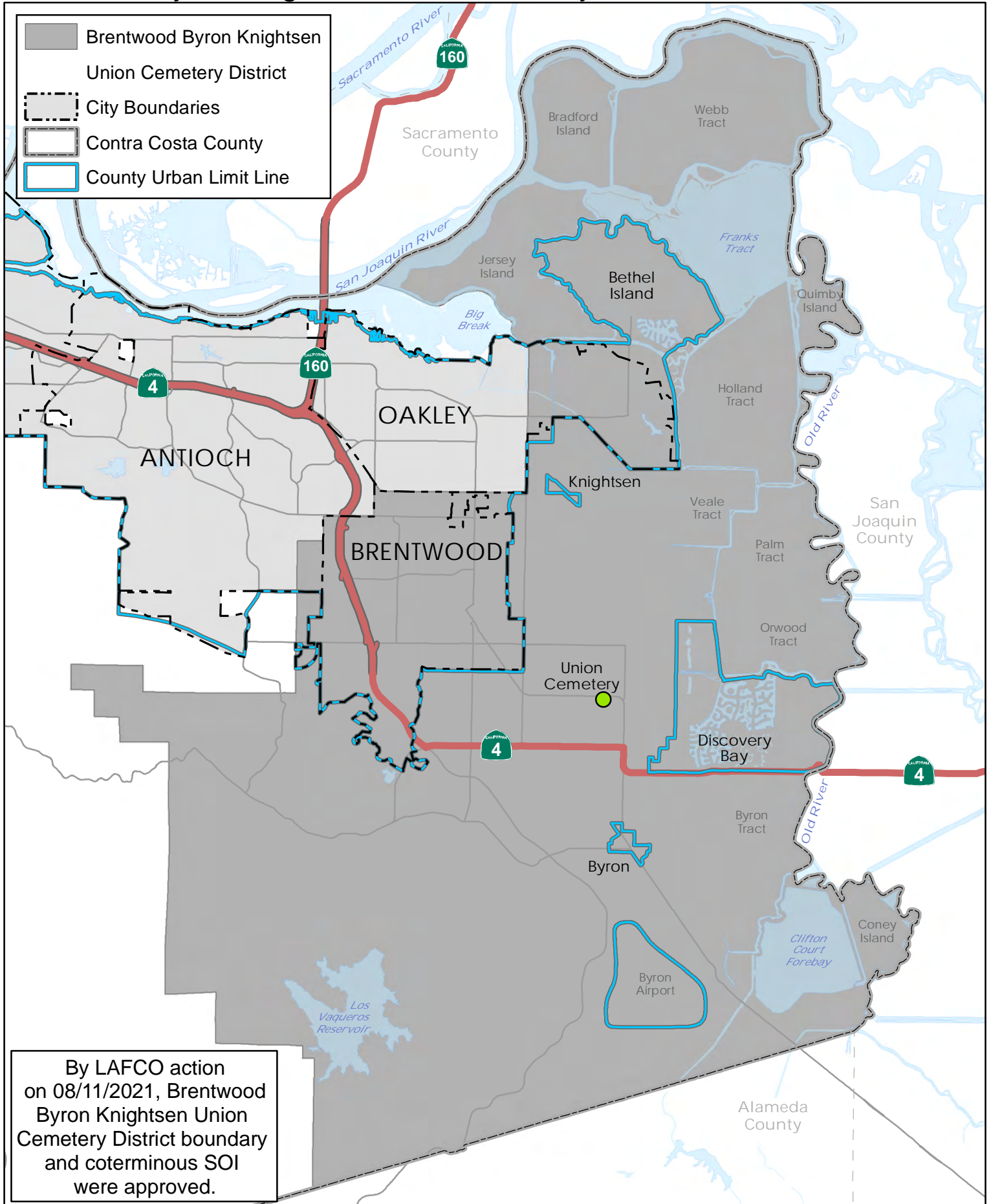
STAFF

Patricia Howard	District Manager
Aurora Garcia	Cemetery Services Coordinator
Mai Garcia	District Assistant
Ian Rambarran, Klinedinst Attorneys	Legal Counsel

INFORMATION

Year of First Burial: 1878; (Oldest Headstone 1867 from Previous Burial)
Year of Formation: 1928
Area Served: Byron, Brentwood, Knightsen, Discovery Bay, Bethel Island, eastern most parts of Morgan Territory. Bordered by San Joaquin County, Alameda County, and Sacramento County.
Population Served: 90,953 per CCC Dept. of Conservation & Development
Size: District includes far east Contra Costa County (Byron, Brentwood, Knightsen, Discovery Bay, Bethel Island, part of Oakley, Morgan Territory, Delta islands) and serves 202.57 square miles
Services provided: Interments; maintaining grounds, structures and open space

Brentwood Byron Knightsen Union Cemetery District and Coterminous SOI



By LAFCO action on 08/11/2021, Brentwood Byron Knightsen Union Cemetery District boundary and coterminous SOI were approved.