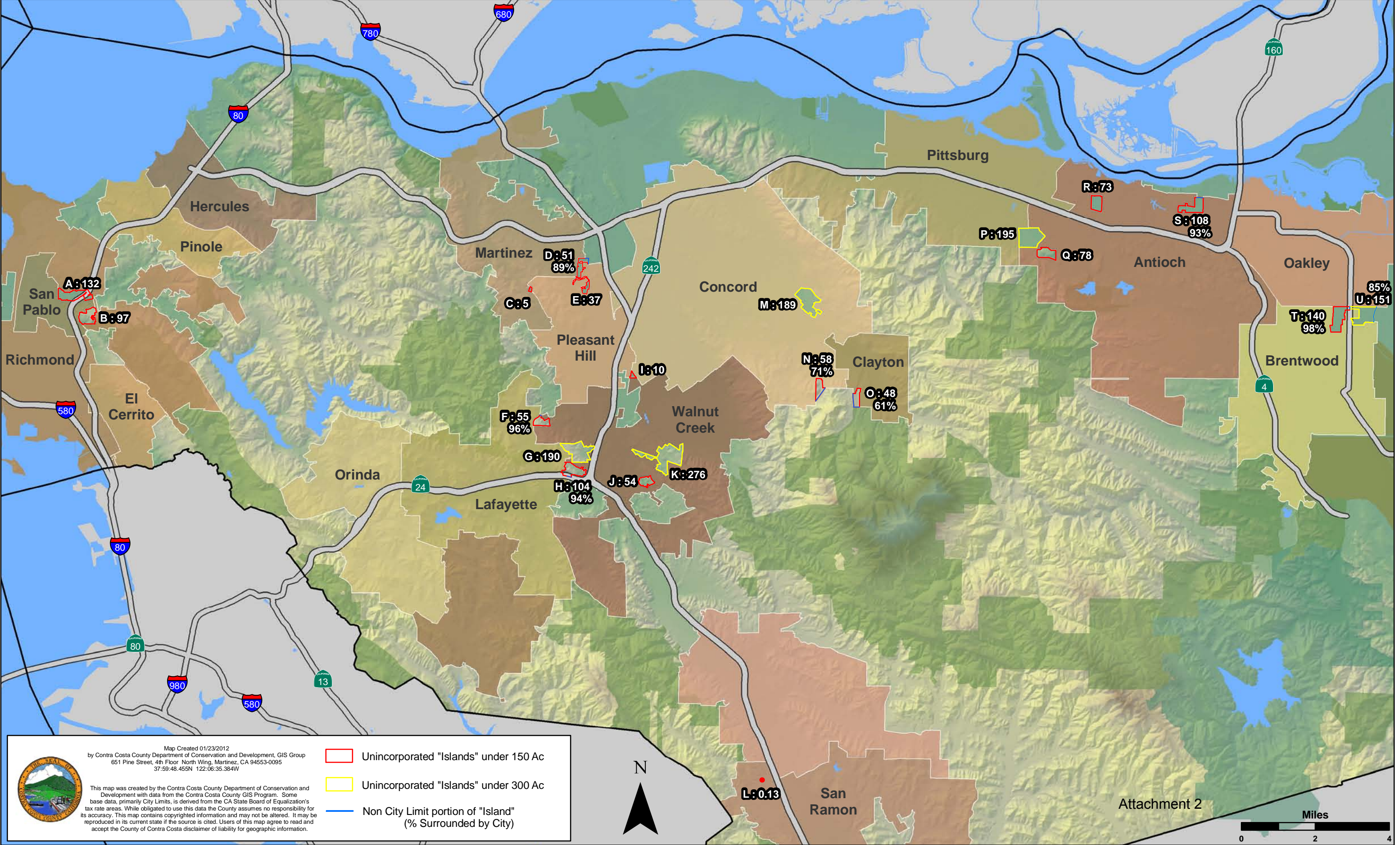


# Unincorporated "Islands" under 300 Acres in Contra Costa County



Map Created 01/23/2012  
by Contra Costa County Department of Conservation and Development, GIS Group  
651 Pine Street, 4th Floor North Wing, Martinez, CA 94553-0095  
37:59:48.455N 122:06:35.384W

This map was created by the Contra Costa County Department of Conservation and Development with data from the Contra Costa County GIS Program. Some base data, primarily City Limits, is derived from the CA State Board of Equalization's tax rate areas. While obligated to use this data the County assumes no responsibility for its accuracy. This map contains copyrighted information and may not be altered. It may be reproduced in its current state if the source is cited. Users of this map agree to read and accept the County of Contra Costa disclaimer of liability for geographic information.



Attachment 2

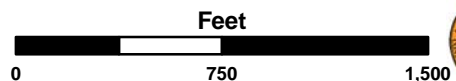
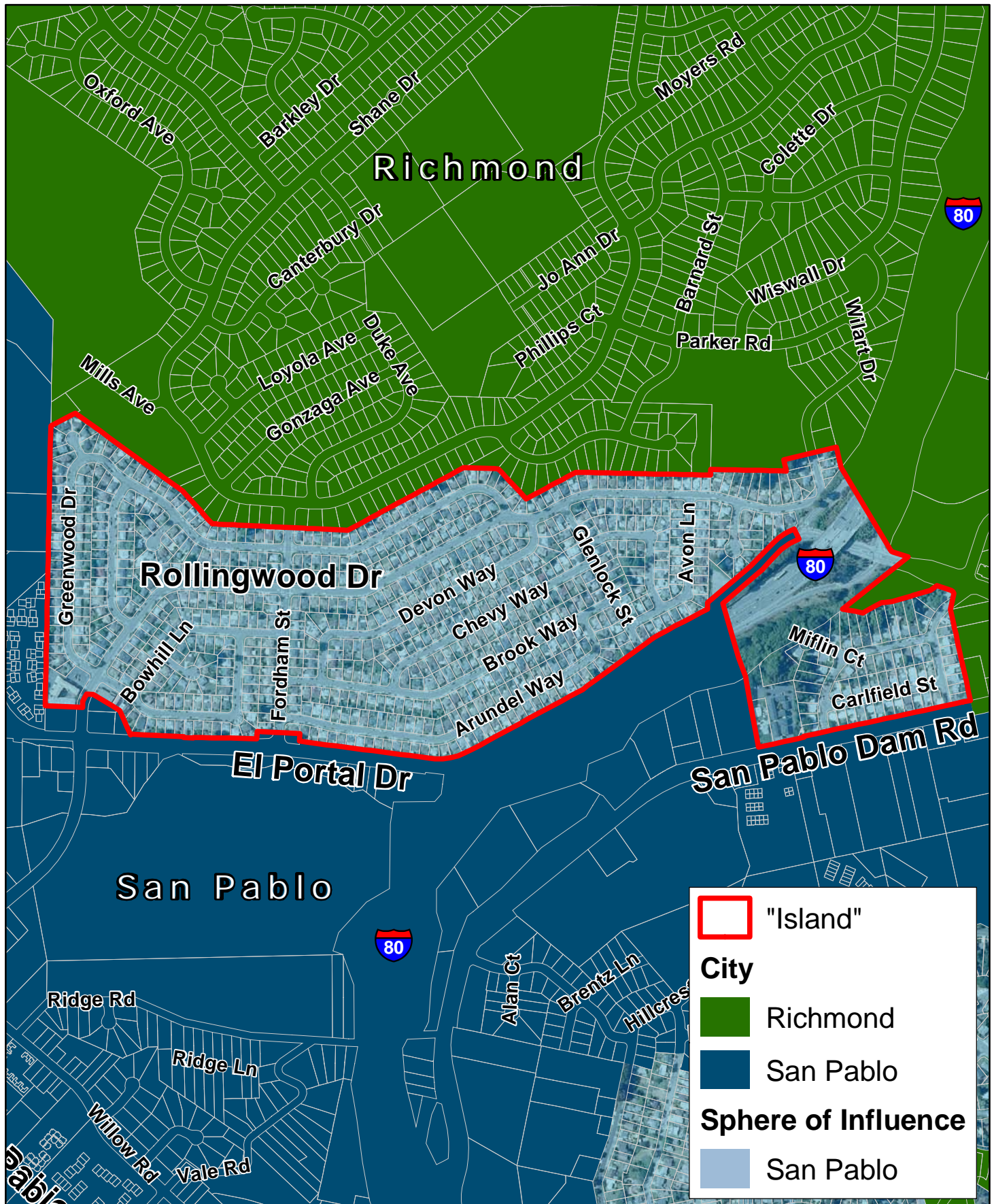


# Unincorporated "Islands" in Contra Costa County

132 Acres  
100 % Surrounded

Agenda Item 7a  
Uninc. Islands Maps

A

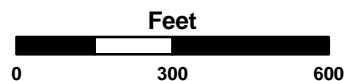
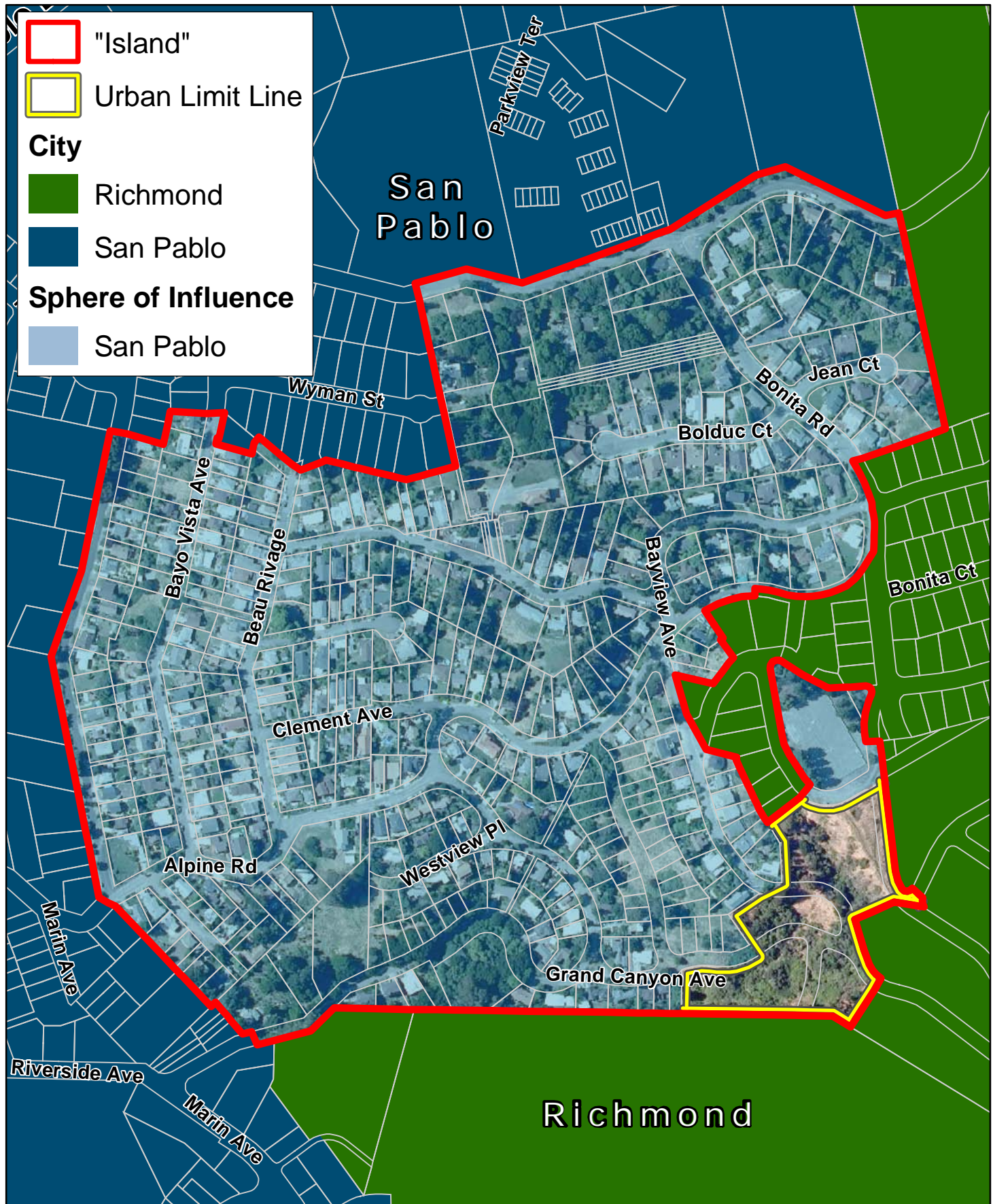




# Unincorporated "Islands" in Contra Costa County

97 Acres  
100 % Surrounded

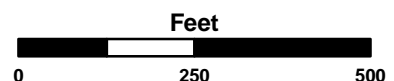
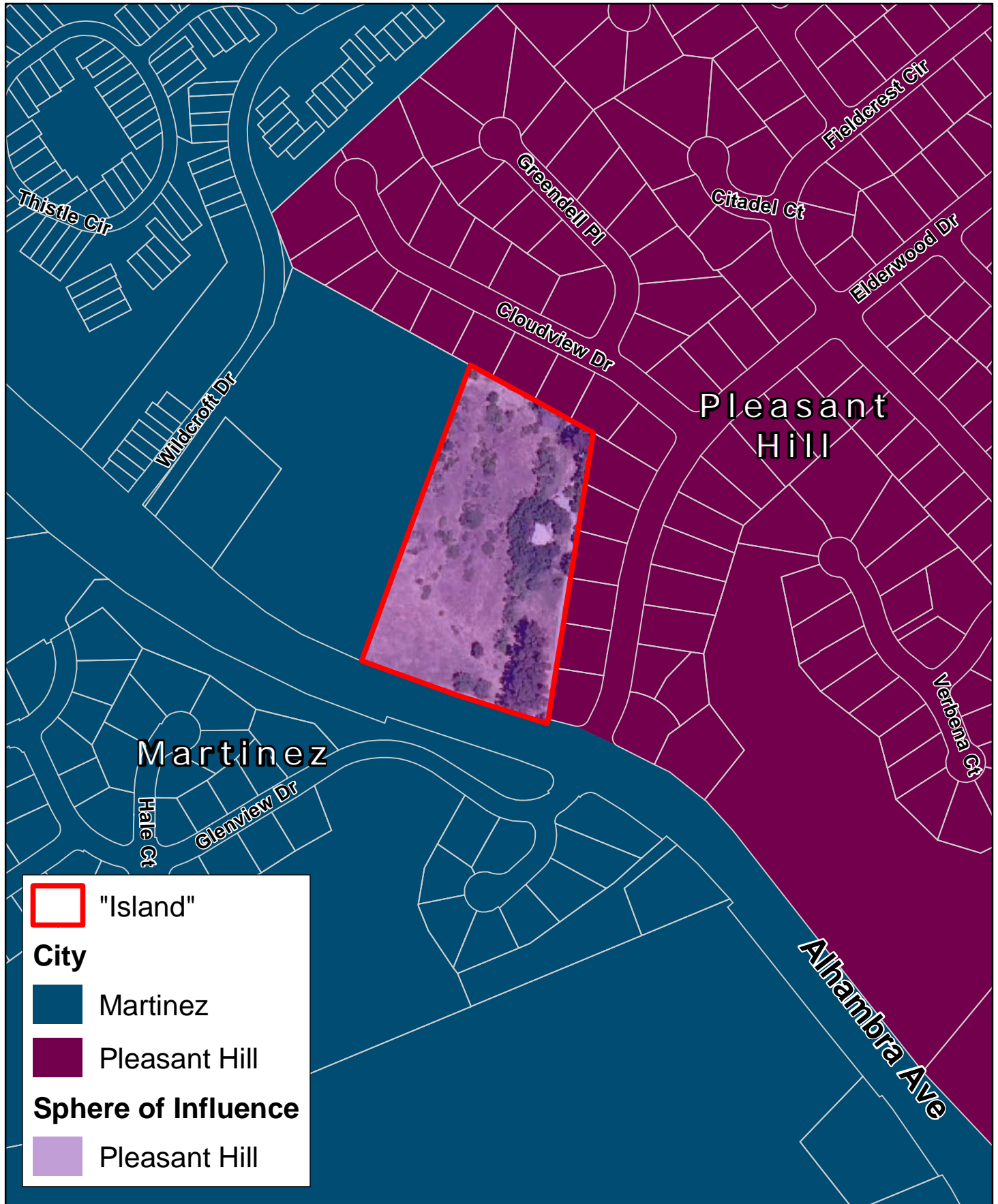
**B**



# Unincorporated "Islands" in Contra Costa County

5 Acres  
100 % Surrounded

C

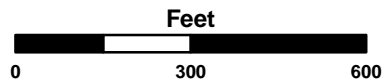
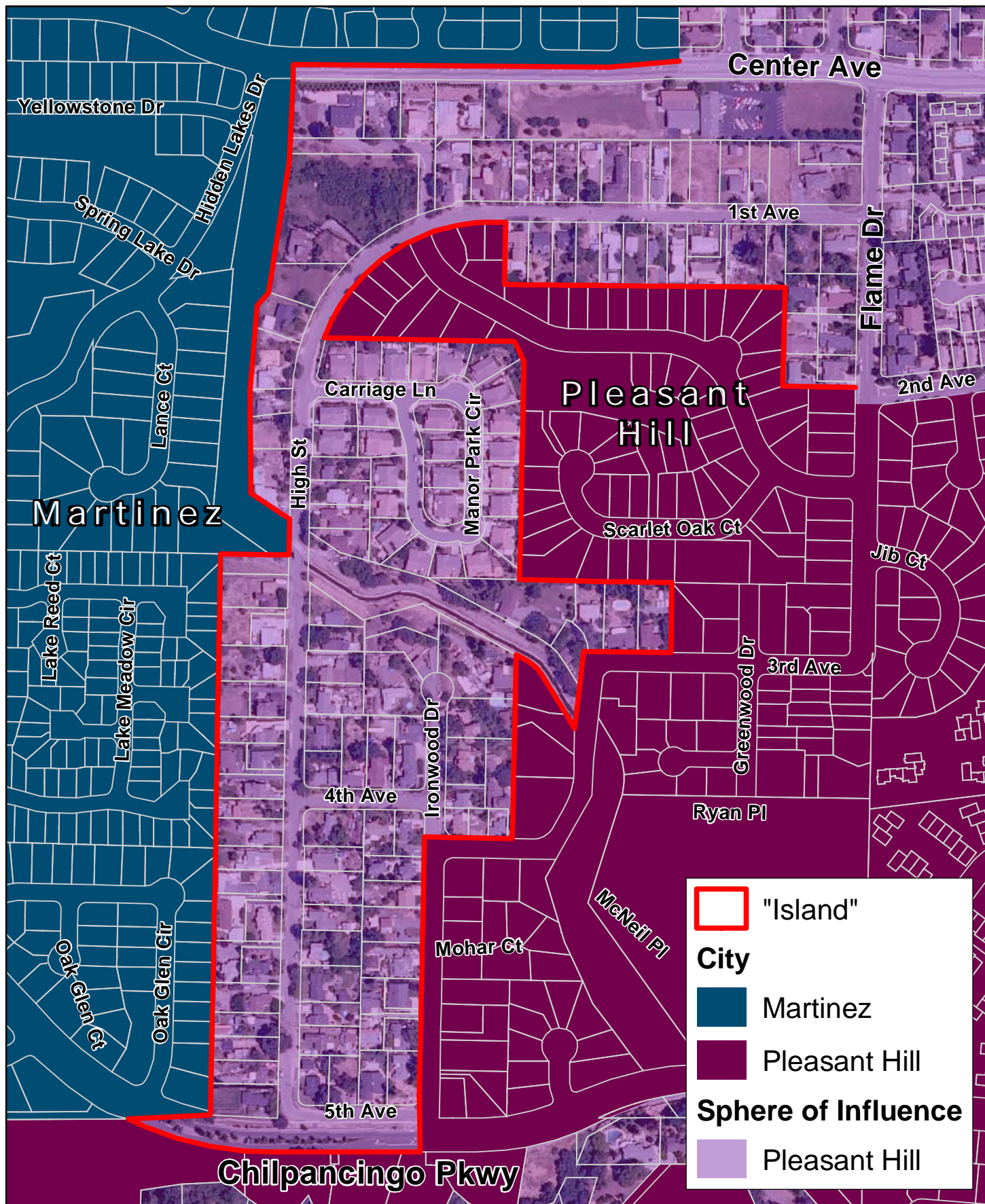




# Unincorporated "Islands" in Contra Costa County

51 Acres  
89 % Surrounded

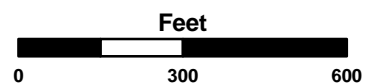
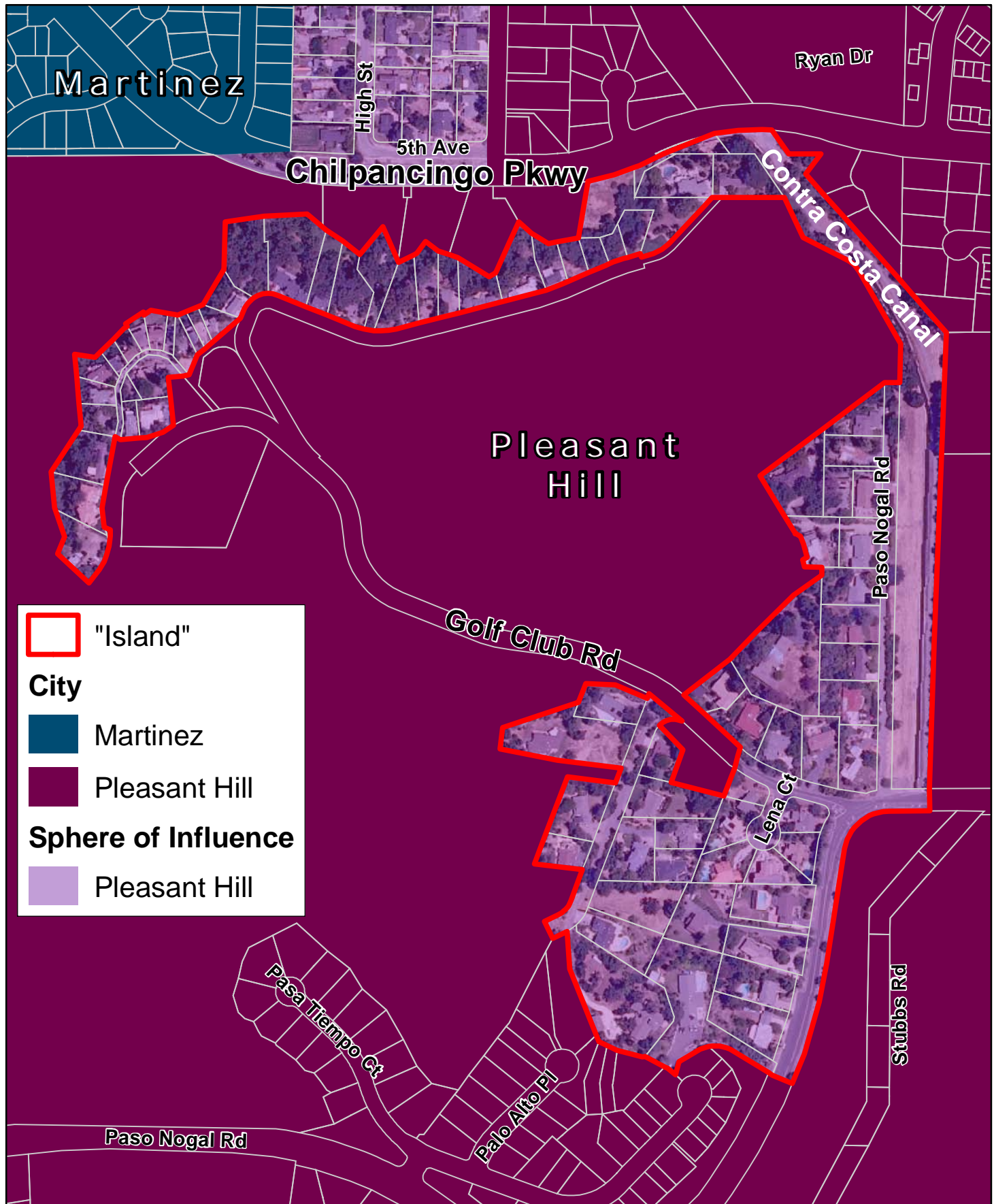
D



# Unincorporated "Islands" in Contra Costa County

37 Acres  
100 % Surrounded

E

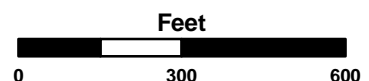
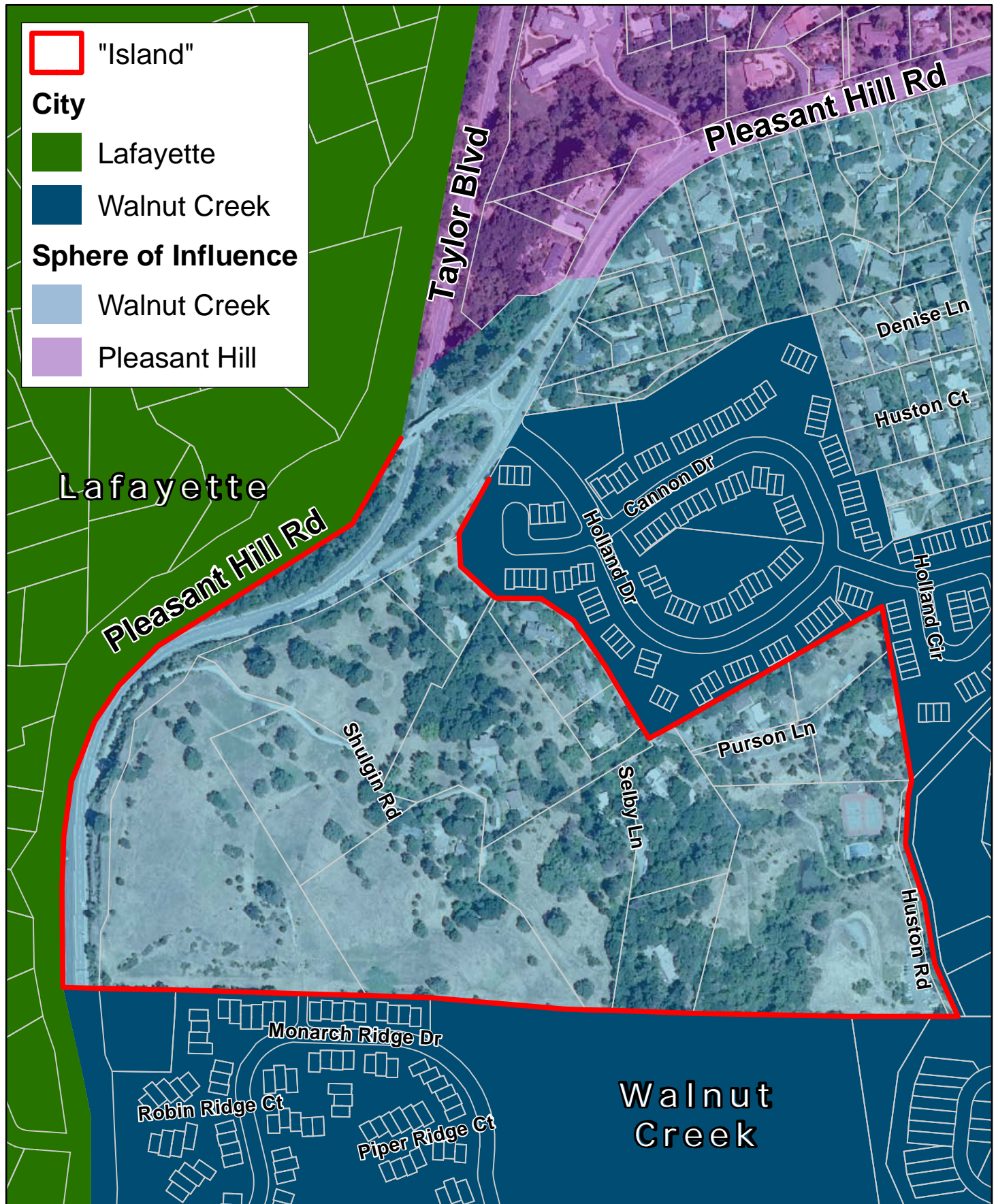




# Unincorporated "Islands" in Contra Costa County

55 Acres  
96 % Surrounded

F

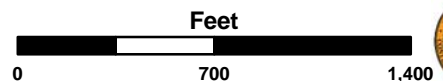
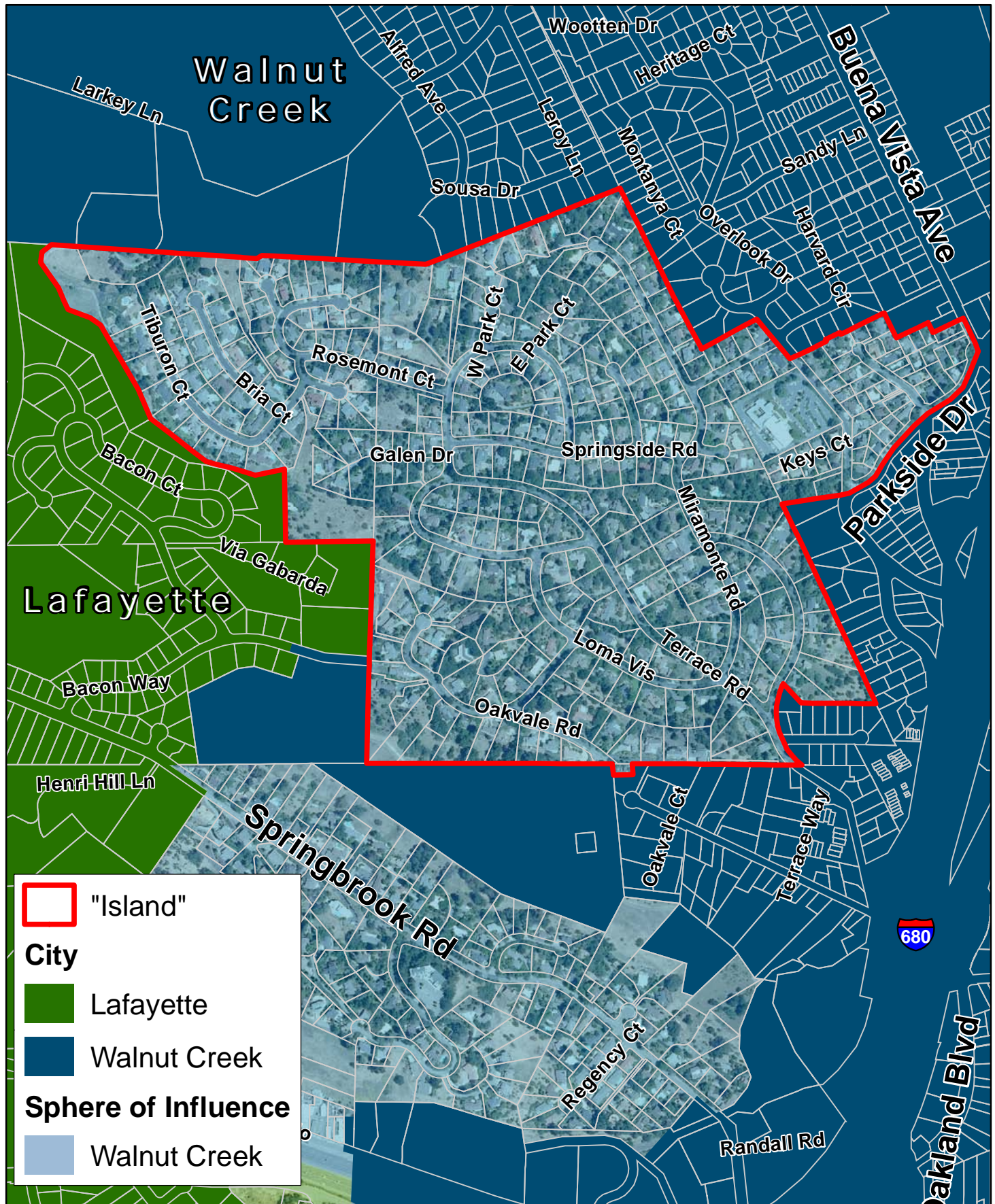




# Unincorporated "Islands" in Contra Costa County

190 Acres  
100 % Surrounded

G

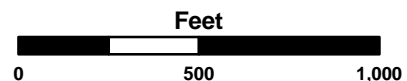
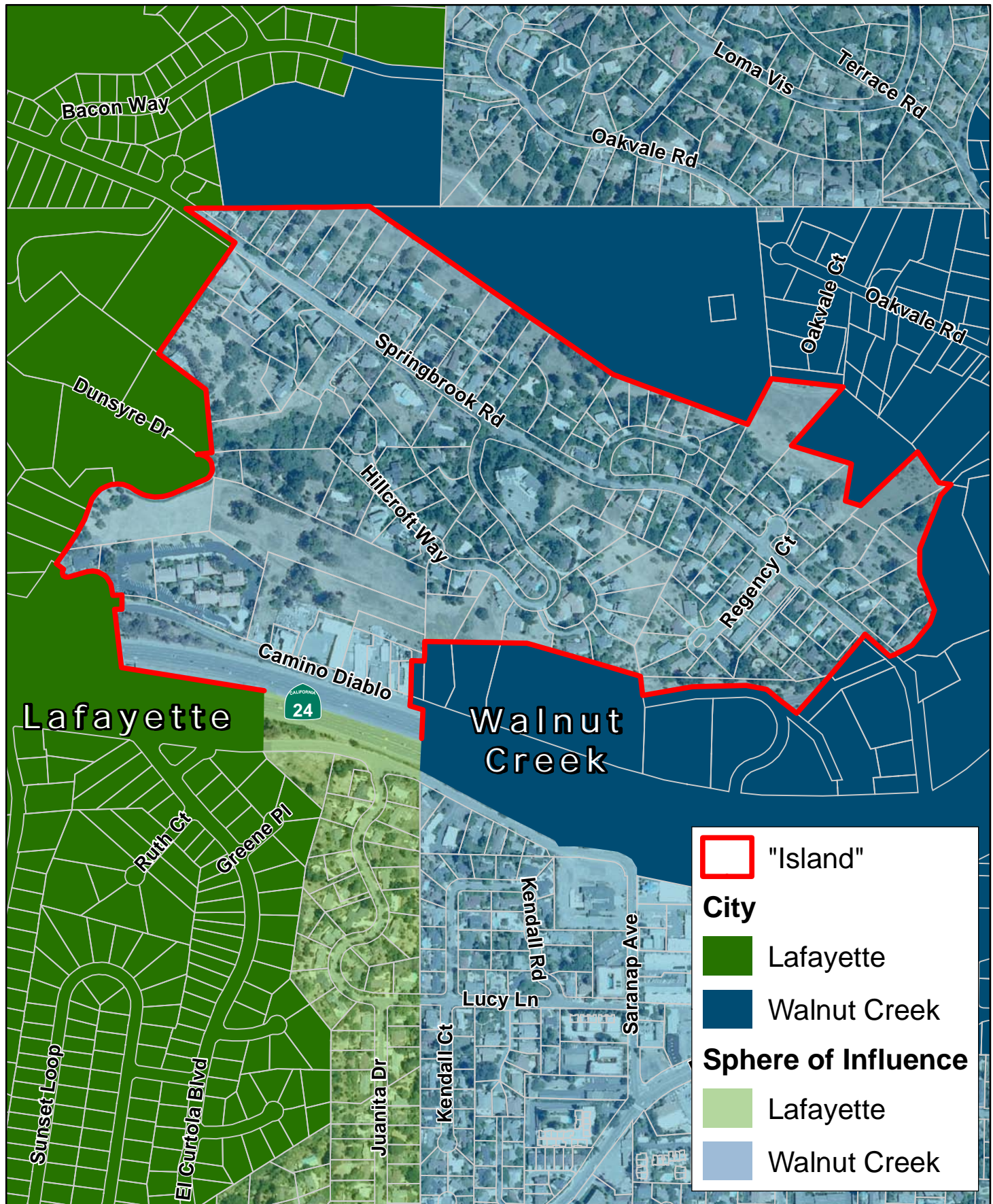




# Unincorporated "Islands" in Contra Costa County

104 Acres  
94 % Surrounded

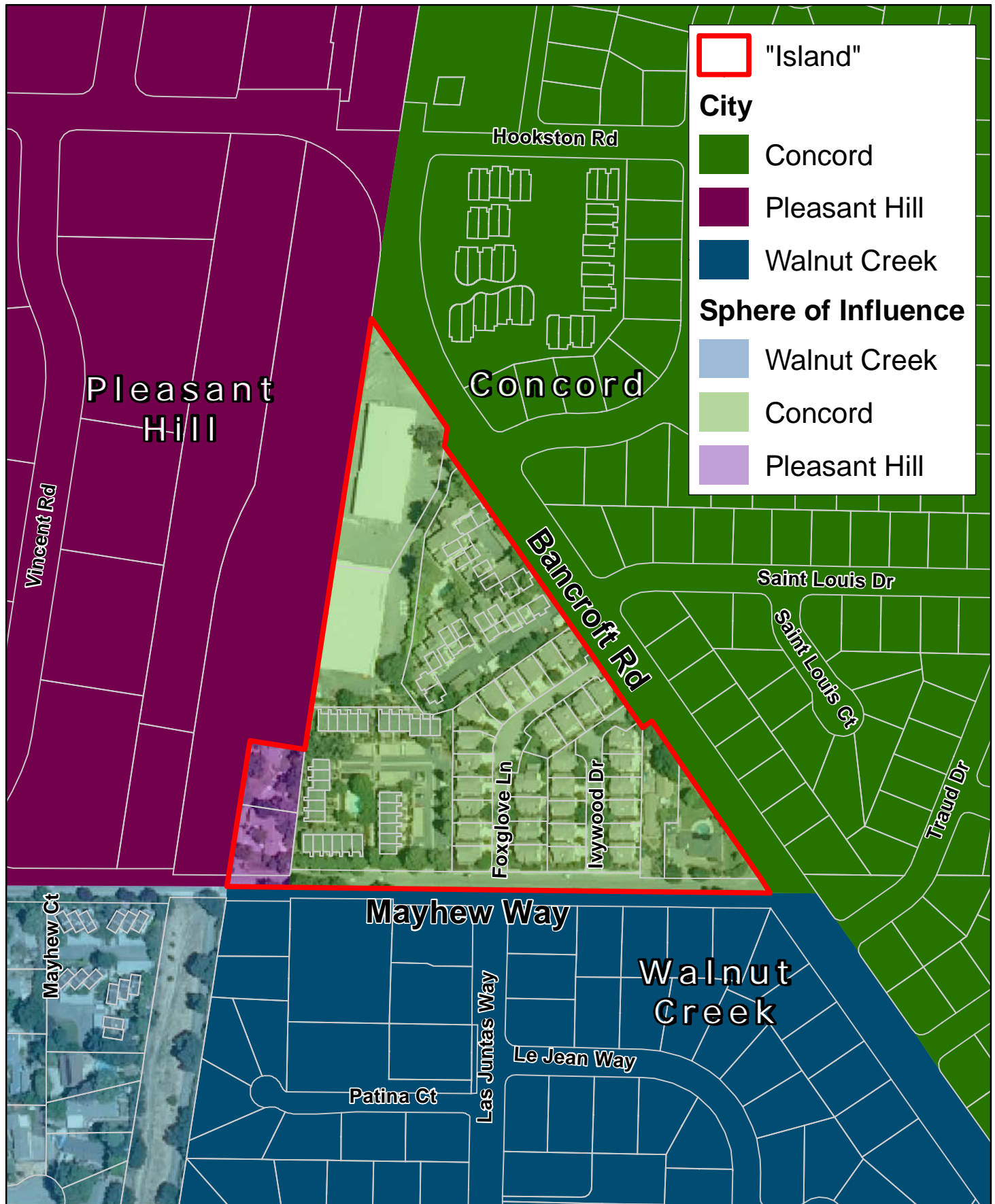
H





# Unincorporated "Islands" in Contra Costa County

10 Acres  
100 % Surrounded

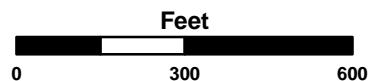
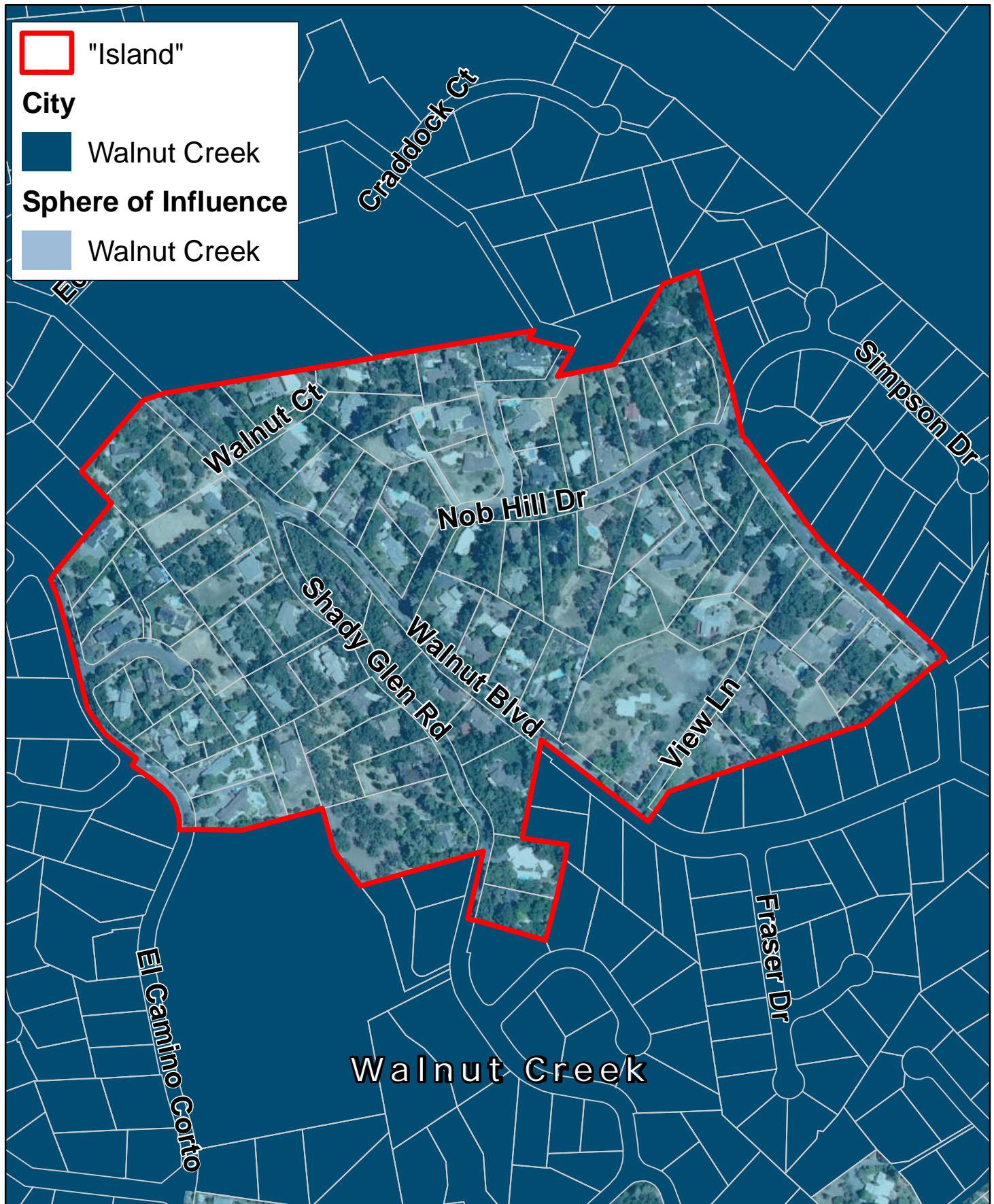




# Unincorporated "Islands" in Contra Costa County

54 Acres  
100 % Surrounded

J

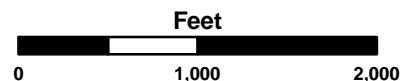
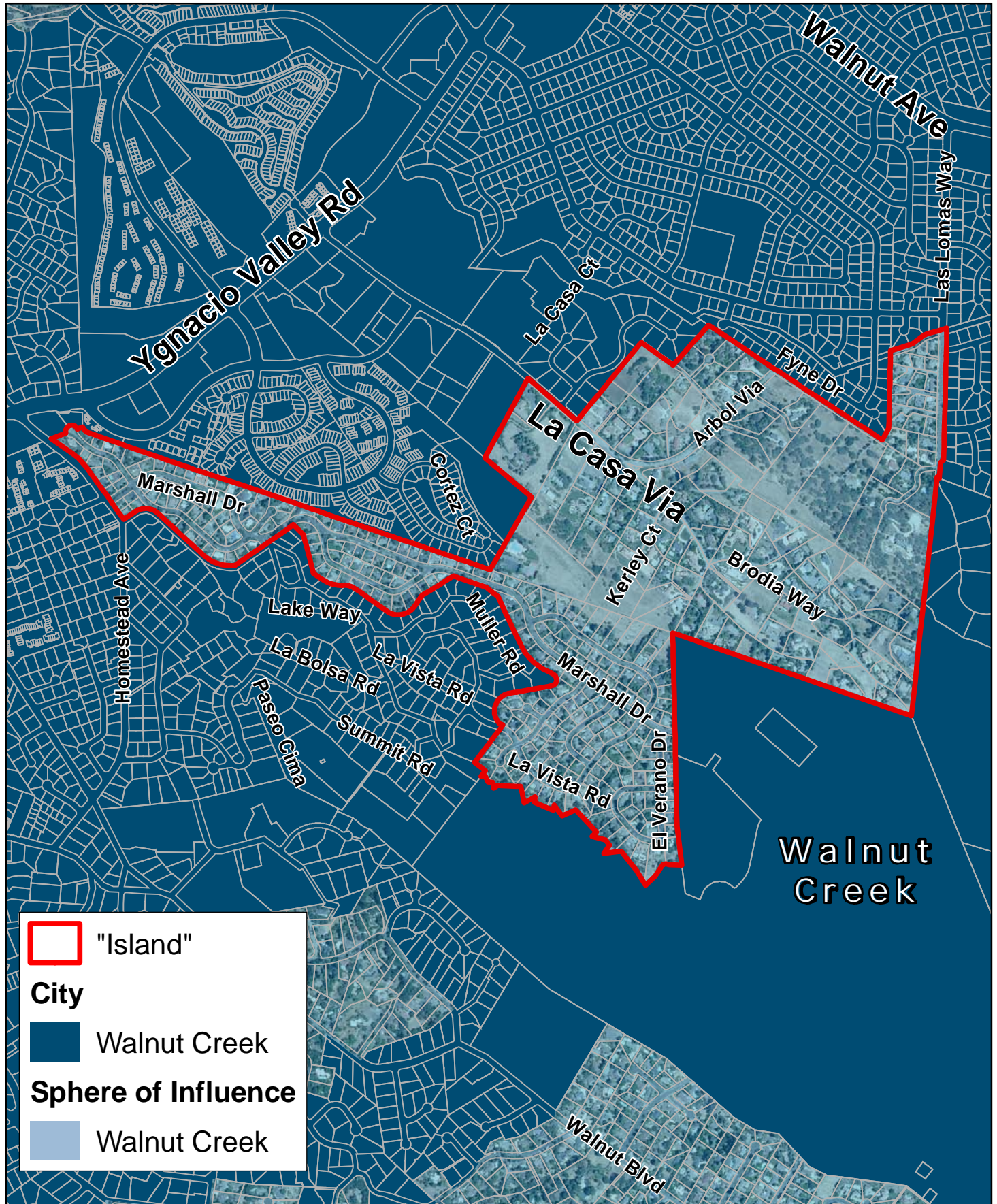




# Unincorporated "Islands" in Contra Costa County

276 Acres  
100 % Surrounded

K

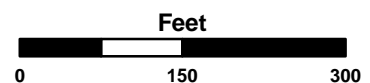




# Unincorporated "Islands" in Contra Costa County

0.13 Acres  
100 % Surrounded

L

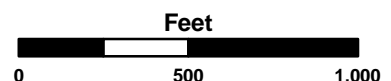
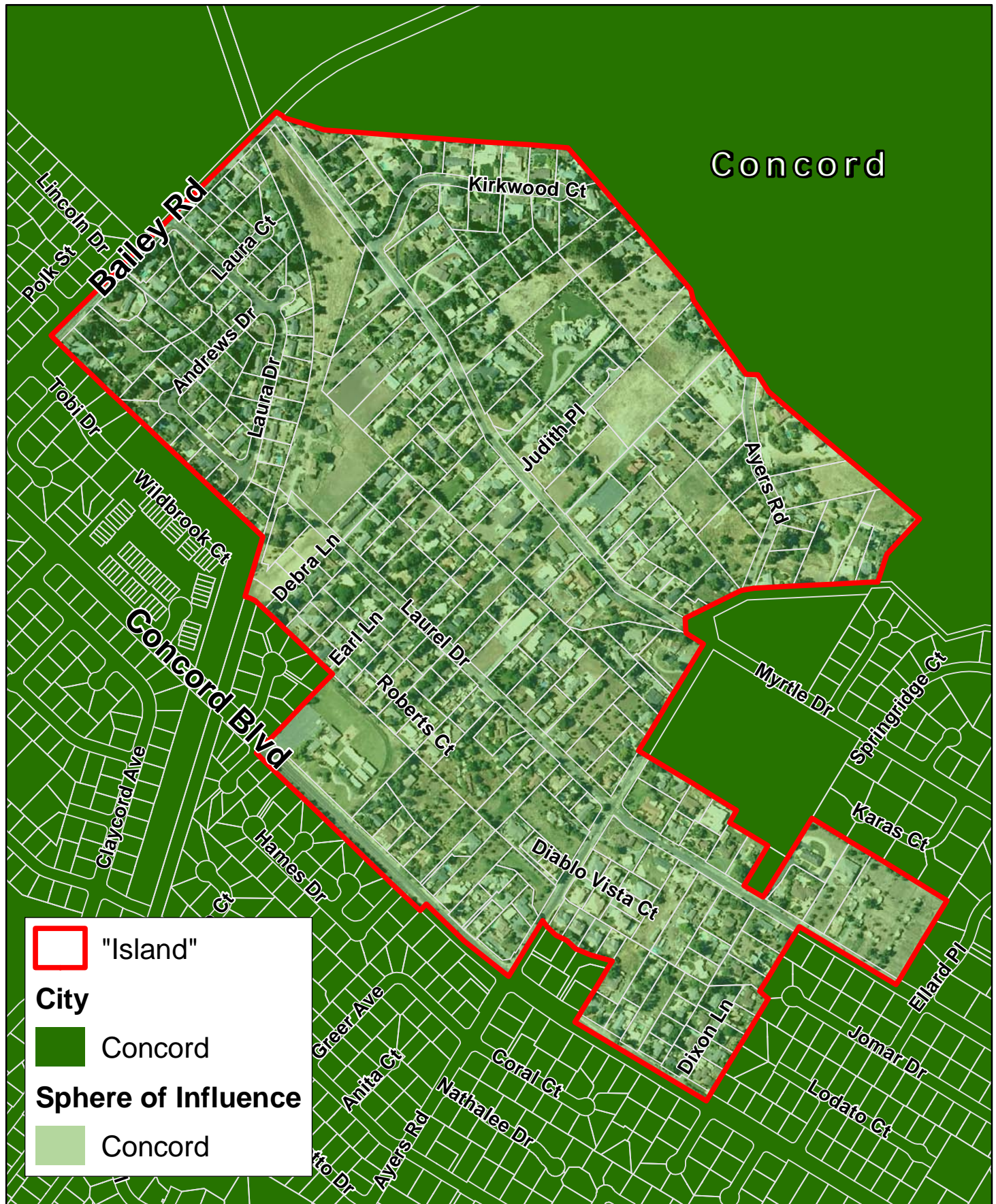




# Unincorporated "Islands" in Contra Costa County

189 Acres  
100 % Surrounded

M

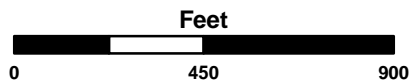
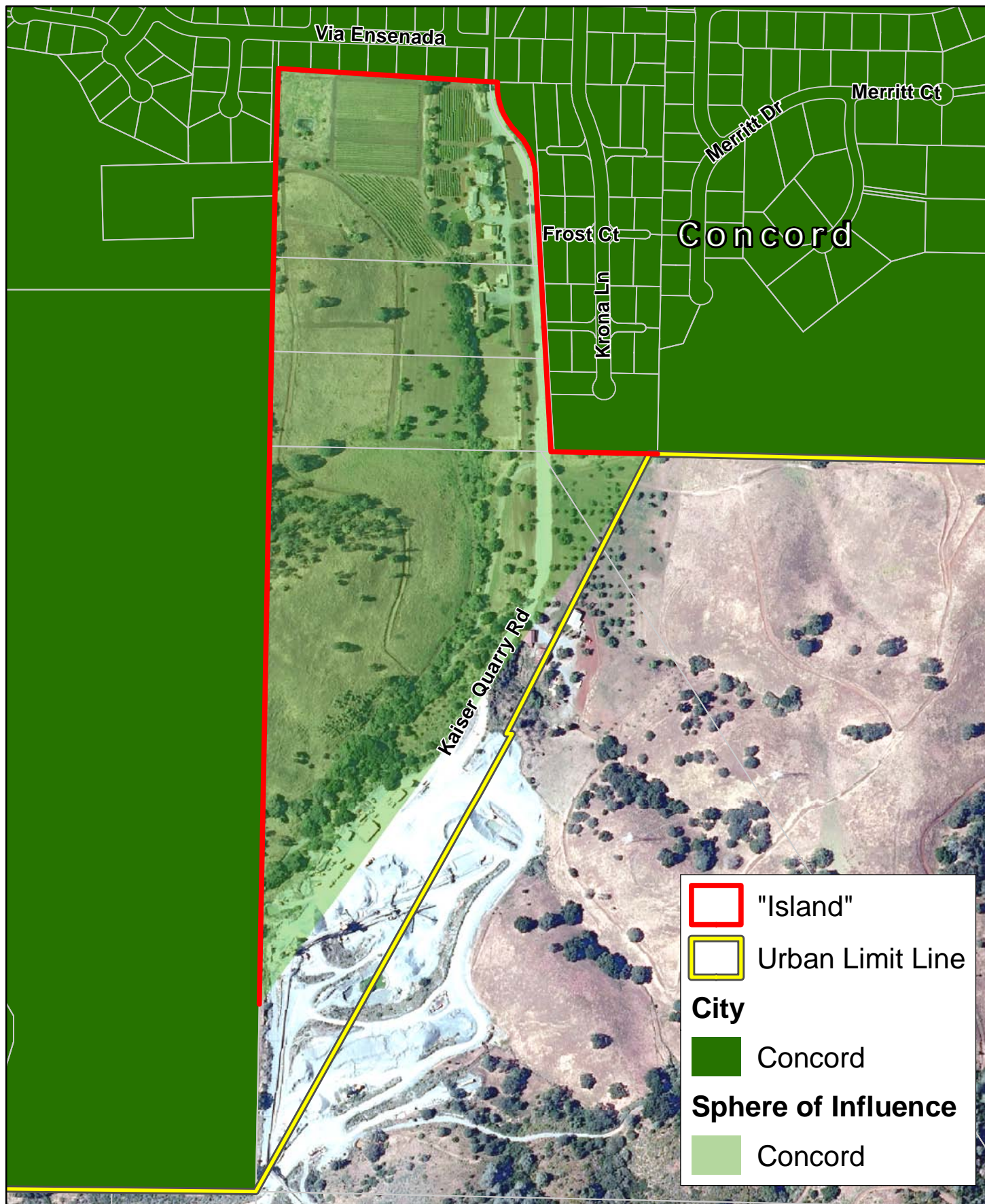




# Unincorporated "Islands" in Contra Costa County

58 Acres  
71 % Surrounded

N

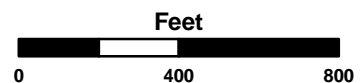
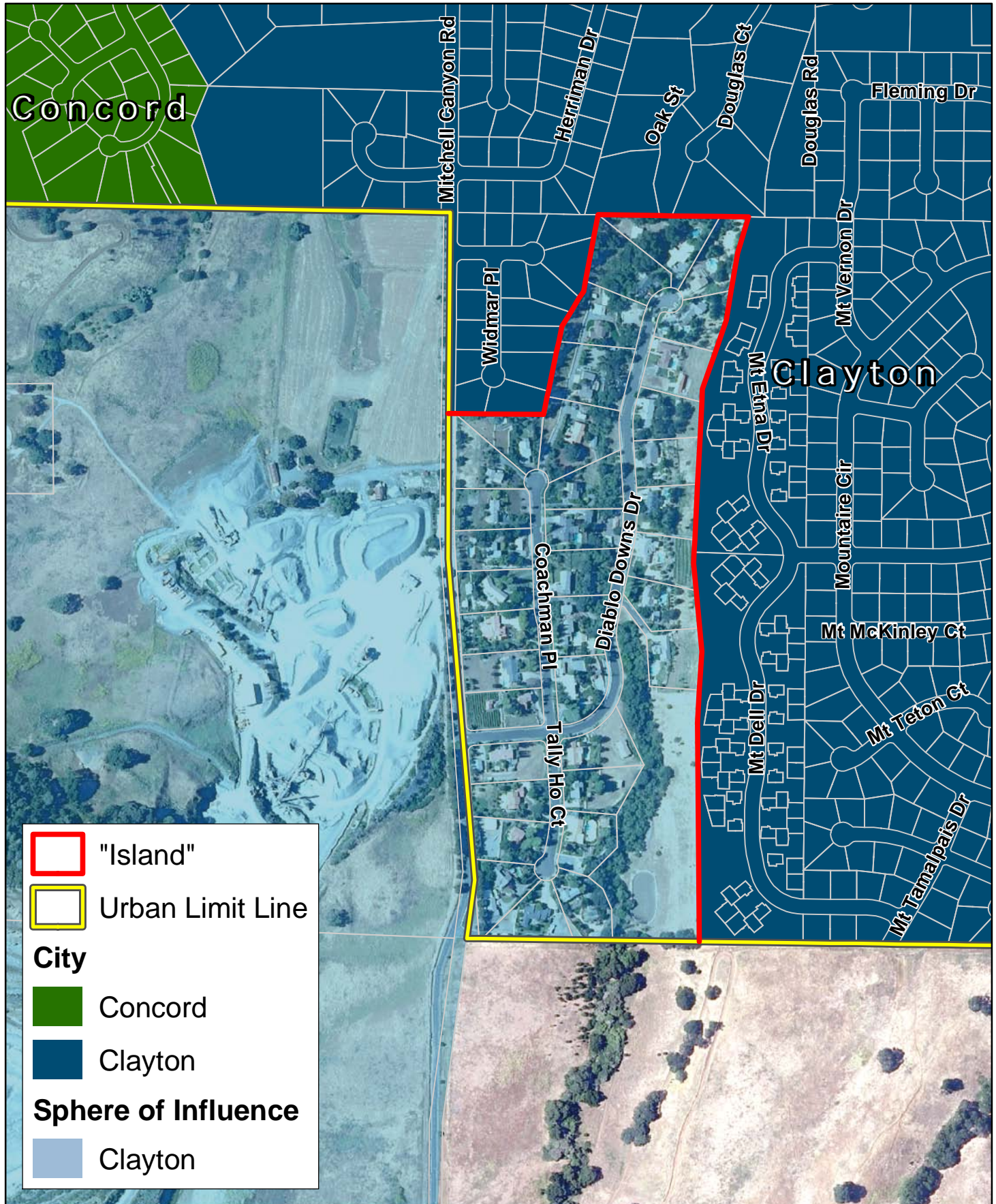




# Unincorporated "Islands" in Contra Costa County

48 Acres  
61 % Surrounded

O





# Unincorporated "Islands" in Contra Costa County

195 Acres  
100 % Surrounded

P

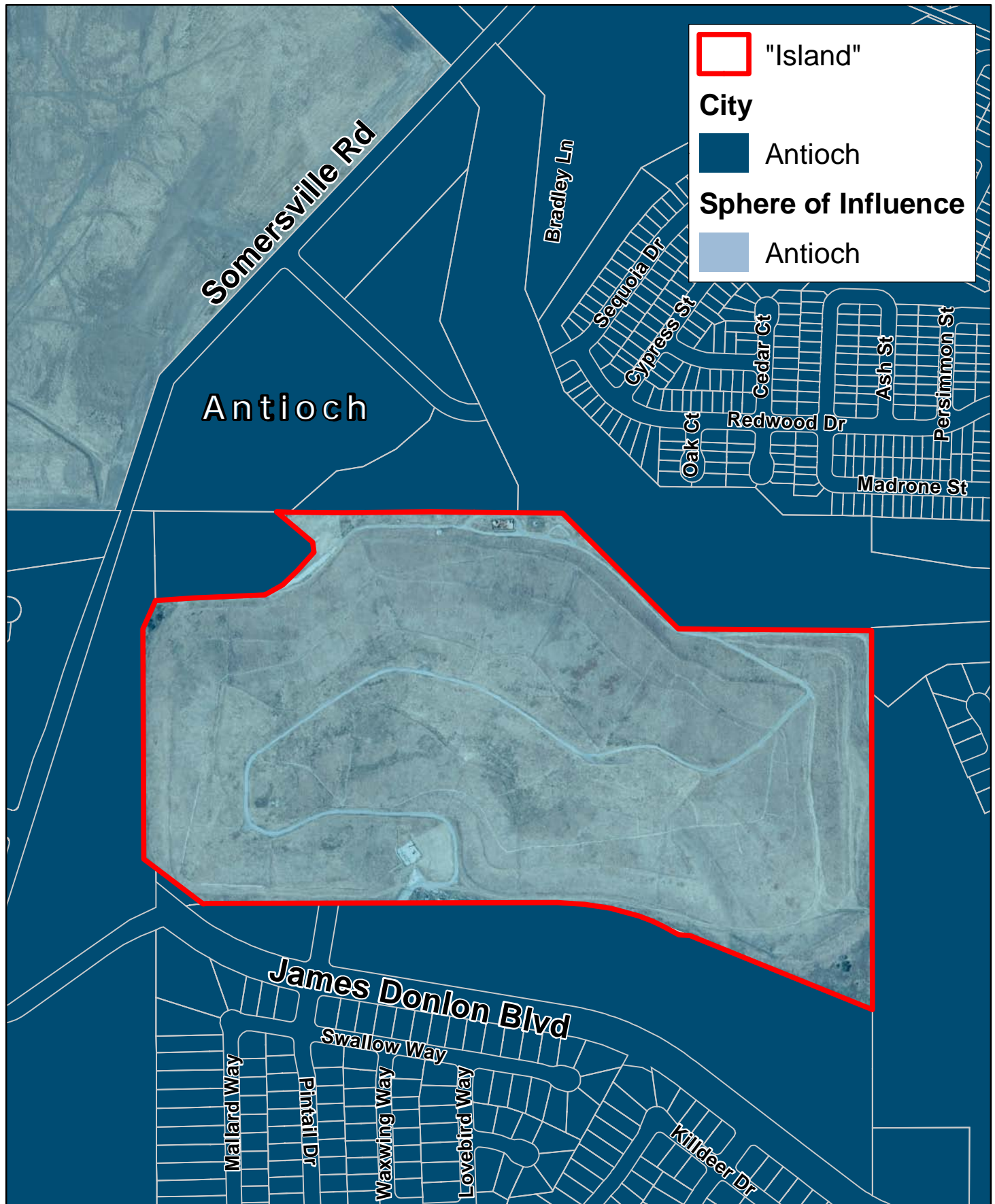




# Unincorporated "Islands" in Contra Costa County

78 Acres  
100 % Surrounded

Q

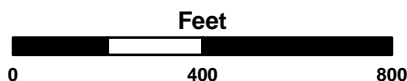




# Unincorporated "Islands" in Contra Costa County

73 Acres  
100 % Surrounded

R

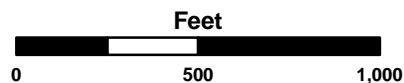
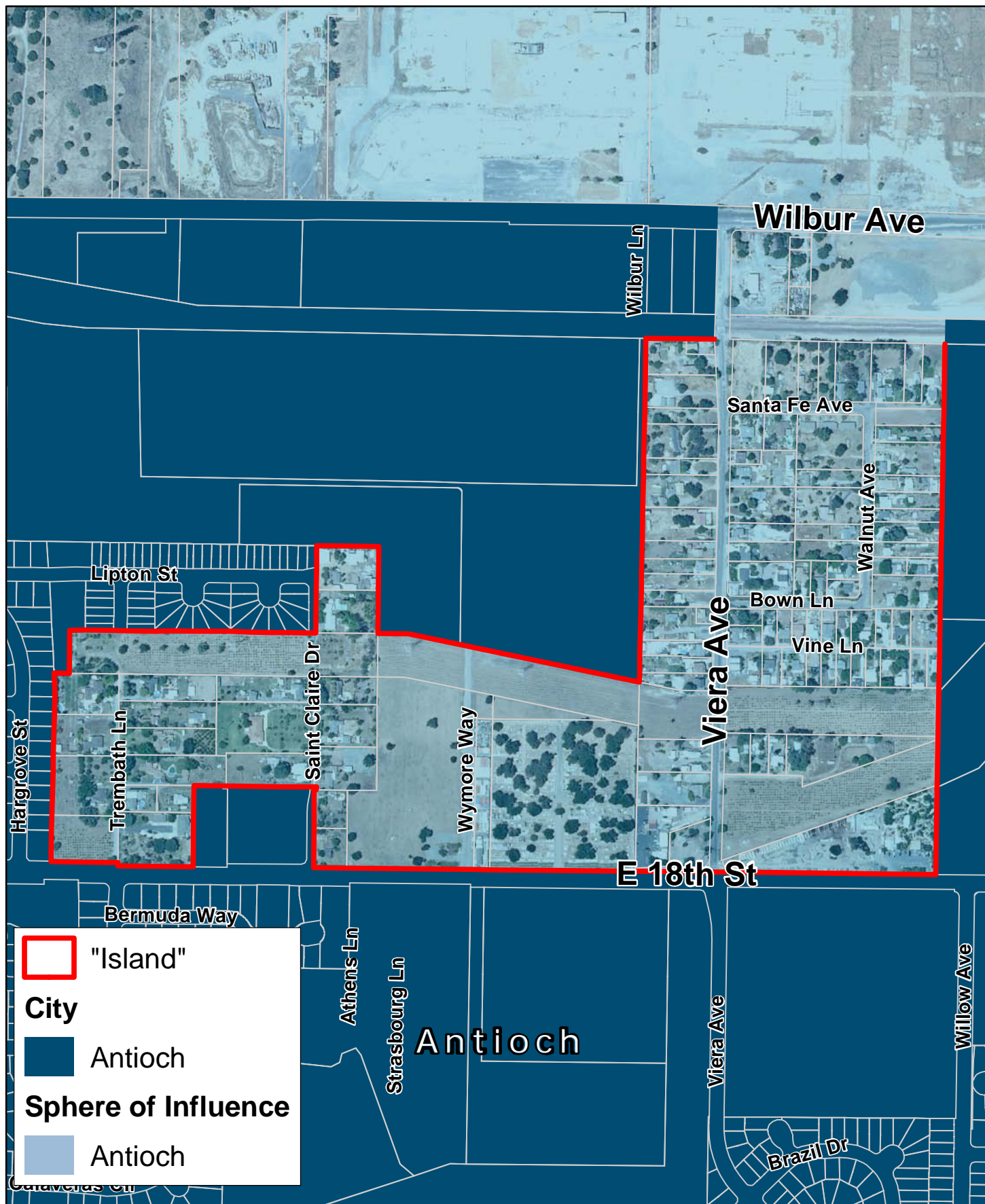




# Unincorporated "Islands" in Contra Costa County

108 Acres  
93 % Surrounded

S

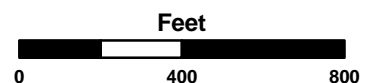
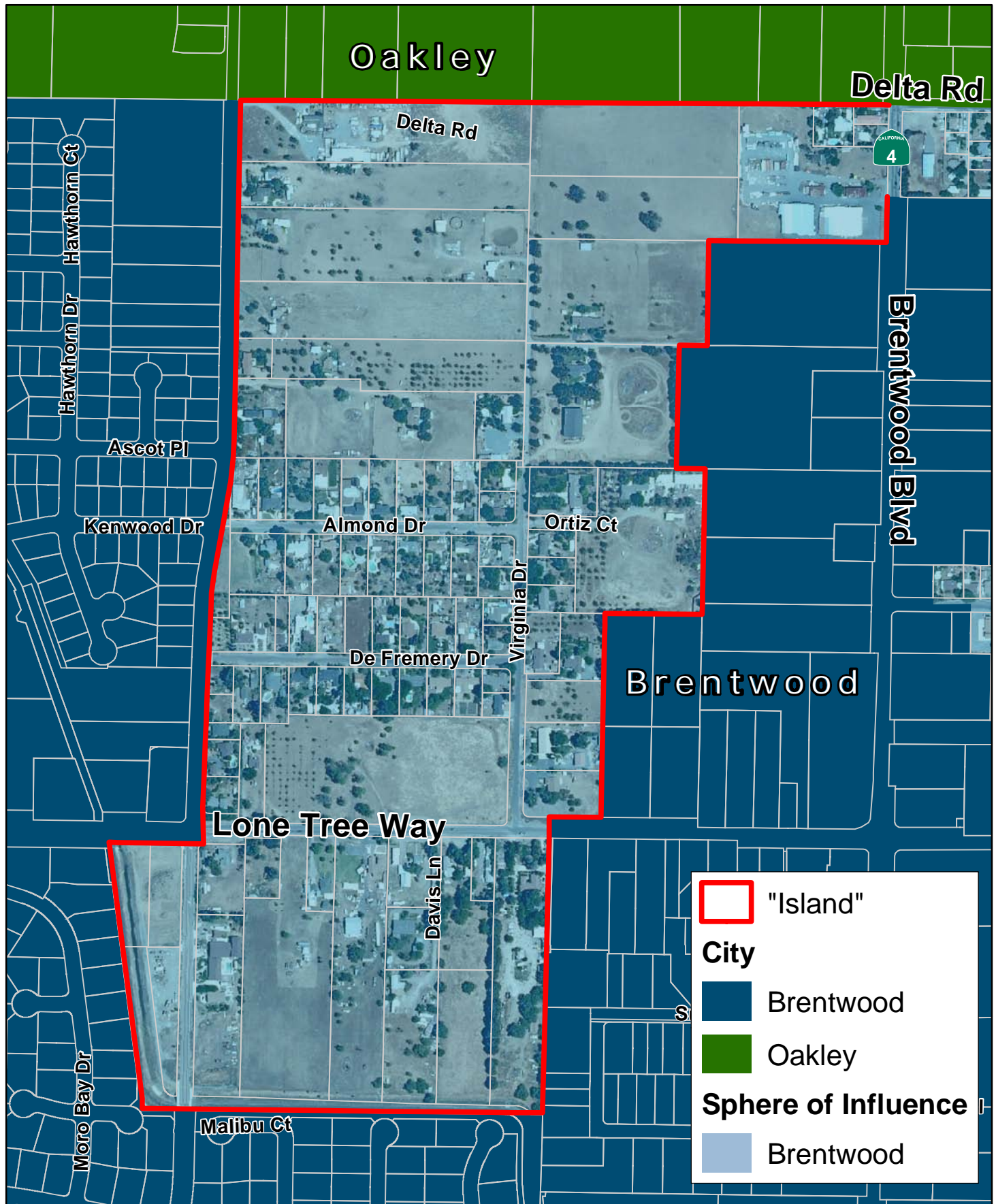




# Unincorporated "Islands" in Contra Costa County

140 Acres  
98 % Surrounded

T





# Unincorporated "Islands" in Contra Costa County

151 Acres  
85 % Surrounded

U

