

Section 02

Cemetery Districts

This page left intentionally blank

Cemetery District

ALAMO-LAFAYETTE CEMETERY DISTRICT

(Health and Safety Code §9000 et seq.)

Location of office Lafayette: 3285 Mt. Diablo Blvd, Lafayette 94549
Alamo: 130 El Portal, Danville 94526
Mailing address P.O. Box 1955
Lafayette, CA 94549-1955
Telephone numbers (925) 284-1353
FAX number (925) 284-4144
Web page <http://alamolafayettecemetery.net/>
E-mail address dm@alcdist.org

BOARD OF DIRECTORS

3 members appointed by Board of Supervisors for four-year terms

Meetings: 2nd Monday of each month, 1:00 PM

<u>District Board Members</u>	<u>Began serving</u>	<u>Expiration of term</u>
Nancy J. Flood	2006	03/2019
Mary McCosker	2014	09/2018
Carolyn Thiessen	2009	01/2021

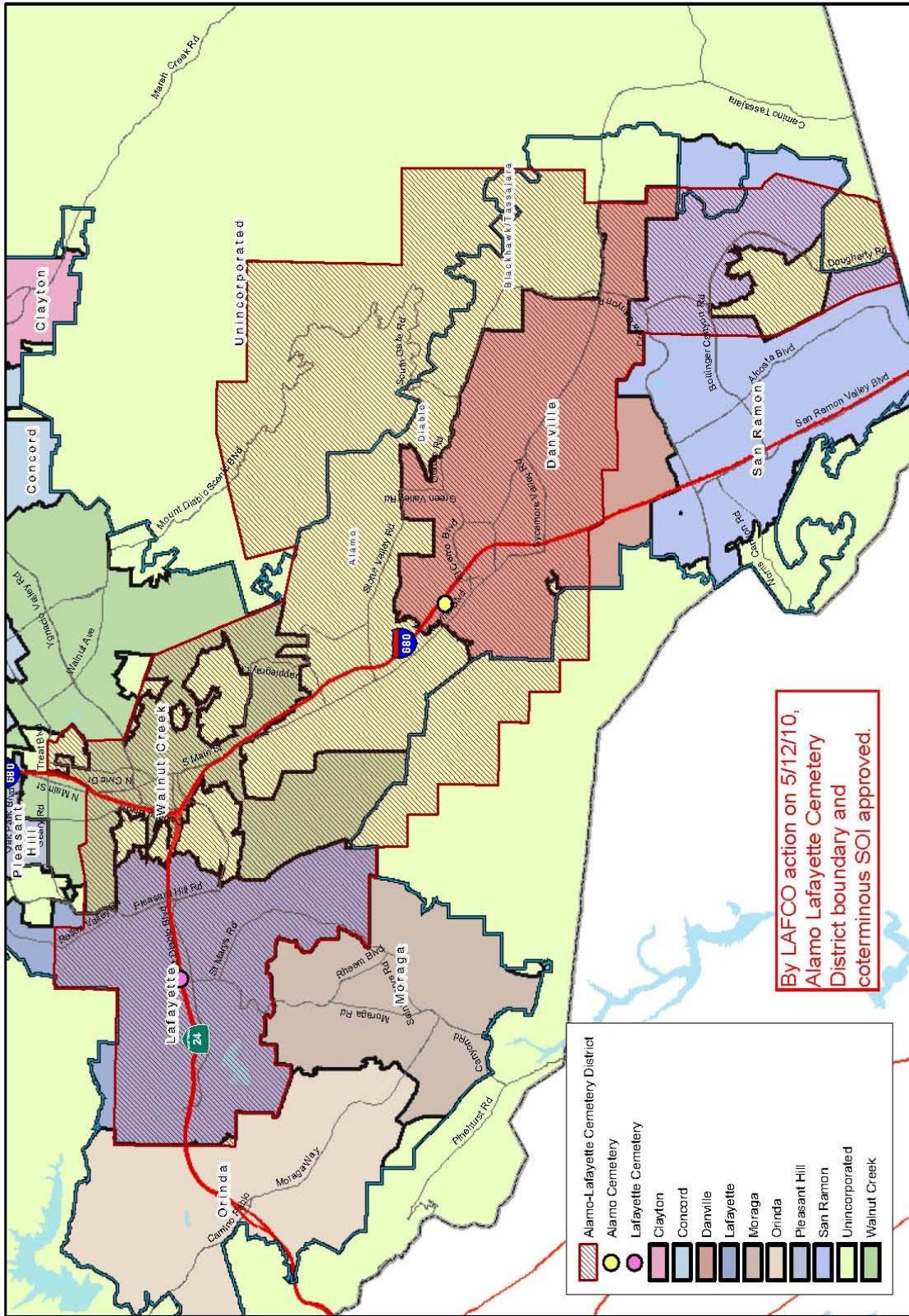
STAFF

Patricia A. Howard	District Manager
Mai Garcia	Office Assistant

INFORMATION

Year of First Burial: 1854
Year of Formation: 1937
Area Served: Alamo, Blackhawk, Danville, Diablo, Lafayette, Rossmoor and part of Walnut Creek and San Ramon
Population Served: 170,000 per CCC Dept. of Conservation & Development
Size: Approximately 7.5 acres of cemeteries
Services provided: Interments, graves maintenance, record upkeep

Alamo-Lafayette Cemetery District and Coterminous SOI



Map created by Contra Costa County GIS Department
 Date: 05/12/2010
 Project: Alamo-Lafayette Cemetery District and Coterminous SOI
 Author: GIS Department
 Reviewer: GIS Department
 Scale: 1:25,000
 Projection: NAD 83 UTM Zone 18N
 Data Source: GIS Department
 File Path: \\gis\projects\2010\051210\051210_01\051210_01.aprx

Cemetery District

BYRON-BRENTWOOD-KNIGHTSEN UNION CEMETERY DISTRICT
(B-B-K Union Cemetery District)
(Health and Safety Code §9000 et seq.)

Location of office 11545 Brentwood Boulevard, Brentwood
Mailing address P.O. Box 551
Brentwood, CA 94513
Telephone numbers (925) 634-4748
FAX number (925) 634-9783
Web page www.unioncemeterydistrict.com
E-mail address info@unioncemeterydistrict.com

BOARD OF TRUSTEES

Appointed by Board of Supervisors for four year terms of office
Terms run from January 1 to December 31 four years later

Meetings: Third Wednesday at 4:00 PM, at District office

<u>District Board Members</u>	<u>Began serving</u>	<u>Expiration of term</u>
Patricia Bristow	2014	12/2018
Barbara Guise	2001	12/2017
Sharon Marsh	2002	12/2018

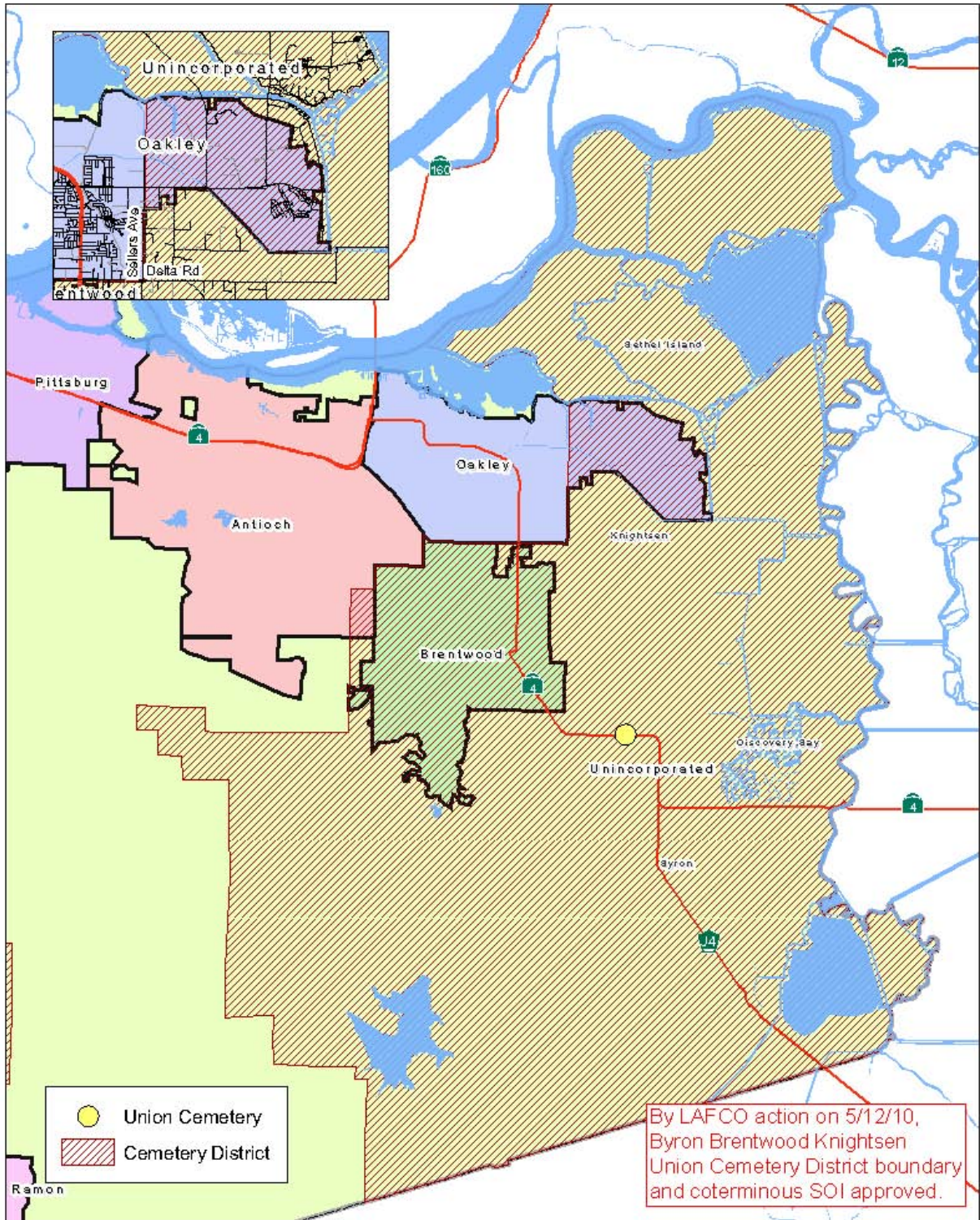
STAFF

Barbara Fee	District Manager
Aurora Garcia	Assistant
Marty Snyder, Mark Cornelius	Legal Counsel

INFORMATION

Year of First Burial: 1878; (Oldest Headstone 1867 from Previous Burial)
Year of Formation: 1928
Area Served: Byron, Brentwood, Knightsen, Discovery Bay, Bethel Island, eastern most parts of Morgan Territory. Bordered by San Joaquin County, Alameda County and Sacramento County.
Population Served: Approx. 86,000 per CCC Dept. Conservation/Development
Size: District includes far east Contra Costa County (Byron, Brentwood, Knightsen, Discovery Bay, Bethel Island, part of Oakley, Morgan Territory, Delta islands); cemetery grounds about 18.5 acres
Services provided: Interments; maintaining grounds, structures and open space

Byron Brentwood Knightsen Union Cemetery District and Coterminous SOI



Map prepared by Contra Costa LAFCO, 2017. All rights reserved. No part of this map may be reproduced without the written permission of Contra Costa LAFCO. The information on this map is for informational purposes only and does not constitute a contract or warranty of any kind. The information on this map is subject to change without notice. The information on this map is not to be used for any purpose other than that for which it was prepared.

