

Cemetery Districts

Cemetery District

ALAMO-LAFAYETTE CEMETERY DISTRICT

(Health and Safety Code §9000 et seq.)

Location of office Lafayette: 3285 Mt. Diablo Blvd, Lafayette 94549
Alamo: 130 El Portal, Danville 94526
Mailing address P.O. Box 1955
Lafayette, CA 94549-1955
Telephone numbers (925) 284-1353
FAX number (925) 284-4144
Web page
E-mail address alcdist@pacbell.net

BOARD OF DIRECTORS

3 members appointed by Board of Supervisors for four-year terms

Meetings: 2nd Monday of each month, 4:00 PM

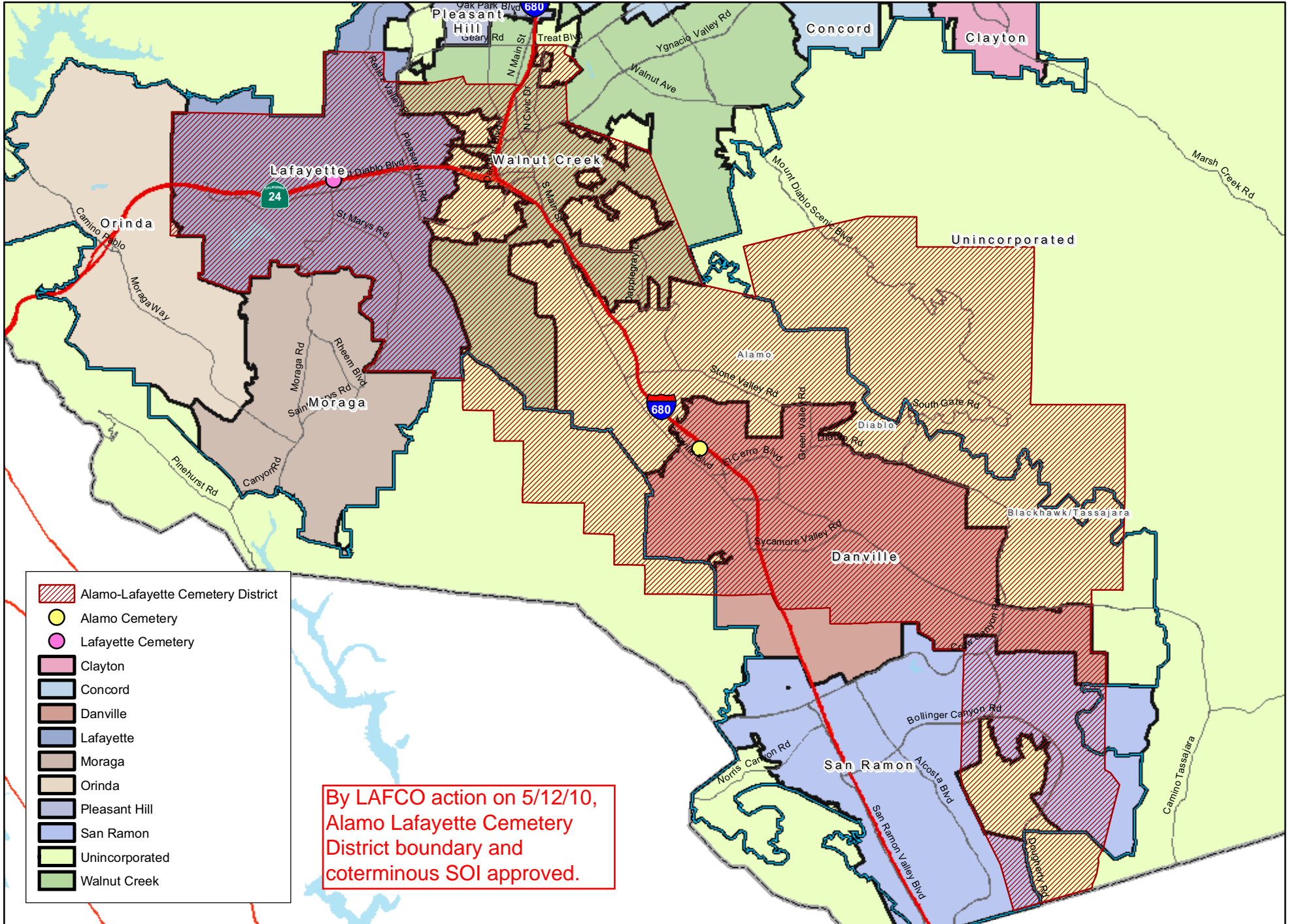
<u>District Board Members</u>	<u>Began serving</u>	<u>Expiration of term</u>
Nancy J. Flood	2006	2014
Primo E. Facchini	1977	2014
Carolyn Thiessen	2009	2013

STAFF

Patricia A. Howard	General Manager
Cecilia Larez	Assistant Superintendent

INFORMATION

Year of First Burial: 1854
Year of Formation: 1937
Area Served: Alamo, Blackhawk, Danville, Diablo, Lafayette, Rossmoor and part of Walnut Creek and San Ramon
Population Served: 162,696
Size: Approximately 7.5 acres of cemeteries
Services provided: Interments, graves maintenance, record upkeep



Cemetery District

BYRON-BRENTWOOD-KNIGHTSEN UNION CEMETERY DISTRICT

(B-B-K Union Cemetery District)

(Health and Safety Code §9000 et seq.)

Location of office 11545 Brentwood Boulevard, Brentwood
Mailing address P.O. Box 551
Brentwood, CA 94513
Telephone numbers (925) 634-4748
FAX number (925) 634-9783
Web page www.unioncemeterydistrict.com
E-mail address ucemetery@yahoo.com

BOARD OF TRUSTEES

Appointed by Board of Supervisors for four year terms of office
Terms run from January 1 to December 31 four years later

Meetings: Third Wednesday at 4:00 PM, at District office

<u>District Board Members</u>	<u>Began serving</u>	<u>Expiration of term</u>
Barbara Guise	2001	2012
Sharon Marsh	2002	2014
Vickey Rinehart	2010	2012

STAFF

Barbara Fee	District Manager
Cecilia Larez	Assistant
Mark Cornelius	Legal Counsel

INFORMATION

Year of First Burial: 1878; (Oldest Headstone 1867 from Previous Burial)

Year of Formation: 1928

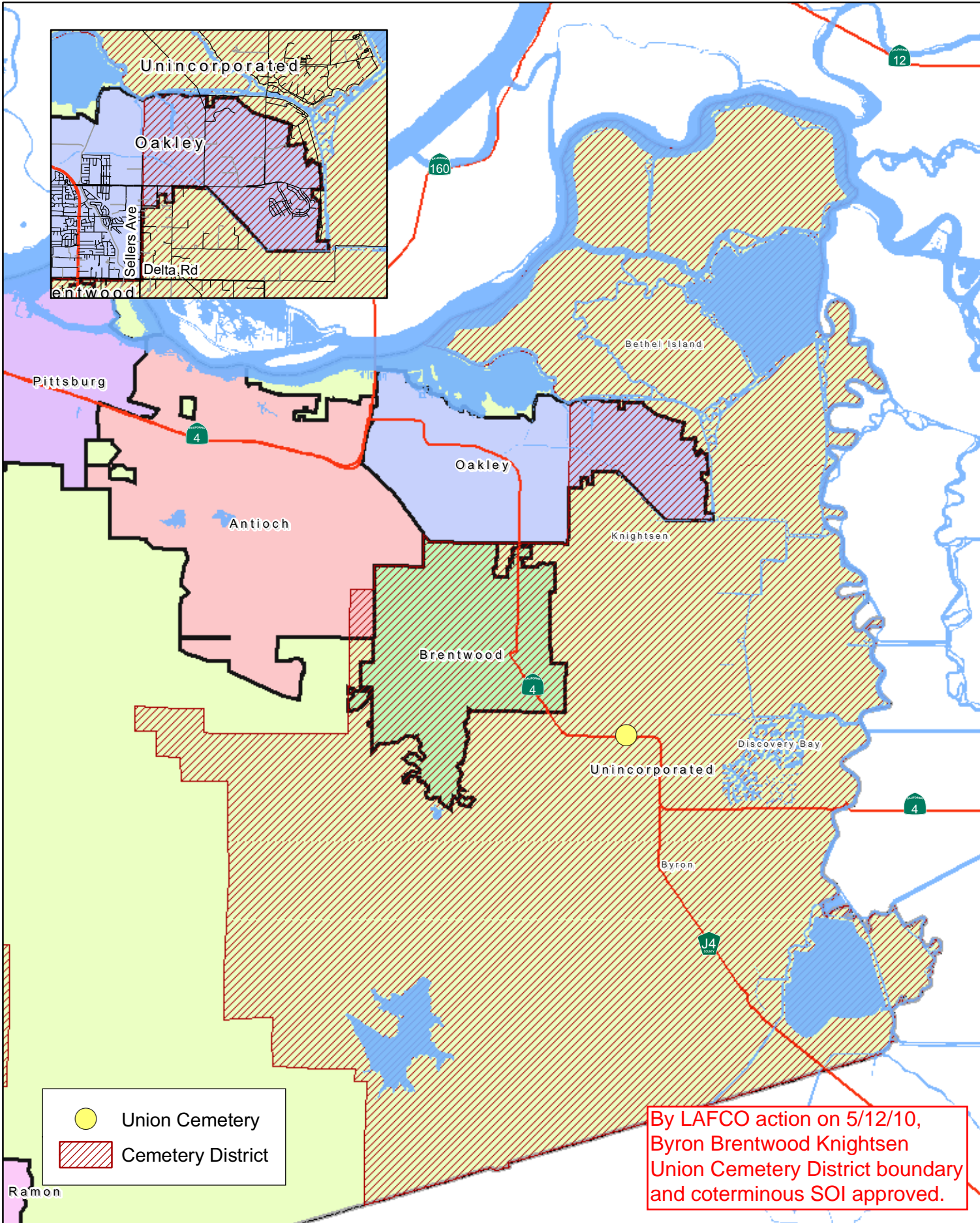
Area Served: Byron, Brentwood, Knightsen, Discovery Bay, Bethel Island, eastern most parts of Morgan Territory. Bordered by San Joaquin County, Alameda County and Sacramento County.

Population Served: Approximately 75,000

Size: District includes far east Contra Costa County (Byron, Brentwood, Knightsen, Discovery Bay, Bethel Island, part of Oakley, Morgan Territory, Delta islands); cemetery grounds about 18.5 acres

Services provided: Interments; maintaining grounds, structures and open space

Map 12-1 Byron Brentwood Knightsen Union Cemetery District and Coterminous SOI



**By LAFCO action on 5/12/10,
Byron Brentwood Knightsen
Union Cemetery District boundary
and coterminous SOI approved.**

Map created 12/2010
by Contra Costa County Conservation and Development Department
Community Development Division-CDD Group
651 Pine Street, 4th Floor North Wing, Martinez, CA 94553-0095
37.59.48.4594 122.06.35.3849

This map or dataset was created by the Contra Costa County Conservation and Development Department with data from the Contra Costa County GIS Program. Some base data, primarily City Limits, is derived from the CA State Board of Equalizers. We make no warranty, express or implied, as to the accuracy of the data. While obligated to use this data the County assumes no responsibility for its accuracy. This map contains copyrighted information and may not be altered, it may be reproduced in its current state if the source is cited. Users of this map agree to read and accept the County of Contra Costa disclaimer of liability for geographic information.

