

# **Recreation & Park Districts**

## Recreation and Park District

### AMBROSE RECREATION AND PARK DISTRICT

(Recreation and Park District Law, Public Resources Code §5780 et seq.)

Location of office and mailing address 3105 Willow Pass Road  
Bay Point CA 94565  
Telephone numbers (925) 458-1601  
FAX number (925) 458-2736  
Web page [www.AmbroseRec.org](http://www.AmbroseRec.org)  
E-mail address [TSmith@ambroserec.org](mailto:TSmith@ambroserec.org)

### BOARD OF DIRECTORS

Five members elected at large for four-year terms

Meetings: 2<sup>nd</sup> Thursday of each month

<u>District Board Members</u>	<u>Began serving</u>	<u>Expiration of term</u>
Mae Cendaña-Torlakson	2006	2014
Judith Dawson	2006	2014
Eva Garcia	2004	2012
Steve Hoagland	2006	2014
Gloria Magleby	2000	2012

### STAFF

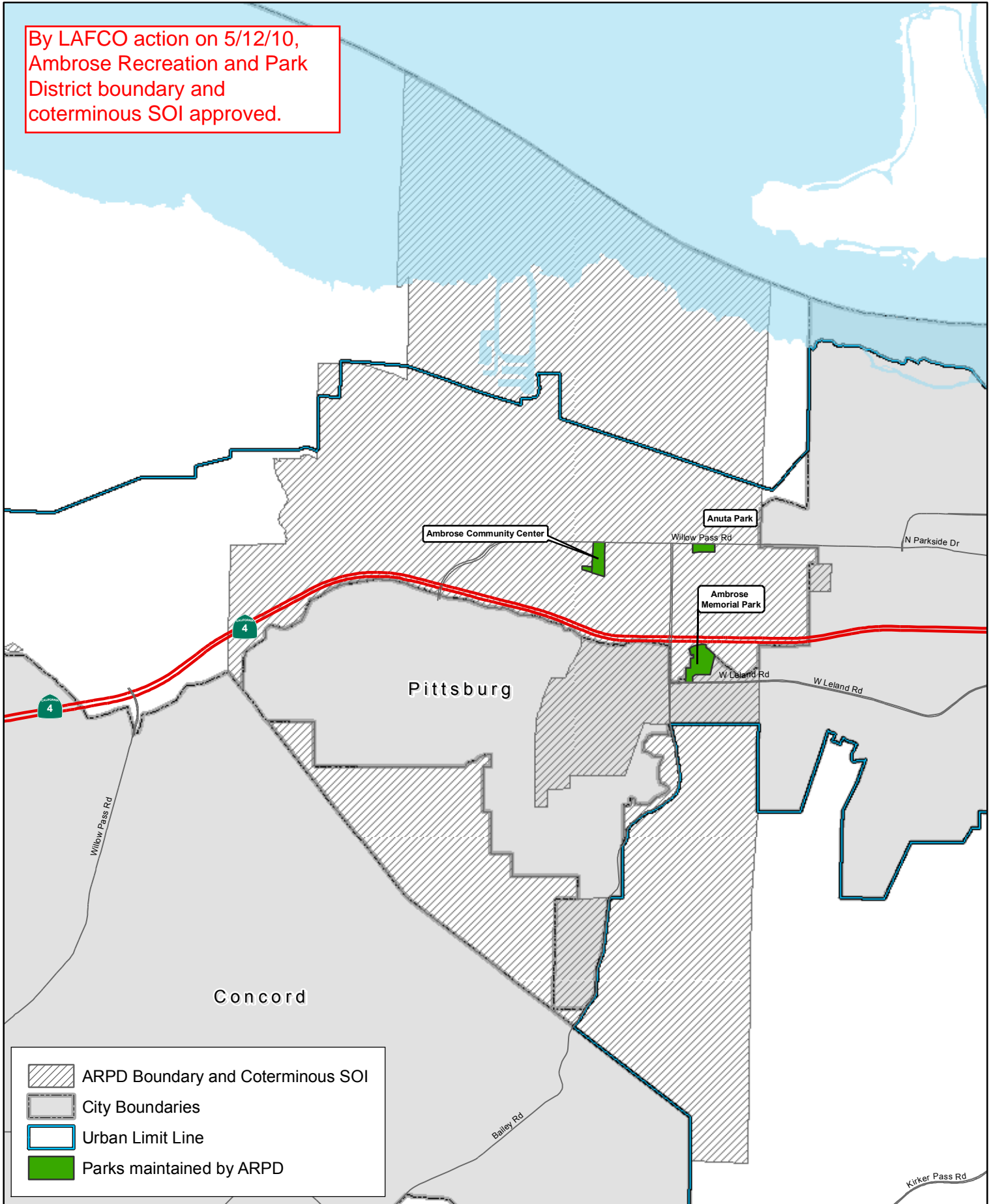
Tarry Smith	General Manager
Mary Jane Rodrigues	Clerk of the Board
Mark Cornelius	Legal Counsel





### INFORMATION

Year Formed: 1946  
Area Served: Bay Point and Cities of Pittsburg and Antioch  
Population Served: 23,000  
Registered Voters: 8,350 as of December 31, 2010  
Size: Approximately 9.3 square miles  
Services provided: Three parks, sports fields, public swimming pool, community center, various classes and programs

# Ambrose Rec and Park District and Coterminous SOI

By LAFCO action on 5/12/10,  
Ambrose Recreation and Park  
District boundary and  
coterminous SOI approved.



-  ARPD Boundary and Coterminous SOI
-  City Boundaries
-  Urban Limit Line
-  Parks maintained by ARPD



## Recreation and Park District

### EAST BAY REGIONAL PARK DISTRICT (Public Resources Code §5500 et seq.)

Location of office 2950 Peralta Oaks Court  
Oakland, CA  
Mailing address P.O. Box 5381  
Oakland, CA 94605-0381  
Telephone numbers (510) 544-2020  
FAX number (510) 569-1417  
Web page [www.ebparks.org](http://www.ebparks.org)  
E-mail address [apulido@ebparks.org](mailto:apulido@ebparks.org)

### BOARD OF DIRECTORS

Seven Board Members are elected from wards for four-year terms

Meetings: 1<sup>st</sup> and 3<sup>rd</sup> Tuesdays of the month

<u>District Directors</u>	<u>Began serving</u>	<u>Expiration of term</u>
Beverly Lane, Ward 6	1994	2014
Ted Radke, Ward 7	1978	2014
Carol Severin, Ward 3	1994	2014
Douglas L. Siden, Ward 4	1992	2012
Whitney Dotson, Ward 1	2008	2012
John Sutter, Ward 2	1996	2012
Ayn Wieskamp, Ward 5	1998	2014

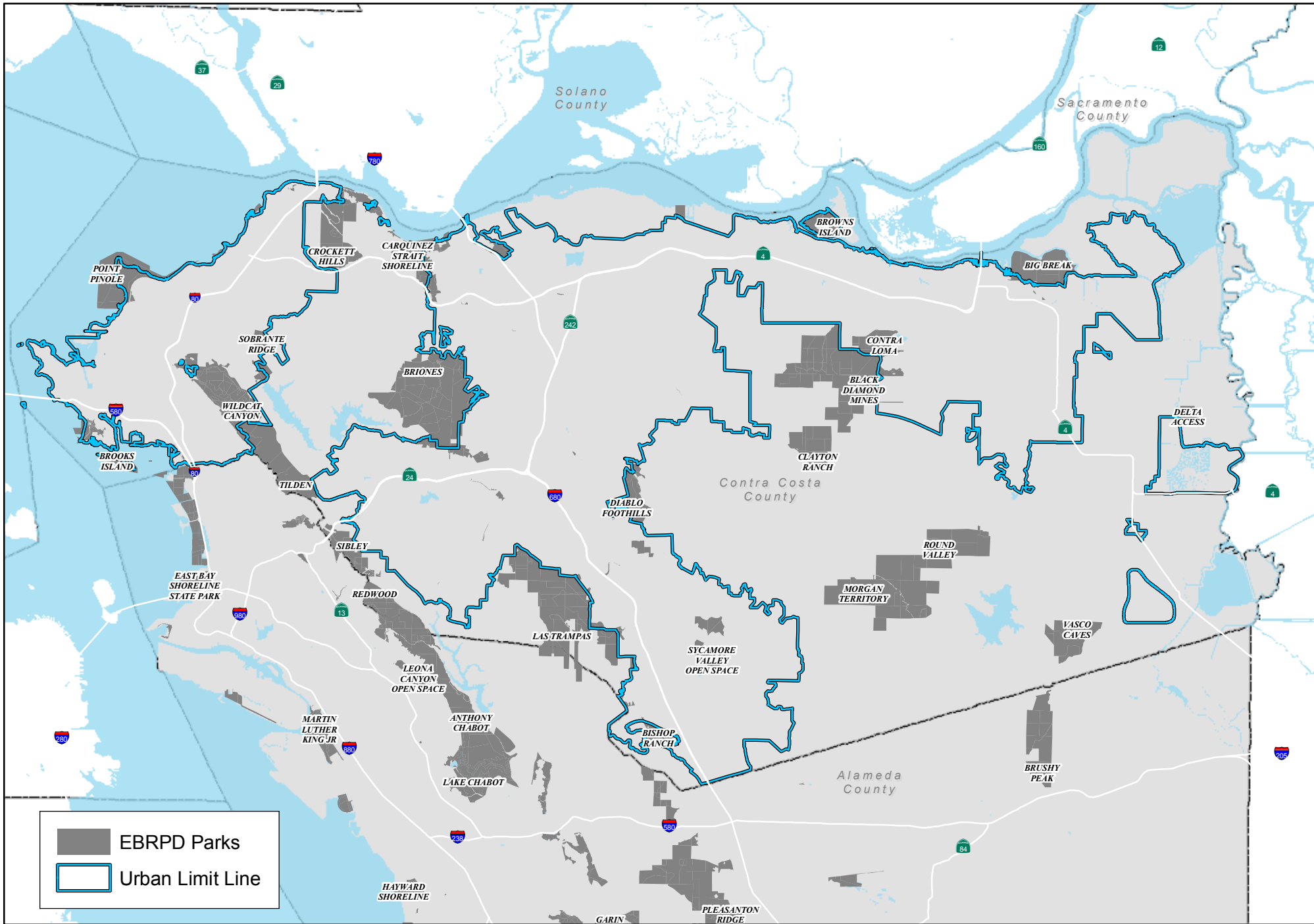
### STAFF

Robert E. Doyle	General Manager
Allen Pulido	Clerk of the Board
Ted Radosevich	Legal Counsel

### INFORMATION

Year Formed: 1934  
Area Served: All of Alameda and Contra Costa counties  
Population Served: 2.4 million  
Registered Voters: 527,286 in Contra Costa County as of December 31, 2010  
Size: Approximately 1,745 square miles (over 107,000 acres of parklands, 31 regional inter-park trails, and 1,100 miles of trails within parklands).  
Services provided: Operate and maintain regional parks and trails, and parkland; preserve wildlife habitat and cultural/ historic resources; provide recreational & educational activities and public safety

# East Bay Regional Park District



EBRPD Parks  
 Urban Limit Line

Map created 7/28/2009  
 by Contra Costa County Community Development, GIS Group  
 651 Pine Street, 4th Floor North Wing, Martinez, CA 94553-0095  
 37.59-48.455N 122.06-35.384W

This map was created by the Contra Costa County Community Development Department with data from the Contra Costa County GIS Program. Some base data, primarily City Limits, is derived from the CA State Board of Equalization's tax rate areas. While obligated to use this data the County assumes no responsibility for its accuracy. This map contains copyrighted information and may not be altered. It may be reproduced in its current state if the source is cited. Users of this map agree to read and accept the County of Contra Costa disclaimer of liability for geographic information.



## Recreation and Park District

### GREEN VALLEY RECREATION AND PARK DISTRICT (Recreation and Park District Law, Public Resources Code §5780 et seq.)

<u>Location of office</u>	1500 Green Valley Road, Danville
<u>Mailing address</u>	PO Box 112 Diablo CA 94528
<u>Telephone numbers</u>	(925) 837-9904 or (925) 820-6870
<u>FAX number</u>	NA
<u>Web page</u>	www.thegreenvalleypool.com
<u>E-mail address</u>	greenvalleypool@hotmail.com

### BOARD OF DIRECTORS

Five member board elected at large for four year terms.

Meetings: Every 4 to 6 weeks

<u>District Board Members</u>	<u>Began serving</u>	<u>Expiration of term</u>
Cynthia Larson	2010	2014
Blythe Soria	2007	2012
Bill Montana	2007	2014
Cadi Stephenson	2008	2014
Scott Horton	2008	2012

### STAFF

General Manager  
Clerk of the Board  
Legal Counsel

### INFORMATION

<u>Year Formed:</u>	1949
<u>Area Served:</u>	Danville/Alamo and other areas of Contra Costa County
<u>Population Served:</u>	118 Member Families, totaling 493 persons in 2010
<u>Registered Voters:</u>	717 as of December 31, 2010
<u>Size:</u>	Approximately 9 square miles
<u>Services provided:</u>	The District owns and operates a swimming pool for Danville's Cameo Acres Neighborhood and surrounding areas of Danville and Alamo. Swim Lessons, Swim Team, BBQs, Movie Nights and Fitness Classes are also provided.

# Green Valley Recreation & Park District and Coterminous Sphere of Influence



## Recreation and Park District

### PLEASANT HILL RECREATION AND PARK DISTRICT (Recreation and Park District Law, Public Resources Code §5780 et seq.)

<u>Location of office and mailing address</u>	147 Gregory Lane Pleasant Hill, CA 94523
<u>Telephone numbers</u>	(925) 682-0896
<u>FAX number</u>	(925) 682-1633
<u>Web page</u>	<a href="http://www.pleasanthillrec.com">www.pleasanthillrec.com</a>
<u>E-mail address</u>	<a href="mailto:bberggren@pleasanthillrec.com">bberggren@pleasanthillrec.com</a>

### BOARD OF DIRECTORS

Five members elected at large for four-year terms

Meetings: 2<sup>nd</sup> & 4<sup>th</sup> Wednesdays of each month at 6:00 PM except for November and December when meetings are the 1<sup>st</sup> & 3<sup>rd</sup> Wednesdays

<u>District Board Members</u>	<b>Began serving</b>	<u>Expiration of term</u>
Dennis Donaghu	2006	2012
Sandra Bonato	2009	2014
Cecile Shepard	1996	2014
Bobby Glover	2011	2014
Sherry Sterrett	1996	2012

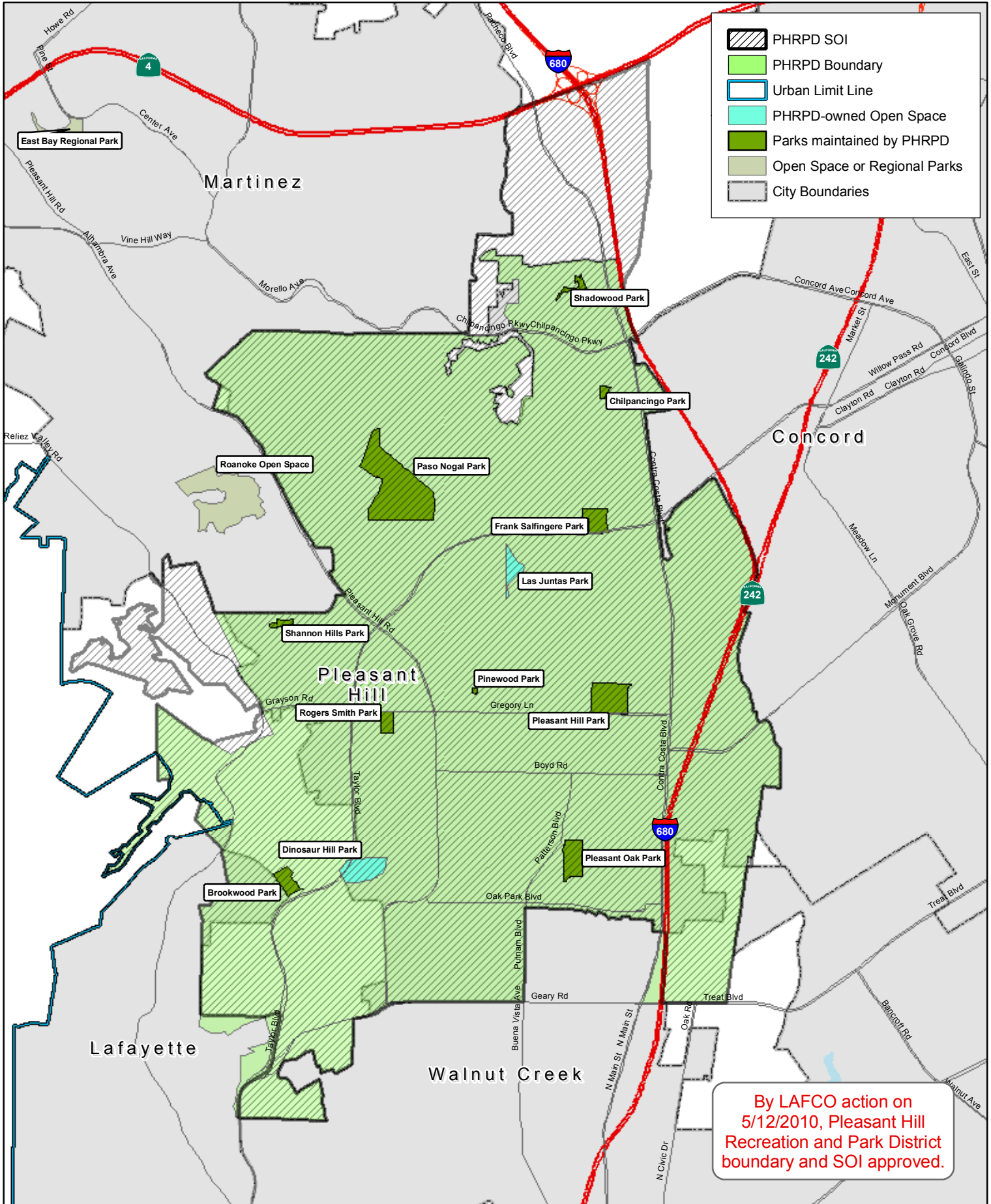
### STAFF

Robert B. Berggren	General Manager
Robert B. Berggren	Clerk of the Board
Mark Cornelius	Legal Counsel

### INFORMATION

<u>Year Formed:</u>	1951
<u>Area Served:</u>	City of Pleasant Hill, unincorporated areas of Lafayette and Walnut Creek
<u>Population Served:</u>	40,003+
<u>Registered Voters:</u>	22,561 as of December 31, 2010
<u>Size:</u>	Approximately nine square miles
<u>Services provided:</u>	Parks and recreation facilities, open space, recreation programs and activities.

# Pleasant Hill Recreation and Park District and Sphere of Influence



By LAFCO action on 5/12/2010, Pleasant Hill Recreation and Park District boundary and SOI approved.



**Recreation and Park District**

**ROLLINGWOOD-WILART RECREATION AND PARK DISTRICT**

(Recreation and Park District Law, Public Resources Code §5780 et seq.)

Location of office 2395 Greenwood Drive  
San Pablo, CA 94806  
Mailing address 2722 Rollingwood Drive  
San Pablo, CA 94806  
Telephone numbers (510) 223-5488  
FAX number  
Web page  
E-mail address [charrude@comcast.net](mailto:charrude@comcast.net)

**BOARD OF DIRECTORS**

Three members elected at large for four-year terms

Meetings: First Wednesday of month at 8:00 AM

<u>District Board Members</u>	<u>Began serving</u>	<u>Expiration of term</u>
Bennie Quantana		2011
James A. Barone		2014
Charlotte Rude		2011

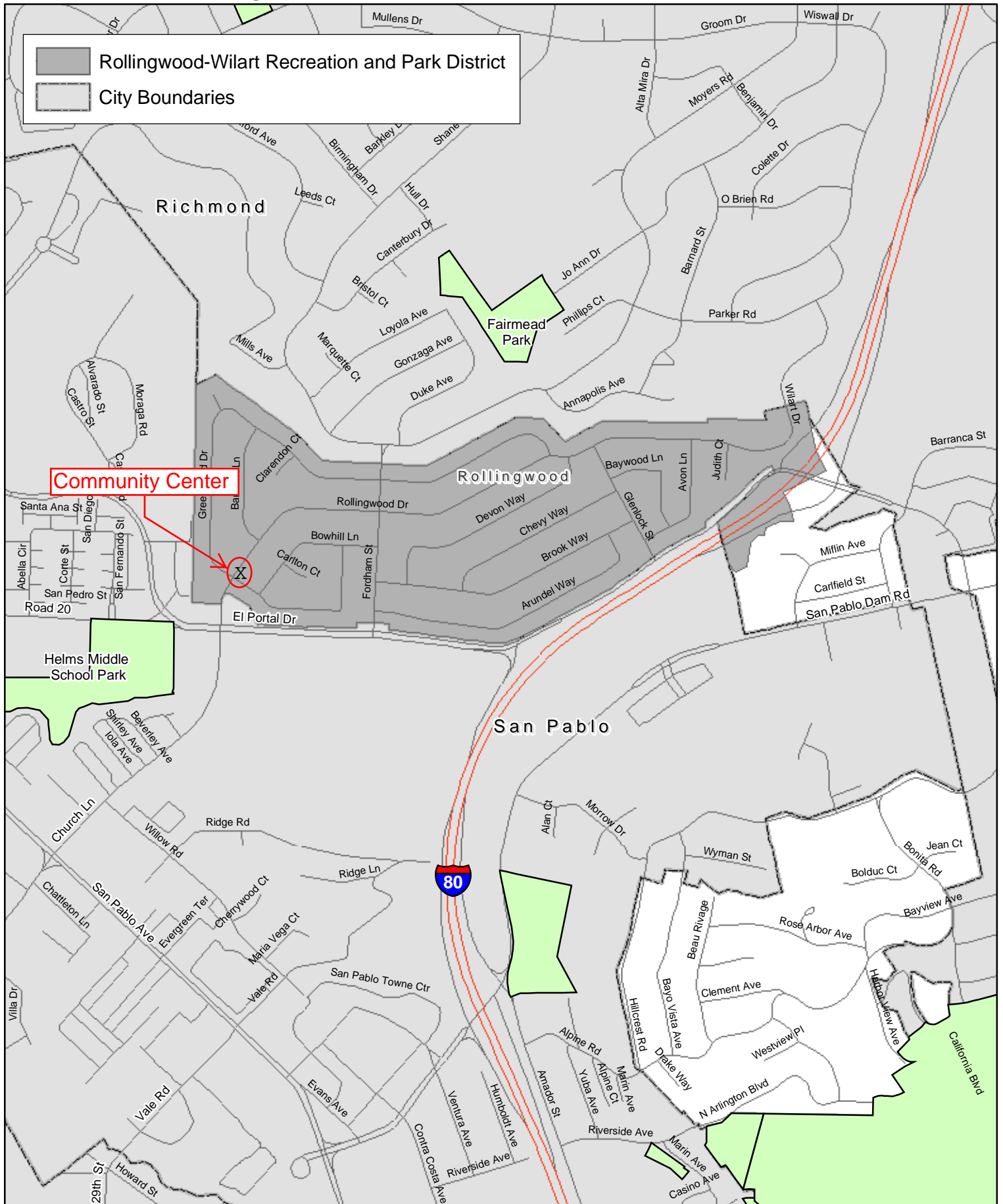
**STAFF**

Charlotte Rude	General Manager
Charlotte Rude	Clerk of the Board
	Legal Counsel

**INFORMATION**

Year Formed: 1956  
Area Served: Rollingwood  
Population Served: 750 homes  
Registered Voters: 834 as of August 12, 2005  
Size: Less than one square mile  
Services provided: Operate and maintain a community center for recreation programs and events

# Rollingwood-Wilart Recreation and Park District



Map revised 4/01/2009  
 by Contra Costa County Conservation and Development Department  
 Contra Costa County, California  
 651 Pitt Street, 4th Floor North Wing, Martinez, CA 94553-0095  
 925/446-4514 925/251-3549

This map or dataset was created by the Contra Costa County Conservation and Development Department with data from the Contra Costa County GIS Program. Some data from other County entities is derived from the Contra Costa County GIS Program. The user assumes responsibility for its accuracy. This map contains copyrighted information and may not be altered. It may be reproduced in its current state for academic or personal use only. The user agrees to hold and accept the County of Contra Costa disclaimer of liability for geographic information.

