

# Reclamation Districts

## Reclamation District

### RECLAMATION DISTRICT 799 (Hotchkiss Tract)

(Special Act of California Legislature, Statutes 1911:342, California Water Code §50300 et seq.)

Location of office 6325 Bethel Island Rd.  
Bethel Island, CA 94511  
Mailing address PO Box 353  
Bethel Island, CA 94511  
Telephone numbers (925) 684-2398  
FAX number (925) 684-2399  
Web page  
E-mail address [rd799\\_angeliahope@yahoo.com](mailto:rd799_angeliahope@yahoo.com)

### BOARD OF DIRECTORS

Five members elected for four-year terms

Meetings: Last Thursday of each month; 2:00 PM

<u>District Board Members</u>	<u>Began serving</u>	<u>Expiration of term</u>
David Dal Porto	2/2007	11/2011
A. John Hanson	11/2010	11/2014
Jane Lorie, D.V.M.	11/2007	11/2014
Diane Shipway	2/2007	11/2011
Dale Wong	11/2007	11/2014

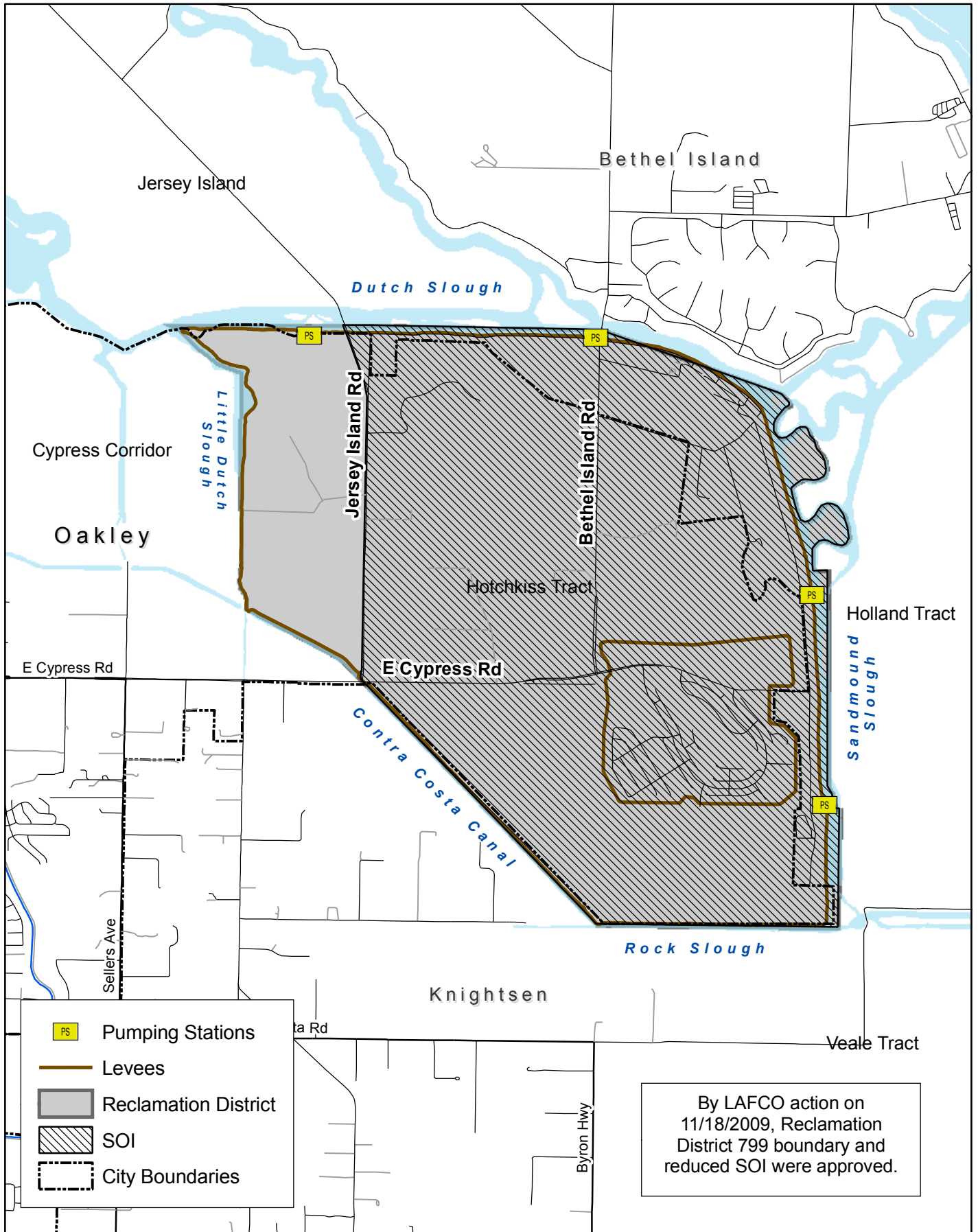
### STAFF

Blake Johnson - HDR Engineering, Inc.	District Engineer
Keith De Lapp - HDR Engineering, Inc.	Engineering Consultant
Angelia Tant	District Secretary/Manager
Dan Schroeder (Neumiller & Beardslee)	Legal Counsel

### INFORMATION

Year Formed: 1911  
Area Served: Oakley  
Population Served: Approximately 969  
Size: Approximately 3,100 acres  
Services provided Maintenance and operation of levees and related drainage facilities

# Reclamation District No. 799 (Hotchkiss Tract) and SOI



## Reclamation District

### RECLAMATION DISTRICT 800 (Byron Tract) (California Water Code §50300 et seq.)

Location of office 1540 Discovery Bay Blvd, Suite A  
Discovery Bay, CA 94505  
Mailing address PO Box 262  
Byron, CA 94514  
Telephone numbers (925) 634-2351  
FAX number (925) 634-2089  
Web page [www.rd800.org](http://www.rd800.org)  
E-mail address [sonnet@rd800.org](mailto:sonnet@rd800.org)

### BOARD OF DIRECTORS

Five members elected at large by landowners for four year terms

Meetings: First Thursday at 10:00 am

<u>District Board Members</u>	<u>Began serving</u>	<u>Expiration of term</u>
Bob Anderson	1993	2013
David Harris	1999	2011
Pete Hansen	2009	2013
Jeff Dawson	2007	2011
Robert Lyman	2005	2013

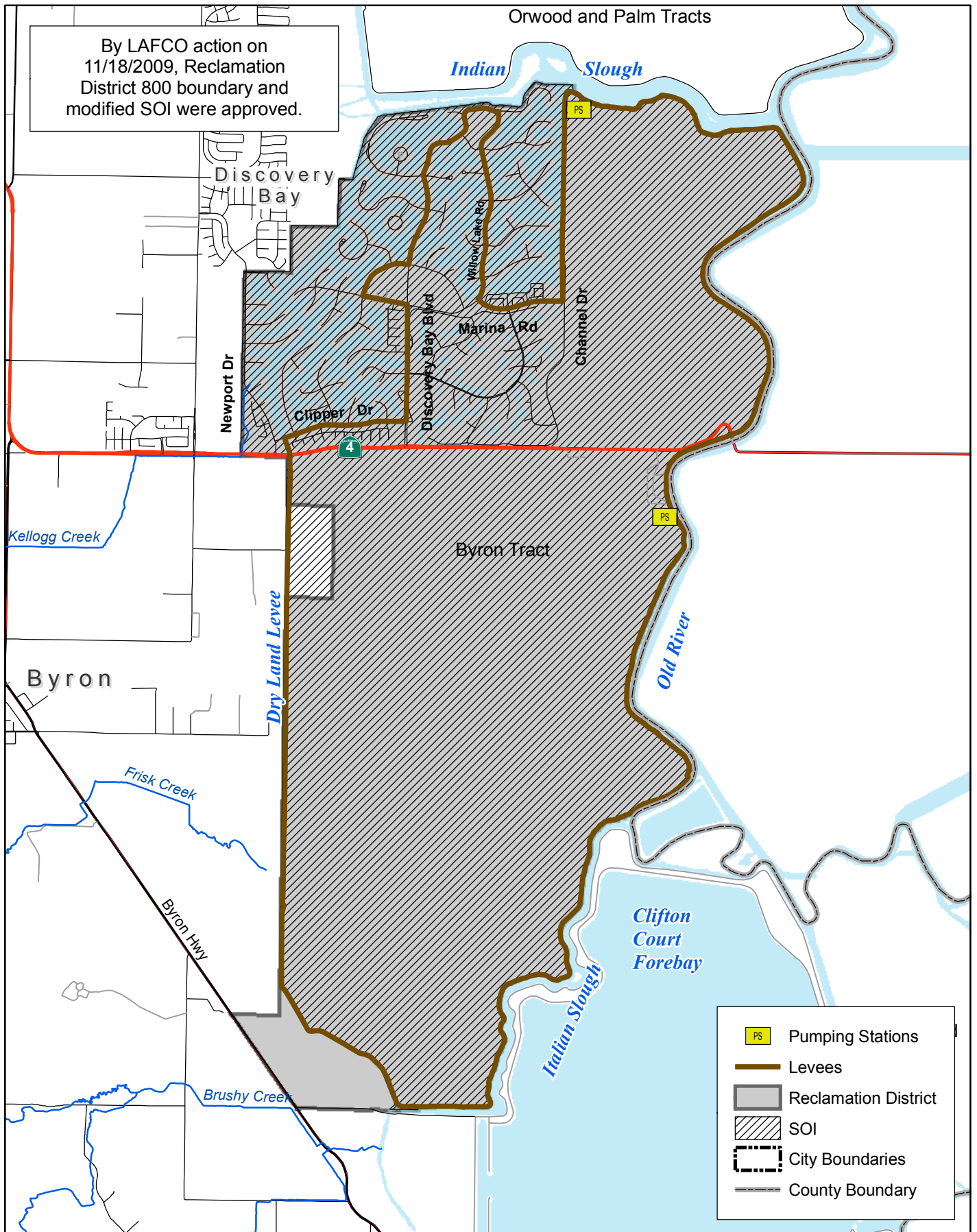
### STAFF

Jeffrey D. Conway	District Manager
Chris Neudeck	District Engineer
Sonnet Rodrigues	District Secretary
David Aladjem	Legal Counsel

### INFORMATION

Year Formed: 1909  
Area Served: Byron Tract  
Population Served: Approximately 7,656  
Size: Approximately 6,933 acres  
Services provided: Flood protection; levee maintenance, drainage, water circulation

# Reclamation District No. 800 (Byron Tract) and SOI



By LAFCO action on 11/18/2009, Reclamation District 800 boundary and modified SOI were approved.

	Pumping Stations
	Levees
	Reclamation District
	SOI
	City Boundaries
	County Boundary



## Reclamation District

### RECLAMATION DISTRICT 830 (Jersey Island)

(Special Act of California Legislature, Statutes 1911:342, California Water Code §50300 et seq.)

<u>Location of office</u>	450 Walnut Meadows Drive, Oakley
<u>Mailing address</u>	P.O. Box 1105 Oakley CA 94561
<u>Telephone numbers</u>	(925) 625-2279
<u>FAX number</u>	(925) 625-0169
<u>Web page</u>	<a href="http://www.ironhousesanitarydistrict.com">www.ironhousesanitarydistrict.com</a>
<u>E-mail address</u>	<a href="mailto:haefke@isd.us.com">haefke@isd.us.com</a>

### BOARD OF DIRECTORS

Three members elected at large for four-year terms

Meetings: As needed

<u>District Board Members</u>	<u>Began serving</u>	<u>Expiration of term</u>
Marc Haefke	2005	2013
Jenny Skrel	2011	2013
Thomas Williams	2000	2013

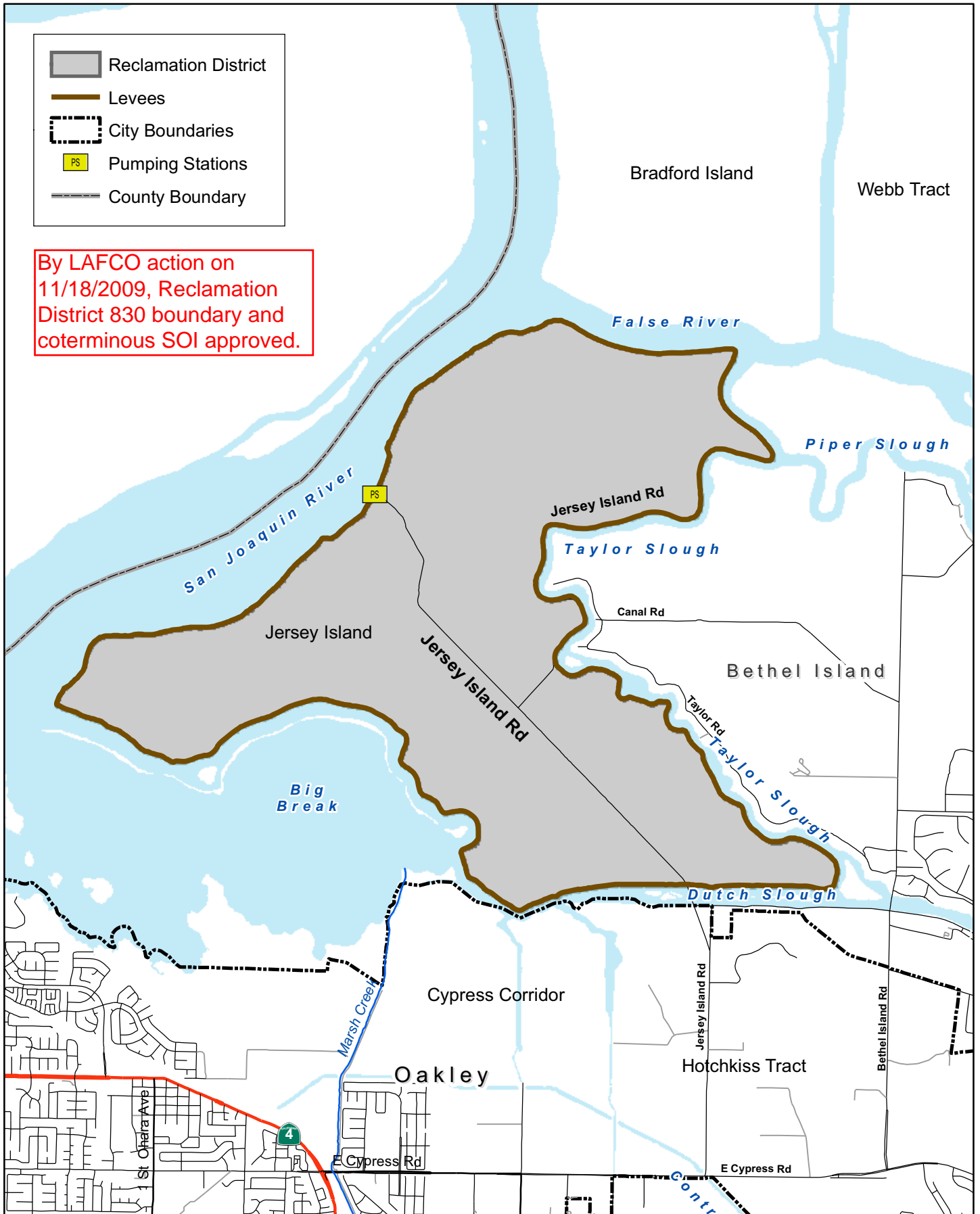
### STAFF

[NO STAFF]

### INFORMATION

<u>Year Formed:</u>	1911
<u>Area Served:</u>	Jersey Island
<u>Population Served:</u>	3
<u>Size:</u>	Approximately 3,750 acres
<u>Services provided:</u>	Maintenance of levees and related drainage facilities

# RD 830 Boundary and Coterminous SOI



## Reclamation District

### RECLAMATION DISTRICT 2024 (Orwood and Palm Tracts) (California Water Code §50000 et seq.)

Location of office 235 East Weber Avenue  
Stockton CA 95202  
Mailing address PO Box 1461  
Stockton CA 95201-1461  
Telephone numbers (209) 465-5883  
FAX number (209) 465-3956  
Web page  
E-mail address [ngmplcs@pacbell.net](mailto:ngmplcs@pacbell.net)

### BOARD OF DIRECTORS

Five-member board elected at large by landowners for four-year terms. Board member must be a landowner or legal representative of a landowner within the District.

Meetings: As needed; on call, usually quarterly

<u>District Board Members</u>	<u>Began serving</u>	<u>Expiration of term</u>
Robert Cecchini	1999	2011
John R. Jackson	2007	2011
George S. (Stan) Nunn	2005	2013
Don Wagenet	1997	2013
Vacant		

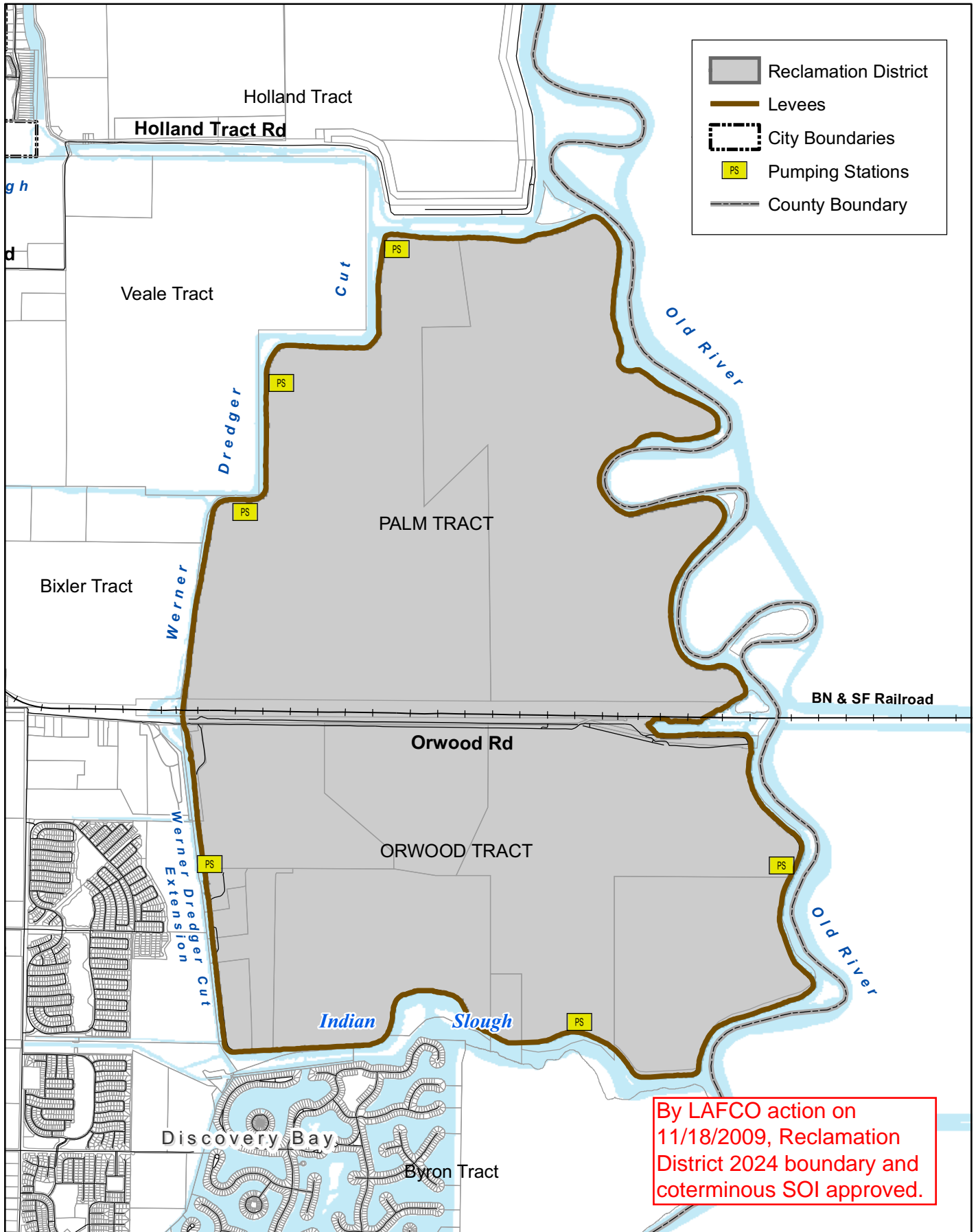
### STAFF

Dante John Nomellini, Sr. General Manager  
Secretary and Counsel

### INFORMATION

Year Formed: 1918. Consolidated with Reclamation District 2036 in 1995  
Area Served: Orwood and Palm Tracts  
Population Served: 40  
Size: Approximately 6,574 acres  
Services provided: Reclamation including levees, flood control and drainage

# RD 2024 Boundary and Coterminous SOI



By LAFCO action on 11/18/2009, Reclamation District 2024 boundary and coterminous SOI approved.



**Reclamation District**

**RECLAMATION DISTRICT 2025 (Holland Tract)**  
(California Water Code §50300 et seq.)

Location of office and mailing address 311 East Main Street, Suite 504  
Stockton, CA 95202  
Telephone numbers (209) 943-5551  
FAX number (209) 943-0251  
Web page  
E-mail address [ahoslett@sbcglobal.net](mailto:ahoslett@sbcglobal.net)

**BOARD OF TRUSTEES**

Three landowners or legal representatives of landowners elected at large for four-year terms

Meetings: Several times a year, dates and times vary

<u>District Board Members</u>	<u>Began serving</u>	<u>Expiration of term</u>
David A. Forkel		2011
Mark Landis	2010	2011
John L. Winther		2011

**STAFF**

Al Warren Hoslett	General Manager
Al Warren Hoslett	District Secretary
	Legal Counsel

**INFORMATION**

Year Formed: 1918

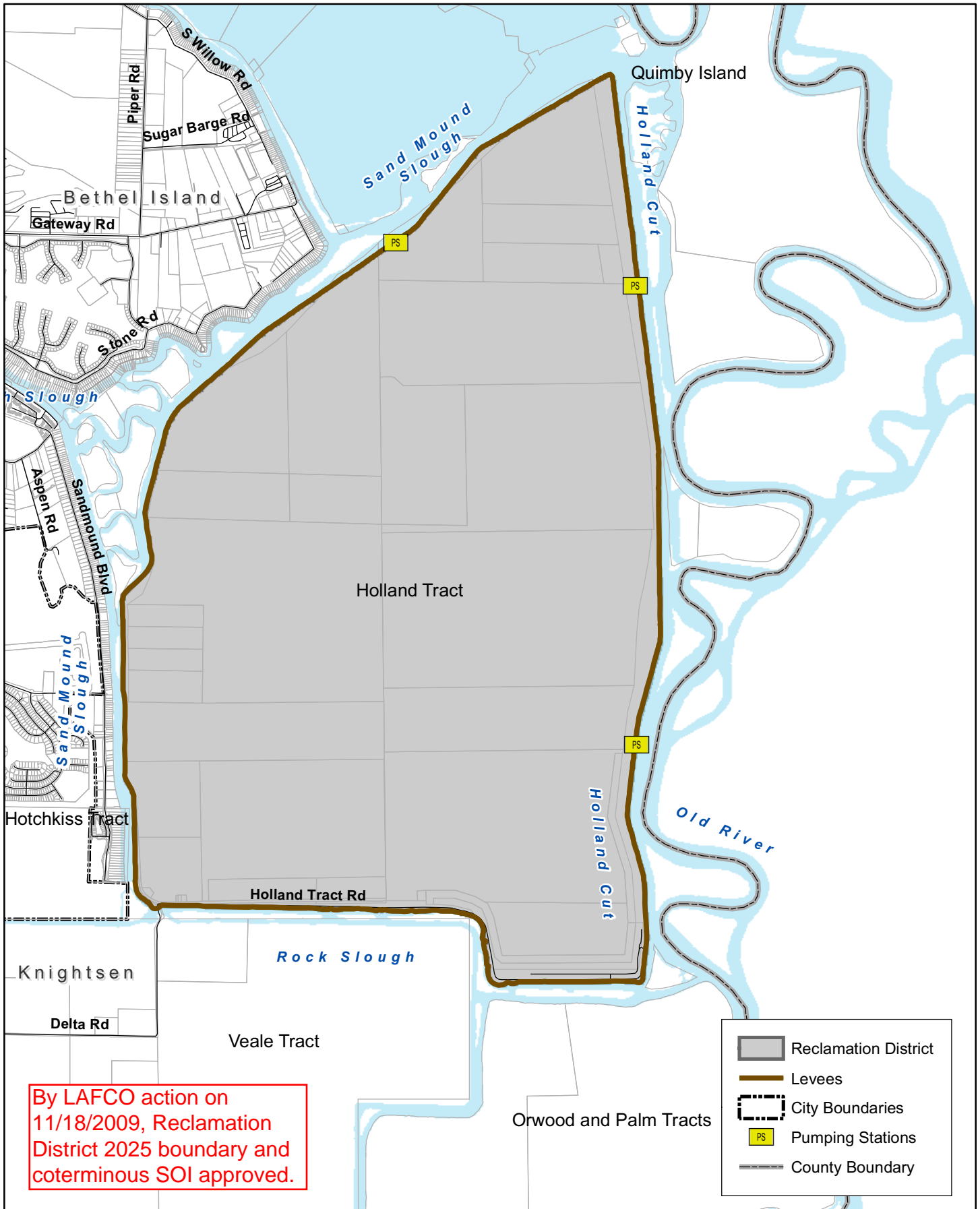
Area Served: Holland Tract

Population Served: 17 landowners; 10 residents (estimate)

Size: Approximately 4,060 acres; 10.9 miles of levees

Services provided: Improve and maintain levees; maintain and operate flood control system including pumps, canals and ditches

# RD 2025 Boundary and Coterminous SOI



By LAFCO action on 11/18/2009, Reclamation District 2025 boundary and coterminous SOI approved.

	Reclamation District
	Levees
	City Boundaries
	Pumping Stations
	County Boundary



**Reclamation District**

**RECLAMATION DISTRICT 2026 (Webb Tract)**  
(California Water Code §50300 et seq.)

Location of office and mailing address            311 East Main Street, Suite 504  
Stockton, CA 95202  
Telephone numbers                                    (209) 943-5551  
FAX number    (209) 943-0251  
Web page  
E-mail address    [ahoslett@sbcglobal.net](mailto:ahoslett@sbcglobal.net)

**BOARD OF DIRECTORS**

Three members elected at large for four-year terms

Meetings:        As needed, dates and times vary

<u>District Board Members</u>	<u>Began serving</u>	<u>Expiration of term</u>
David A. Forkel		2009
Kris Kaiser	2009	2011
John L. Winther		2011

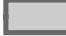


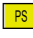


**STAFF**

Al Warren Hoslett	General Manager
Al Warren Hoslett	District Secretary
	Legal Counsel

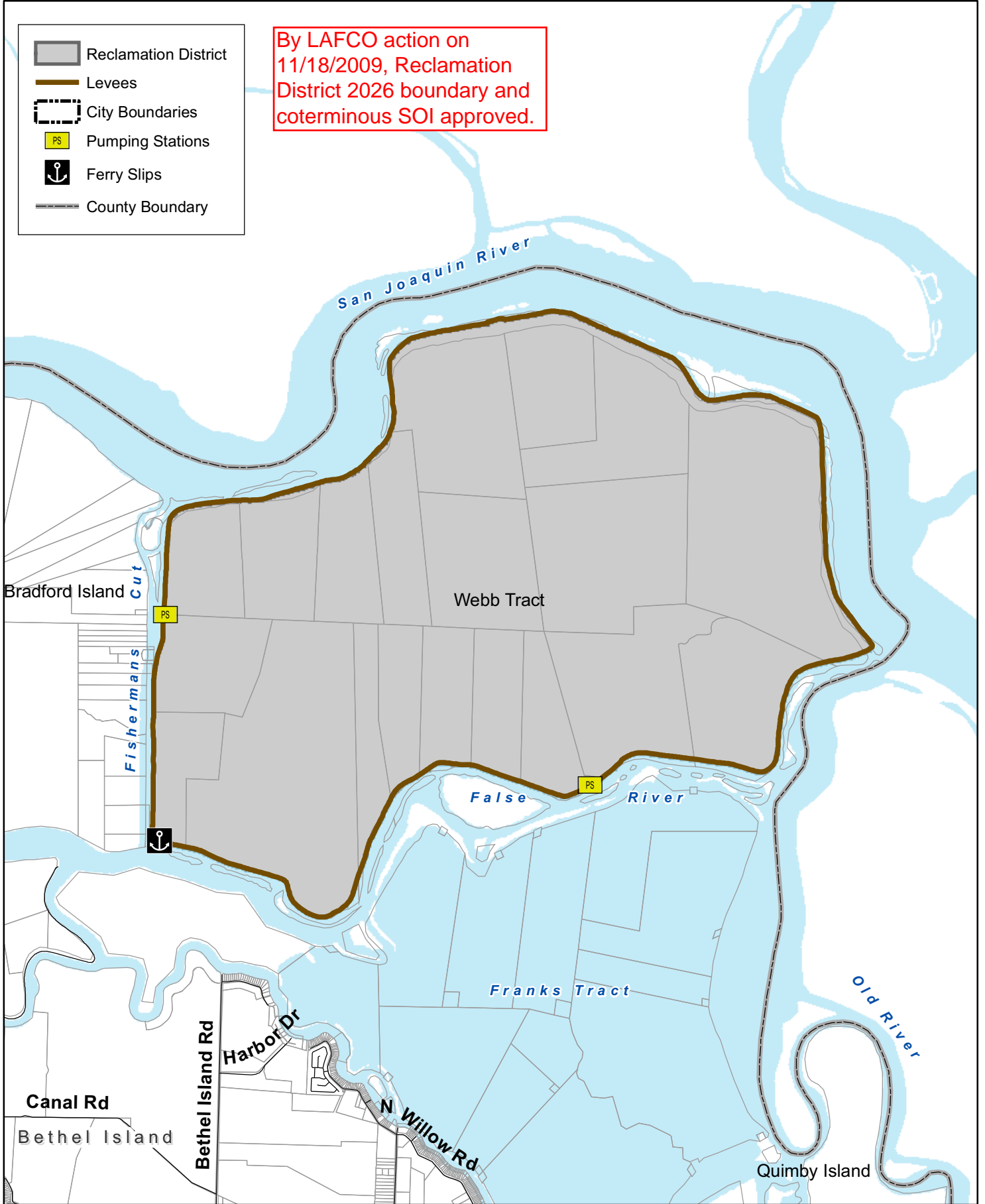
**INFORMATION**

Year Formed:    1918  
Area Served:    Webb Tract  
Population Served:                                    0  
Size:    Approximately 5,500 acres; 12.8 miles of levees  
Services provided:                                    Improve and maintain levees; maintain and operate flood control system, including pumps, canals and ditches

# RD 2026 Boundary and Coterminous SOI

-  Reclamation District
-  Levees
-  City Boundaries
-  Pumping Stations
-  Ferry Slips
-  County Boundary

By LAFCO action on 11/18/2009, Reclamation District 2026 boundary and coterminous SOI approved.



## Reclamation District

### RECLAMATION DISTRICT 2059 (Bradford Island) (California Water Code §50300 et seq.)

Location of office 6329 Bethel Island Road, Suite A  
Bethel Island  
Mailing address P. O. Box 346  
Bethel Island, CA 94511  
Telephone numbers (925) 684-3222  
FAX number (925) 265-2232  
Web page <http://www.bradfordisland.com/>  
E-mail address [angelia\\_bradford@sbcglobal.net](mailto:angelia_bradford@sbcglobal.net)

## BOARD OF TRUSTEES

Five landowners or legal representatives of landowners elected at large for four-year terms

Meetings: First Tuesday of the months of March, June, September and December

<u>District Board Members</u>	<u>Began serving</u>	<u>Expiration of term</u>
Holly Davis	3/27/2008	12/2/2011
Robert Davies	6/30/2008	11/6/2013
Vacant	2001	12/2/2011
Eugene Lewis	2000	12/2/2011
J. Paul Sosnowski	4/11/2006	11/6/2013

## STAFF

Smith Cunningham	District Superintendent
Angelia Tant	District Administrator
	Clerk of the Board
Jim Lucey	Legal Counsel

## INFORMATION

Year Formed: 1921

Area Served: Bradford Island

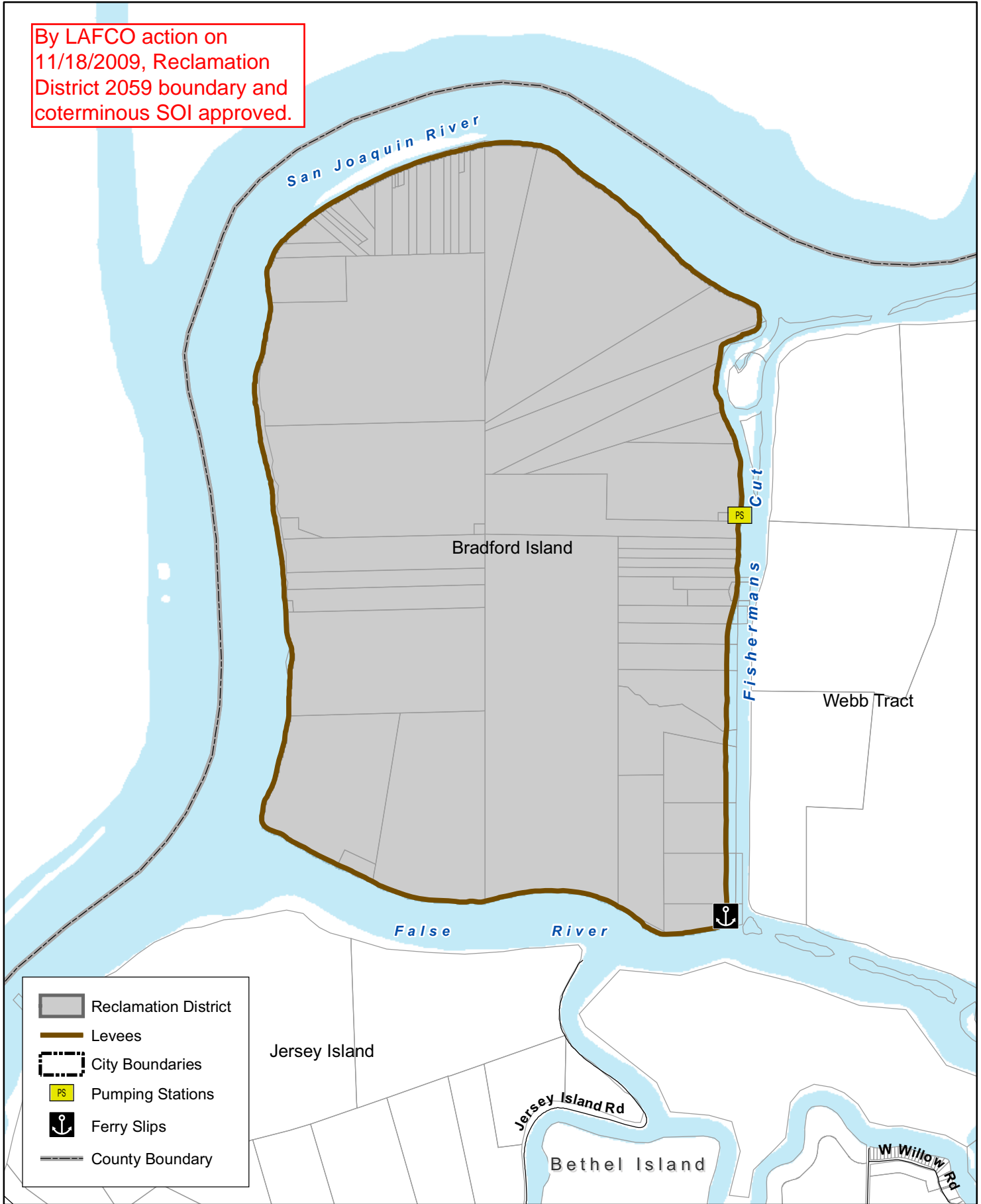
Population Served: Approximately 48

Size: Approximately 2,200 acres; 7.4 miles of levees

Services provided: Improve and maintain levees; maintain and operate flood control system including pumps, canals and ditches; operate ferry service

# RD 2059 Boundary and Coterminous SOI

By LAFCO action on 11/18/2009, Reclamation District 2059 boundary and coterminous SOI approved.



	Reclamation District
	Levees
	City Boundaries
	Pumping Stations
	Ferry Slips
	County Boundary

## Reclamation District

### RECLAMATION DISTRICT 2065 (Veale Tract) (California Water Code §50000 et seq.)

Location of office 235 E Weber Avenue  
Stockton, CA 95202  
Mailing address PO Box 1461  
Stockton, CA 95201-1461  
Telephone numbers (209) 465-5883  
FAX number (209) 465-3956  
Web page  
E-mail address [dantejr@pacbell.net](mailto:dantejr@pacbell.net)

### BOARD OF DIRECTORS

Three landowners or legal representatives of landowners elected at large for four-year terms

Meetings: Currently no fixed meeting schedule; meet on an as-needed basis

<u>District Board Members</u>	<u>Began serving</u>	<u>Expiration of term</u>
Coleman Foley	1995	2013
Thomas E. Baldocchi, Sr.	1996	2011
Thomas E. Baldocchi, Jr.	2005	2013

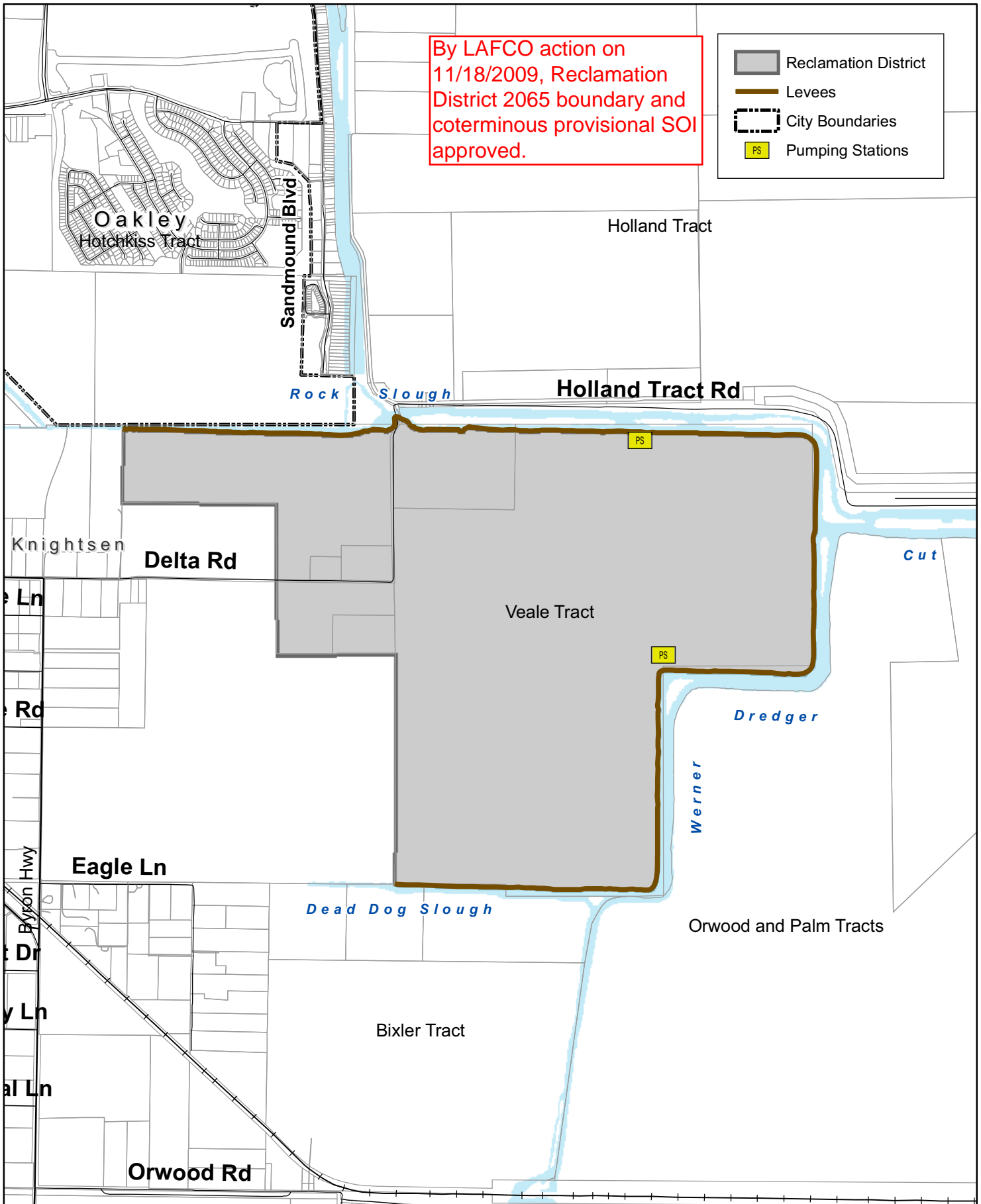
### STAFF

Dante John Nomellini, Jr. General Manager  
Secretary and Counsel

### INFORMATION

Year Formed: 1923  
Area Served: Veale Tract  
Population Served: 14  
Size: Approximately 1,298 acres  
Services provided: Reclamation including levees, flood control and drainage

# RD 2065 Boundary and Coterminous Provisional SOI



By LAFCO action on 11/18/2009, Reclamation District 2065 boundary and coterminous provisional SOI approved.

- Reclamation District
- Levees
- City Boundaries
- PS Pumping Stations



## Reclamation District

### RECLAMATION DISTRICT 2090 (Quimby Island) (California Water Code §50300 et seq.)

Location of office 311 East Main Street, Suite 504  
Stockton, CA 95202

Mailing address  
Telephone numbers (209) 943-5551  
FAX number (209) 943-0251  
Web page  
E-mail address [ahoslett@sbcglobal.net](mailto:ahoslett@sbcglobal.net)

### BOARD OF TRUSTEES

Three landowners or legal representatives of landowners elected at large for four-year terms

Meetings: Called on an as-needed basis

<u>District Board Members</u>	<u>Began serving</u>	<u>Expiration of term</u>
Lawrence J. Watty		2011
Bruce C. Stephens		2011
Rebecca S. DiDomenico		2013

### STAFF

Greg Torlai	General Manager
Al Warren Hoslett	District Secretary
Al Warren Hoslett	Legal Counsel

### INFORMATION

Year Formed: 1918

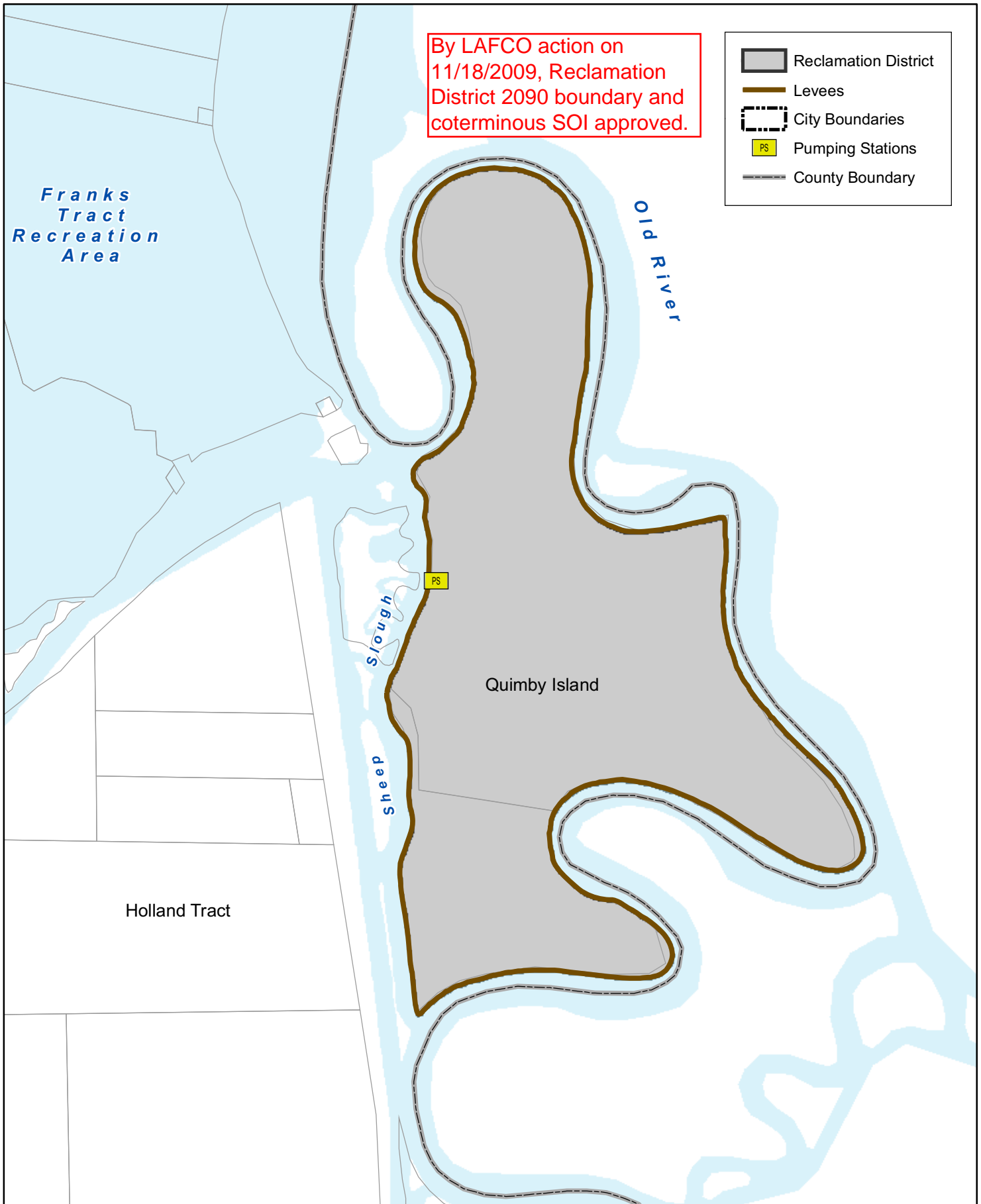
Area Served: Quimby Island

Population Served: 8

Size: Approximately 769 acres; 7.0 miles of levees

Services provided: Improve and maintain levees; maintain and operate flood control system including pumps, canals and ditches

# RD 2090 Boundary and Coterminous SOI



## Reclamation District

RECLAMATION DISTRICT 2117 (Coney Island)  
(California Water Code §50000 et seq.)

Location of office 235 East Weber Avenue  
Stockton CA 95202  
Mailing address PO Box 1461  
Stockton CA 95201-1461  
Telephone numbers (209) 465-5883  
FAX number (209) 465-3956  
Web page  
E-mail address [ngmplcs@pacbell.net](mailto:ngmplcs@pacbell.net)

### BOARD OF DIRECTORS

Three-member board elected at large by landowners for four-year terms. Board member must be a landowner or legal representative of a landowner within the District.

Meetings: As needed; on call

<u>District Board Members</u>	<u>Began serving</u>	<u>Expiration of term</u>
Herbert Speckman	1983	2011
Joyce Speckman	1983	2011
Vacant		

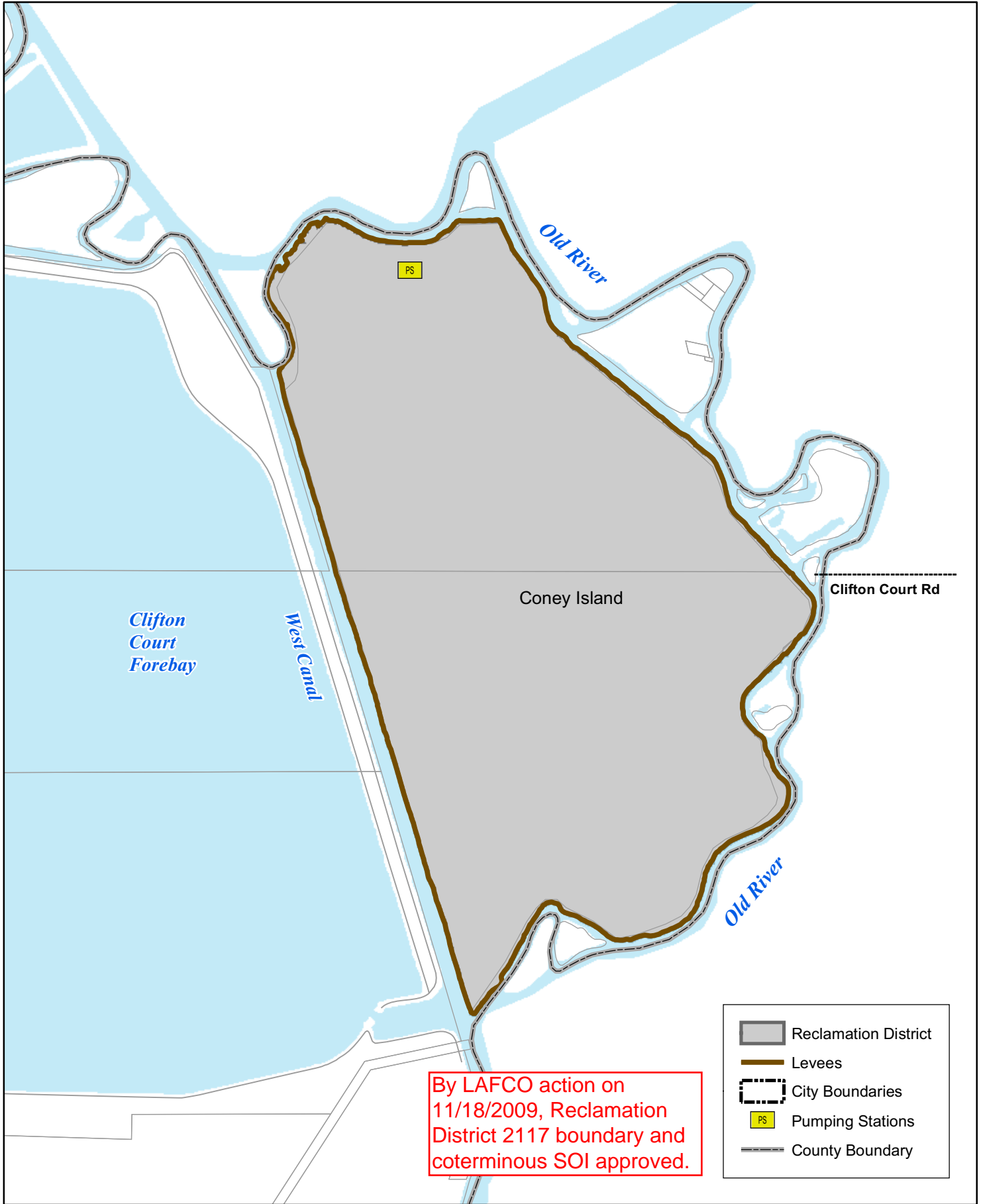
### STAFF

Dante John Nomellini, Sr. General Manager  
Secretary and Counsel




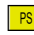

### INFORMATION

Year Formed: 1983  
Area Served: Coney Island  
Population Served: 4  
Size: Approximately 935 acres  
Services provided: Reclamation including levees, flood control and drainage

# RD 2117 Boundary and Coterminous SOI

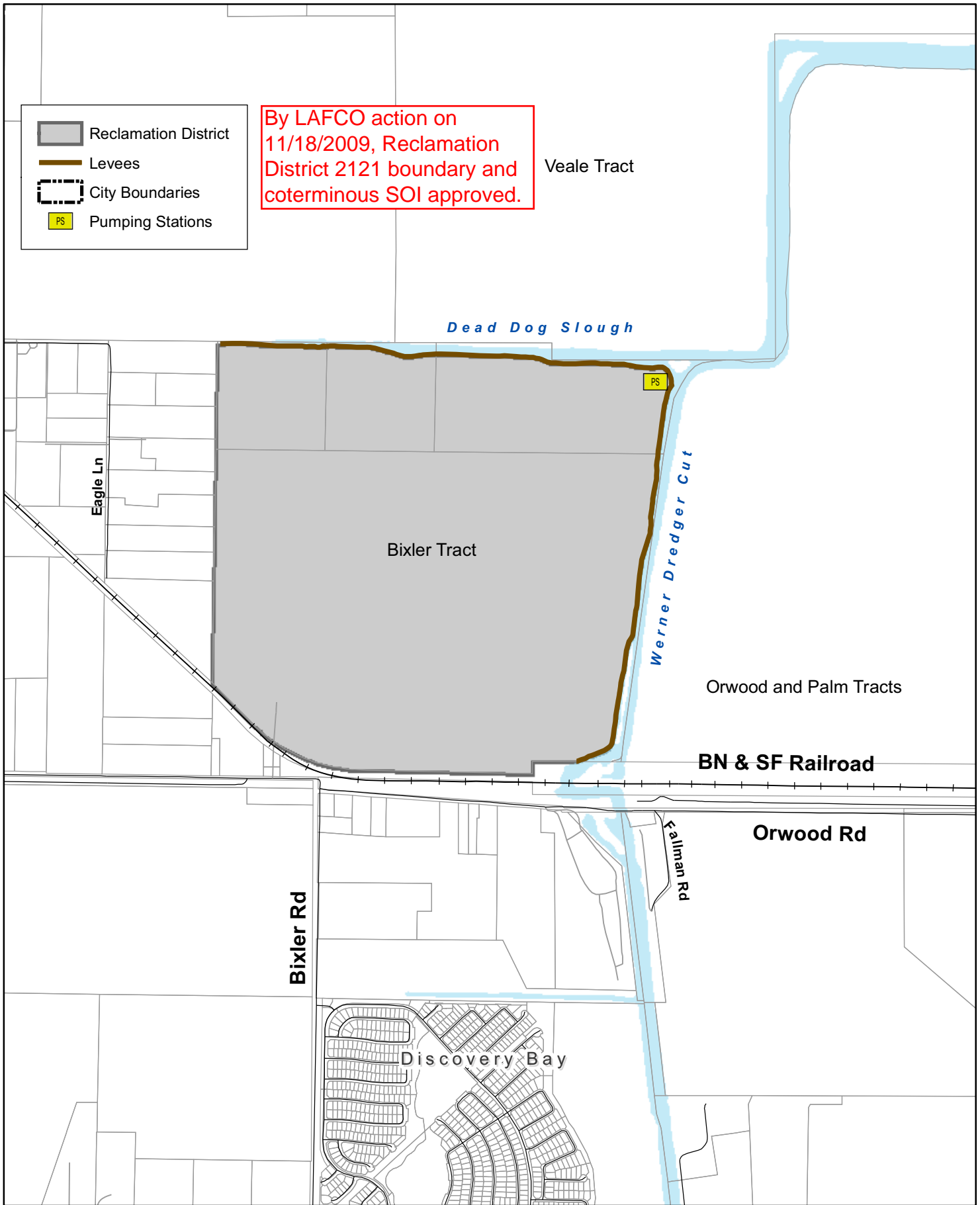


**By LAFCO action on 11/18/2009, Reclamation District 2117 boundary and coterminous SOI approved.**

-  Reclamation District
-  Levees
-  City Boundaries
-  Pumping Stations
-  County Boundary

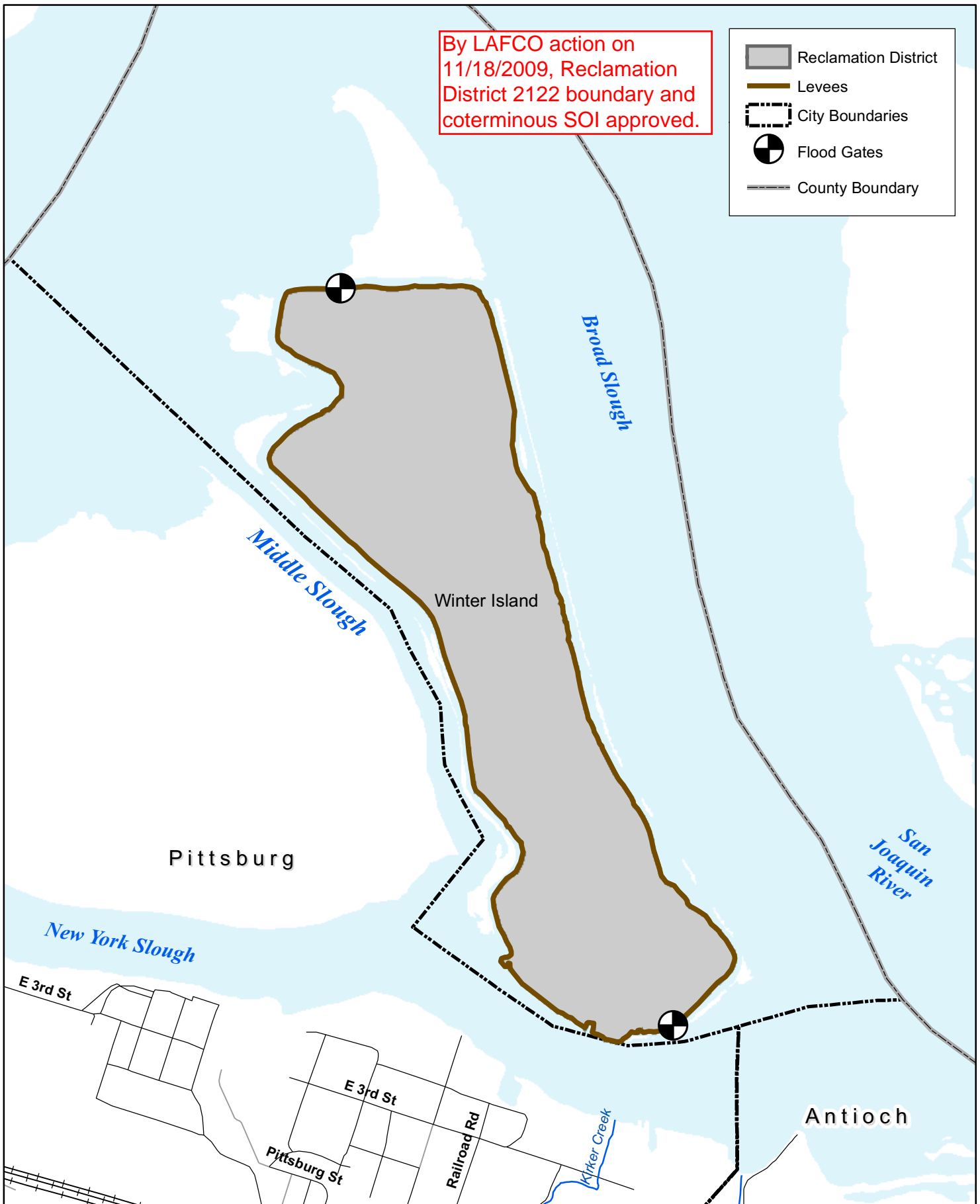








# RD 2122 Boundary and Coterminous SOI



By LAFCO action on 11/18/2009, Reclamation District 2122 boundary and coterminous SOI approved.

- Reclamation District
- Levees
- City Boundaries
- Flood Gates
- County Boundary



**Reclamation District**

**RECLAMATION DISTRICT 2137**  
(California Water Code §50300 et seq.)

Location of office and mailing address            311 East Main Street, #504  
Stockton CA 95205  
Telephone numbers                                (209) 943-5551  
FAX number    (209) 943-0251  
Web page  
E-mail address                                        [ahoslett@sbcglobal.net](mailto:ahoslett@sbcglobal.net)

**BOARD OF TRUSTEES**

Three members elected at large for four-year terms

Meetings:       Meetings are called and held as needed

<u>District Board Members*</u>	<u>Began serving</u>	<u>Expiration of term</u>
James Eckman	2010	2011
Brent Gilbert	2005	2011
Ed Schmit	2007	2013

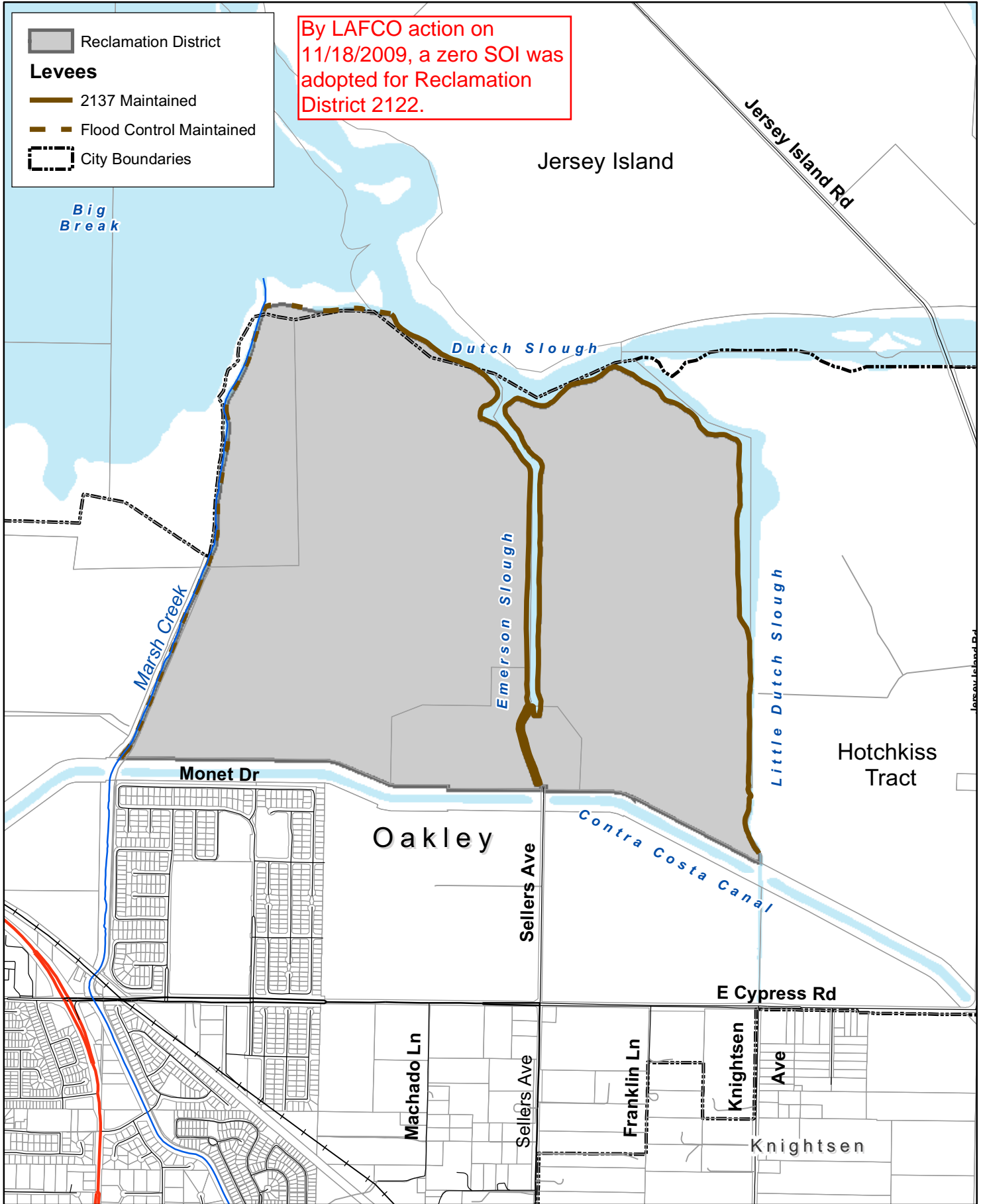
**STAFF**

None	General Manager
Al Warren Hoslett	District Secretary
Al Warren Hoslett	Legal Counsel

**INFORMATION**

Year Formed:                                        2003  
Area Served:  
Population Served:                                2  
Size:    Approximately 785 acres  
Services provided:                                Reclamation including flood control and drainage (south and east of deepwater channel, north of Contra Costa Water District Canal [north of Cypress Road], west of Jersey Island Road)

# RD 2137 Boundary and Zero SOI



By LAFCO action on 11/18/2009, a zero SOI was adopted for Reclamation District 2122.

**Reclamation District**

**Levees**

- 2137 Maintained
- Flood Control Maintained
- City Boundaries

Big Break

Jersey Island

Jersey Island Rd

Dutch Slough

Marsh Creek

Emerson Slough

Little Dutch Slough

Monet Dr

Oakley

Hotchkiss Tract

Contra Costa Canal

Sellers Ave

E Cypress Rd

Machado Ln

Sellers Ave

Franklin Ln

Knightsen Ave

Knightsen

