

# PARKS & RECREATION SERVICES MUNICIPAL SERVICE REVIEW AND SPHERE OF INFLUENCE UPDATES

Contra Costa Local Agency  
Formation Commission

June 9, 2021



Economic & Planning Systems, Inc.  
*The Economics of Land Use*

1330 Broadway, Suite 450 ■ Oakland, CA 94612  
510.841.9190 ■ [www.epsys.com](http://www.epsys.com)

# AGENDA

---

- MSR and SOI Update Objectives
- Sphere of Influence Recommendations
- Draft MSR Feedback/Responses
  - Commissioner Comments (April)
  - Public Comments
- Process and Next Steps



# SPHERE OF INFLUENCE RECOMMENDATIONS

---

Name	Recommendation
Ambrose RPD	Retain existing coterminous SOI
Green Valley RPD	Retain existing coterminous SOI on a provisional basis
Pleasant Hill RPD	Defer, pending subcommittee recommendation
CSA M-16	Retain existing coterminous SOI
CSA M-17	Retain existing coterminous SOI
CSA M-29	Retain existing coterminous SOI
CSA M-30	Retain existing coterminous SOI
CSA R-4	Retain existing coterminous SOI
CSA R-7	Retain existing coterminous SOI
CSA R-9	Adopt a zero SOI
CSA R-10	Adopt a zero SOI

Sources: Economic & Planning Systems, Inc.; Berkson Associates.

## COMMISSIONER FEEDBACK AND REVISIONS

---

- Acknowledge adjacent and nearby open space areas (e.g., regional, state, Federal) that provide recreation opportunities for residents
  - Added additional table detailing nearby park and open space resources that residents may access (table on next slide)
  - Added additional clarifying language in report
- Establish subcommittee to work with PHRPD and residents of Reliez Valley to discuss removal of this area from the PHRPD service boundary
  - Commissioners Blubaugh and Lewis volunteered to sit on the subcommittee

# REGIONAL, STATE, FEDERAL RESOURCES

City	Additional Facilities*
Antioch	Antioch/Oakley Regional Shoreline, Big Break Regional Shoreline, Black Diamond Mines Regional Preserve, Contra Loma Regional Park, Morgan Territory Regional Preserve
Brentwood	Antioch/Oakley Regional Shoreline, Big Break Regional Shoreline, Black Diamond Mines Regional Preserve, Contra Loma Regional Park, Round Valley Regional Preserve, Vasco Caves Regional Preserve
Clayton	N / A
Concord	Concord Hills Regional Park, Diablo Foothills Regional Park, Iron Horse Regional Trail
Danville	Iron Horse Regional Trail, Las Trampas Regional Wilderness, Diablo Foothills, Sycamore Valley Regional Open Space Preserve
El Cerrito	Miller/Knox Regional Shoreline, Point Isabel Regional Shoreline, Kennedy Grove Regional Recreation Area, Wildcat Canyon Regional Park
Hercules	Crockett Hills Regional Park
Lafayette	Briones Regional Park, Lafayette-Moraga Regional Trail, Las Trampas Regional Wilderness, Lafayette Reservoir
Martinez	Briones Regional Park, Carquinez Strait Regional Shoreline, Radke Martinez Regional Shoreline, Waterbird Regional Preserve, John Muir National Historic Site
Moraga	N / A
Oakley	Antioch/Oakley Regional Shoreline, Big Break Regional Shoreline, Contra Loma Regional Park
Orinda	Kennedy Grove Regional Recreation Area, Reinhardt Regional Park, Sibley Volcanic Regional Preserve, Tilden Regional Park - Botanic Garden
Pinole	Point Pinole Regional Shoreline, Sobrante Ridge Botanic Regional Preserve
Pittsburg	Black Diamond Mines Regional Preserve, Brooks Island Regional Preserve, Contra Loma Regional Park
Pleasant Hill	Briones Regional Park
Richmond	Brooks Island Regional Preserve, Miller-Knox Regional Shoreline, Point Isabel Regional Shoreline, Point Pinole Regional Shoreline, Sobrante Ridge Botanic Regional Preserve, Wildcat Canyon Regional Park
San Pablo	Miller-Knox Regional Shoreline, Point Pinole Regional Shoreline
San Ramon	Bishop Ranch Regional Open Space, Iron Horse Regional Trail, Las Trampas Regional Wilderness, Little Hills Picnic Ranch
Walnut Creek	Castle Rock Regional Recreation Area, Diablo Foothills Regional Park, Las Trampas Regional Wilderness

\*In addition to the facilities listed here, the East Bay Municipal Utility District operates an extensive trail system along the western portion of the County.

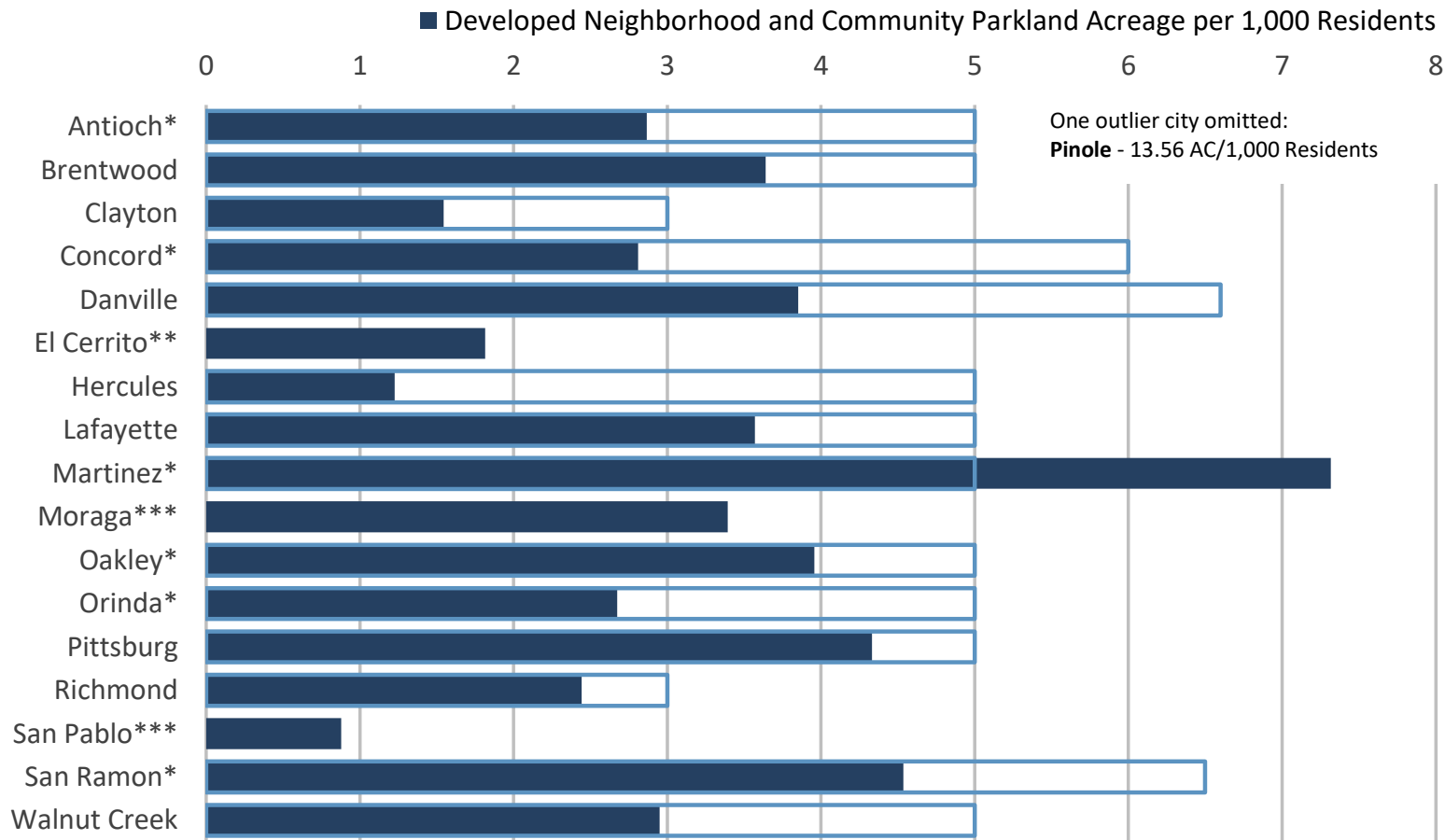
Sources: East Bay Regional Park District, East Bay Municipal Utility District, Contra Costa County.

# PUBLIC COMMENTS RECEIVED

---

Name	Agency/Role	Form
Roger Chelemedos	Private Citizen, Reliez Valley	Email to Lou Ann, dated 2/08/21 Email/letter to Lou Ann, dated 06/07/21
Dave Barclay	Chair, Alamo MAC	Letter to Lou Ann
Michelle Lacy	General Manager, PHRPD	Letter to Lou Ann
Sharon Burke	Private Citizen	Email to Lou Ann
Chris Jones	Recreation Director, City of El Cerrito	Email to Lou Ann and Consultants, dated 4/28/21 Email to Lou Ann and Consultants, dated 5/21/21
Debra Mason	Private Citizen	Letter to Lou Ann
Unknown	Private Citizen	Phone call to Lou Ann

# CITIES: PARK ACREAGE LOS



**NOTE:** Unless specifically noted, this figure compares developed neighborhood and community parkland acreage to each city's adopted level of service (LOS) standard. Some cities may establish their LOS standards using alternative definitions of park acreage.

\*Jurisdictions include school district park acreage within their park inventories.

\*\*El Cerrito has an adopted LOS standard that includes open space acreage, which this figure omits. Including open space acreage, the City of El Cerrito reports it is meeting its LOS standard. The City's adopted LOS is not shown in this figure as it does not allow for comparison across the jurisdictions.

\*\*\*Jurisdictions do not currently have adopted Level of Service standards.

Source: Economic & Planning Systems



## PROCESS AND NEXT STEPS

---

- April 1 – Public Review Draft MSR report released
- April 14 – LAFCO Commission holds 1<sup>st</sup> public hearing
- April 30 – Public comment period closed
- Consultants revised MSR/SOI Update to reflect comments received by Commissioners, local agencies, and the public
- May 21 – Final Draft MSR released
- June 9 – Commission holds 2<sup>nd</sup> public hearing
  - Accept the Final MSR (subject to minor edits/corrections)
  - Make required MSR and SOI determinations
  - Update the SOIs for two of the Recreation & Park Districts (GVRPD and APRD) and eight CSAs, and defer the PHSRD SOI update until the subcommittee has a recommendation
- By June 30 – Consultants prepare Final MSR and SOI Update

# EPS

---

REAL ESTATE ECONOMICS

PUBLIC FINANCE

LAND USE & TRANSPORTATION

ECONOMIC DEVELOPMENT &  
REVITALIZATION

FISCAL & ECONOMIC IMPACT ANALYSIS

HOUSING POLICY

PUBLIC PRIVATE PARTNERSHIPS (P3)

PARKS & OPEN SPACE ECONOMICS



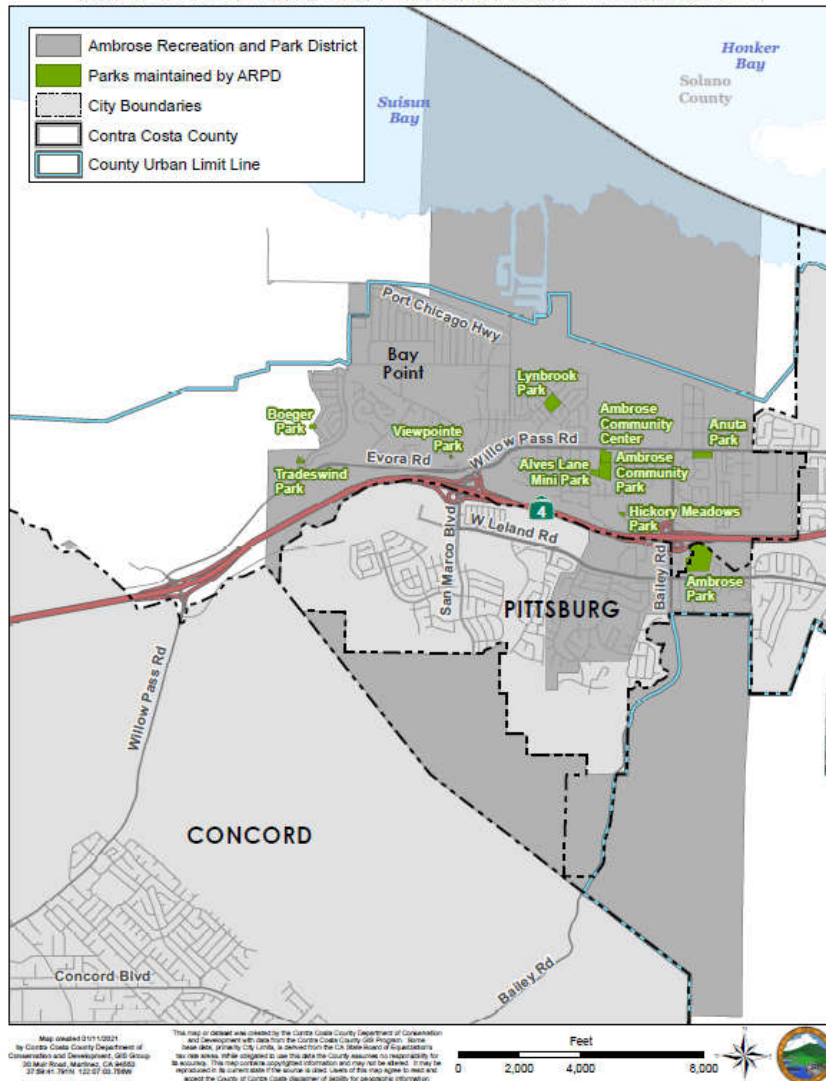


## REFERENCE SLIDES

---

# AMBROSE RPD

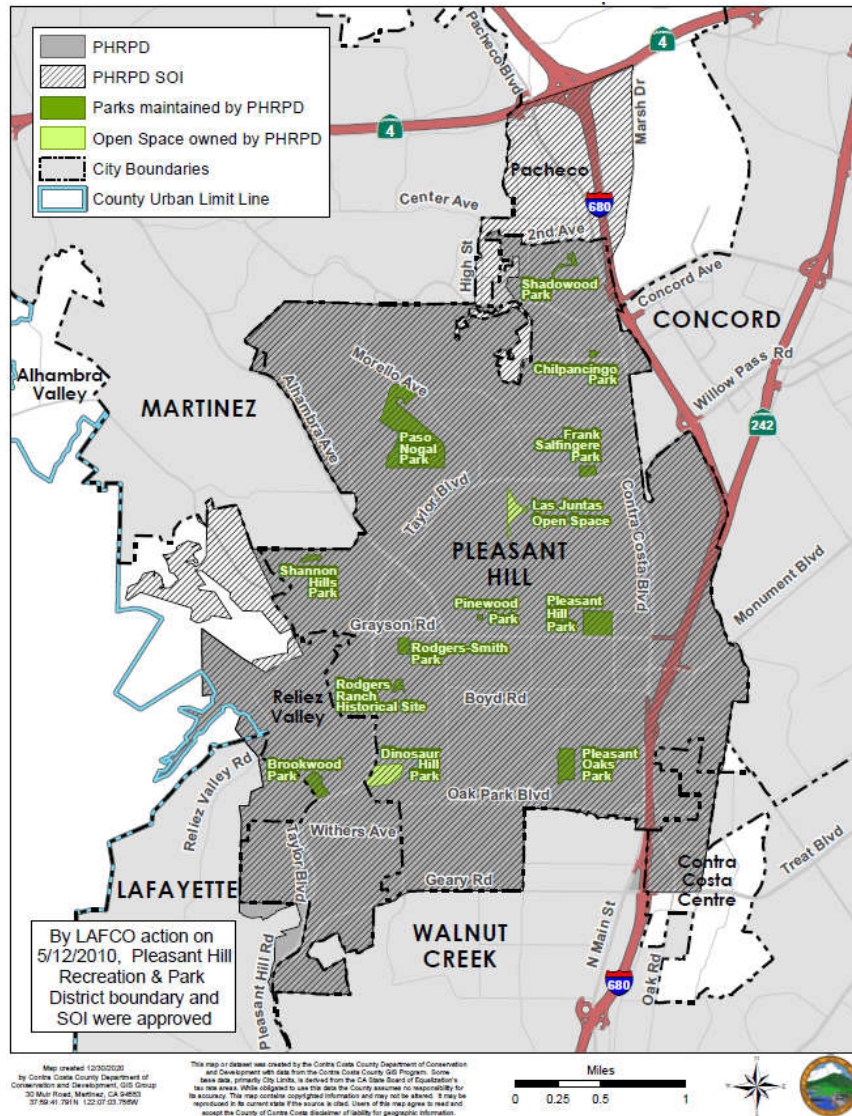
Ambrose Recreation and Park District and Coterminus SOI





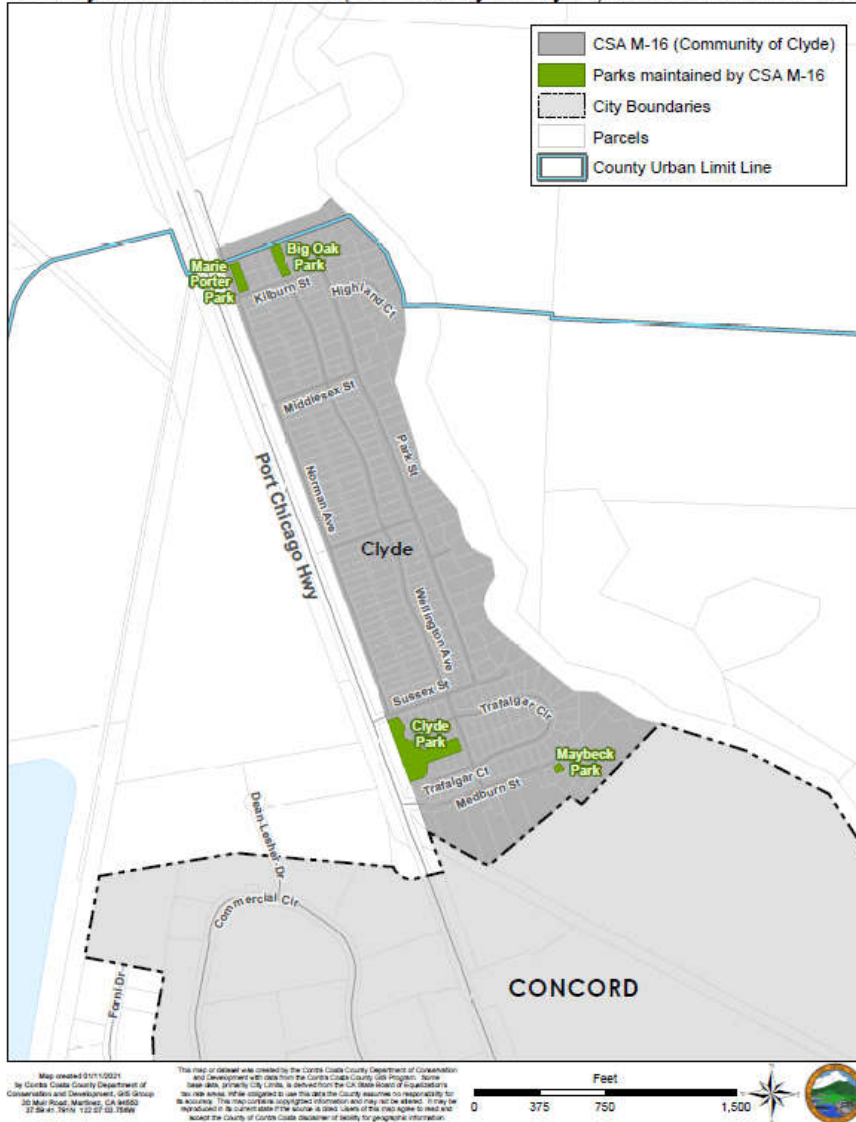


# PLEASANT HILL RPD



# CSA M-16

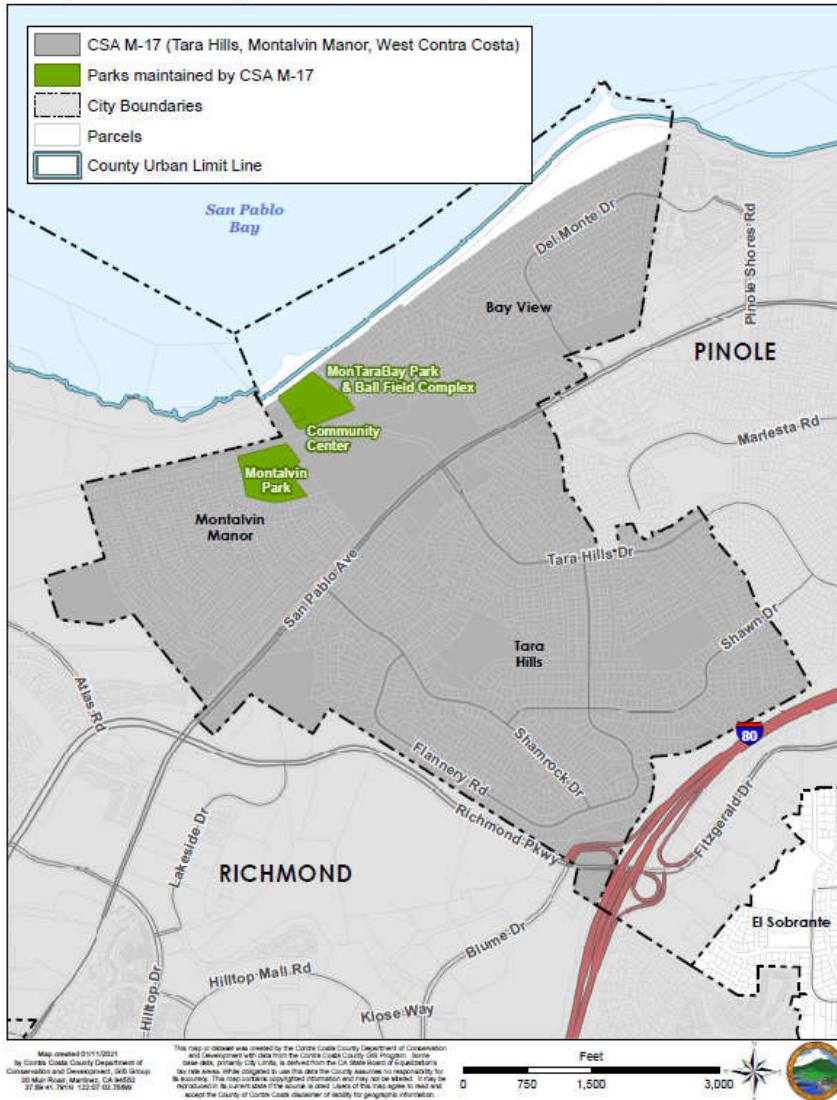
County Service Area M-16 (Community of Clyde) and Coterminus SOI





# CSA M-17

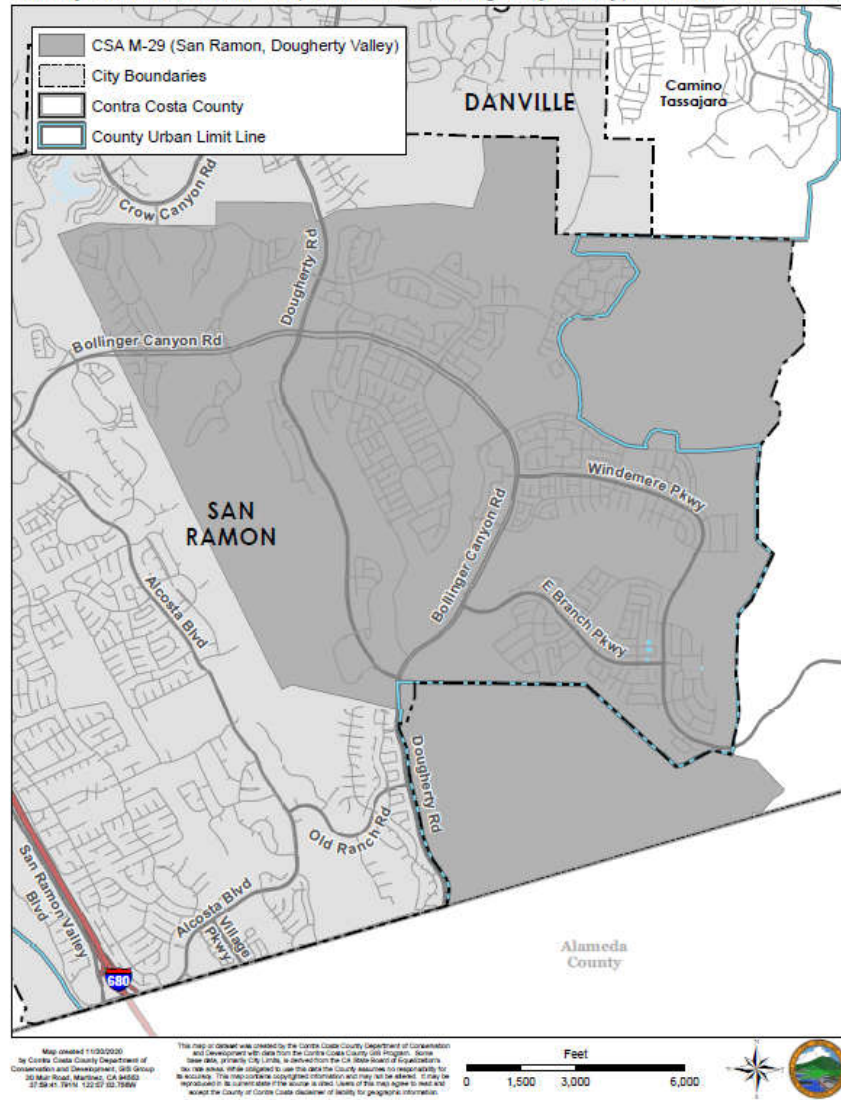
County Service Area M-17 (Tara Hills, Montalvin Manor, West Contra Costa) and Cotermineus SOI





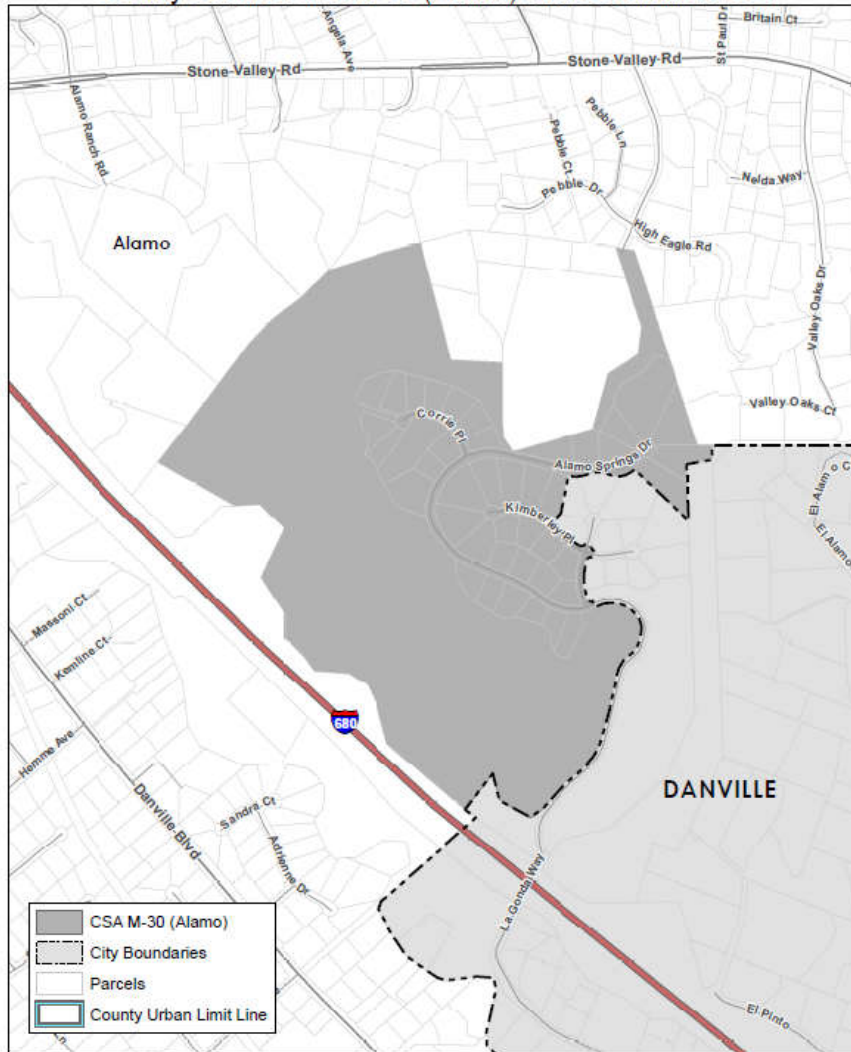
# CSA M-29

County Service Area M-29 (San Ramon, Dougherty Valley) and Coterminus SOI



# CSA M-30

County Service Area M-30 (Alamo) and Coterminus SOI

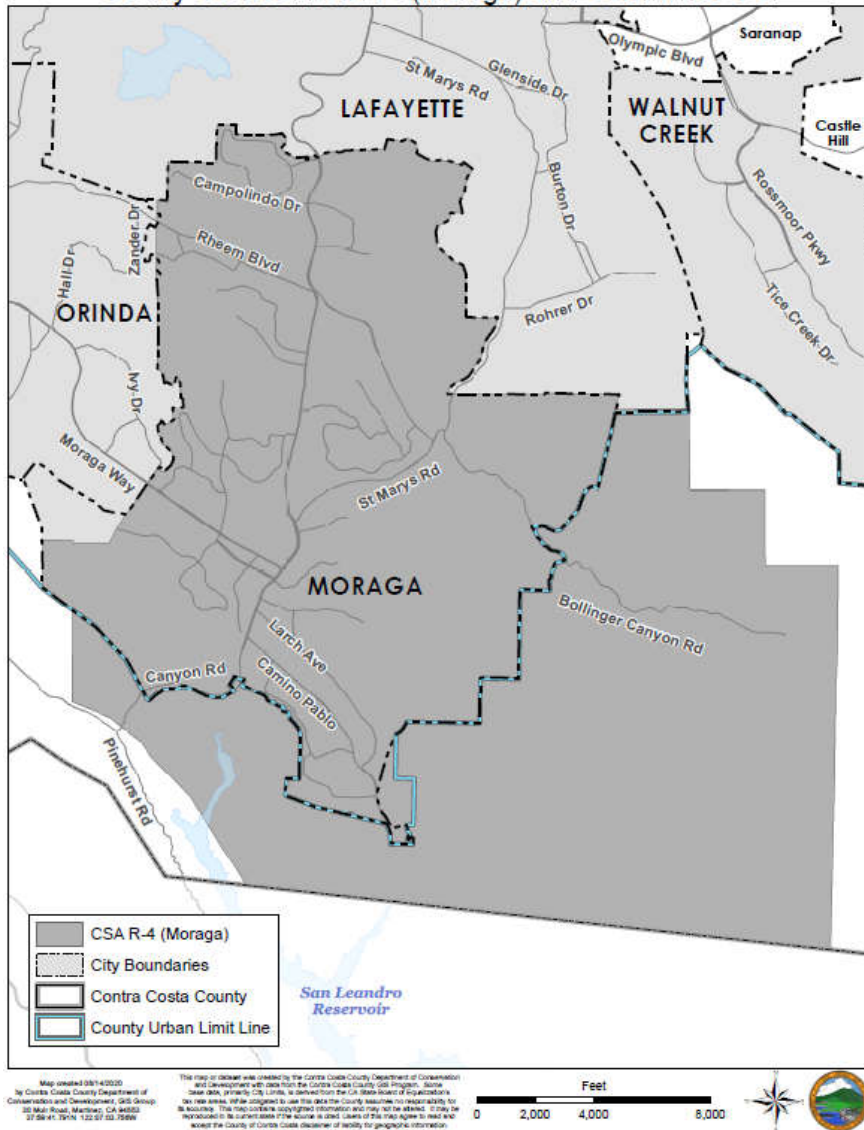


Map created 03/14/2020  
by Contra Costa County Department of  
Conservation and Development, GIS Group  
30 Main Road, Martinez, CA 94553  
27.59 47.79 122.07 53.1989

This map or dataset was created by the Contra Costa County Department of Conservation  
and Development with data from the Contra Costa County GIS Program. Some  
base data, primarily city limits, is derived from the California Department of  
Transportation's Statewide Information System (SIS). The County assumes no responsibility for  
its accuracy. This map contains copyrighted information and may not be altered. It may be  
reproduced in its current state if the source is cited. Users of this map agree to hold the  
County of Contra Costa harmless of liability for any copyright infringement.

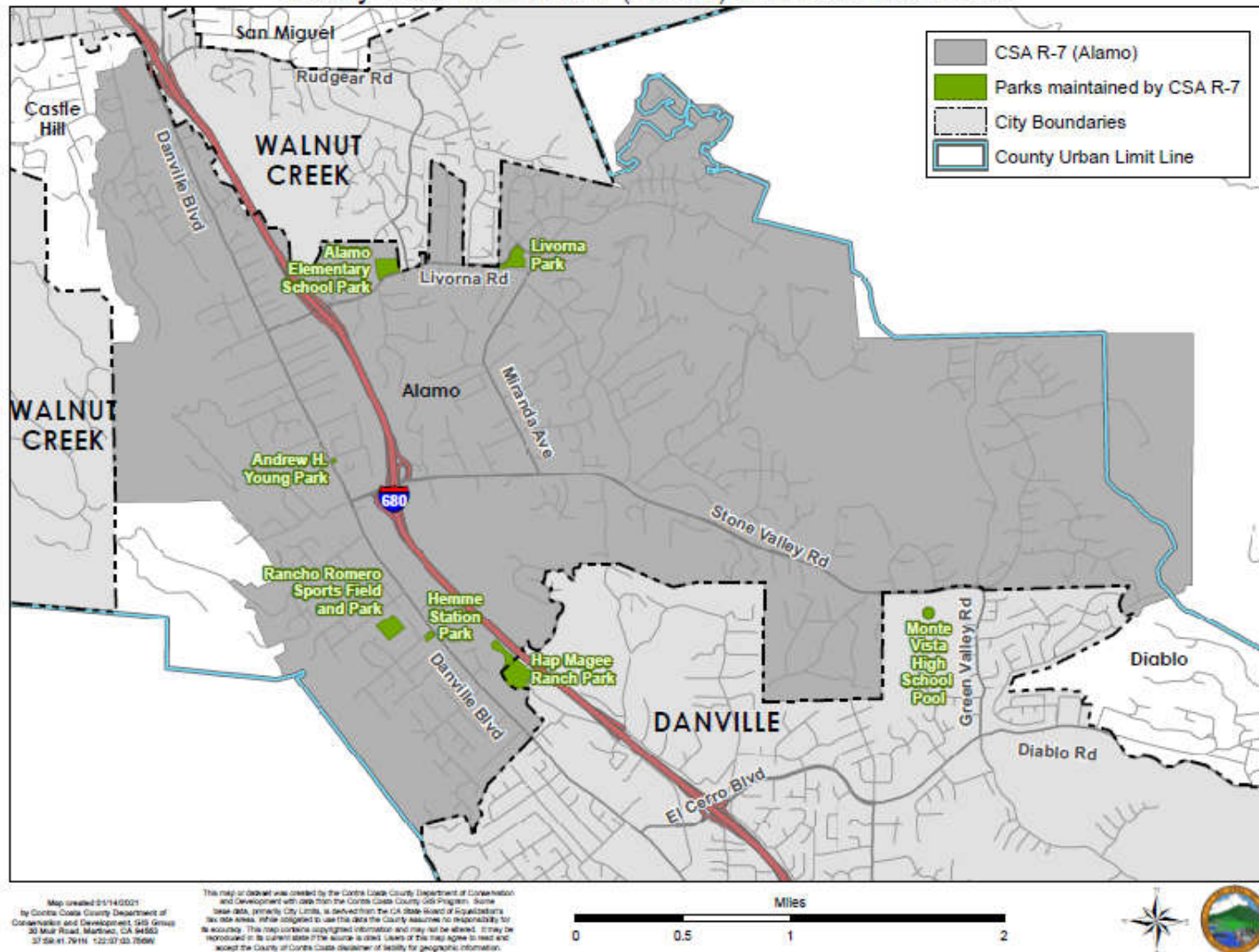
# CSA R-4

County Service Area R-4 (Moraga) and Coterminus SOI



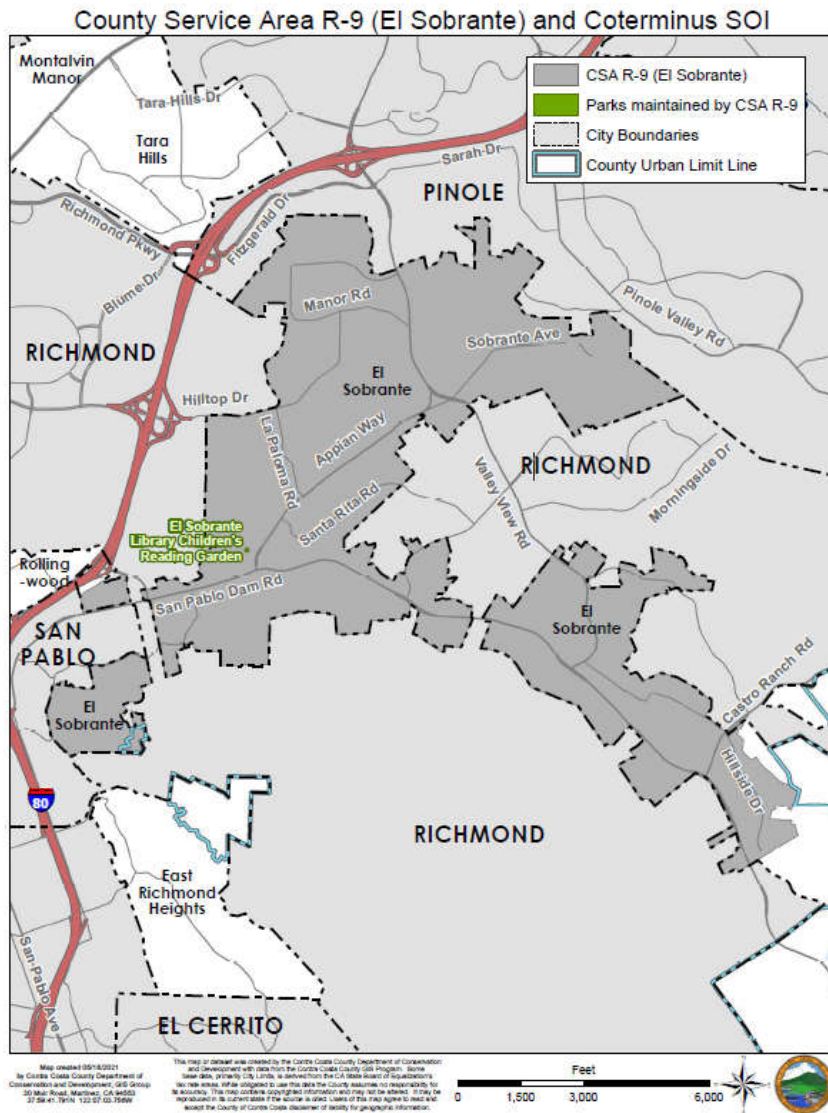
# CSA R-7

County Service Area R-7 (Alamo) and Coterminus SOI





# CSA R-9



# CSA R-10

